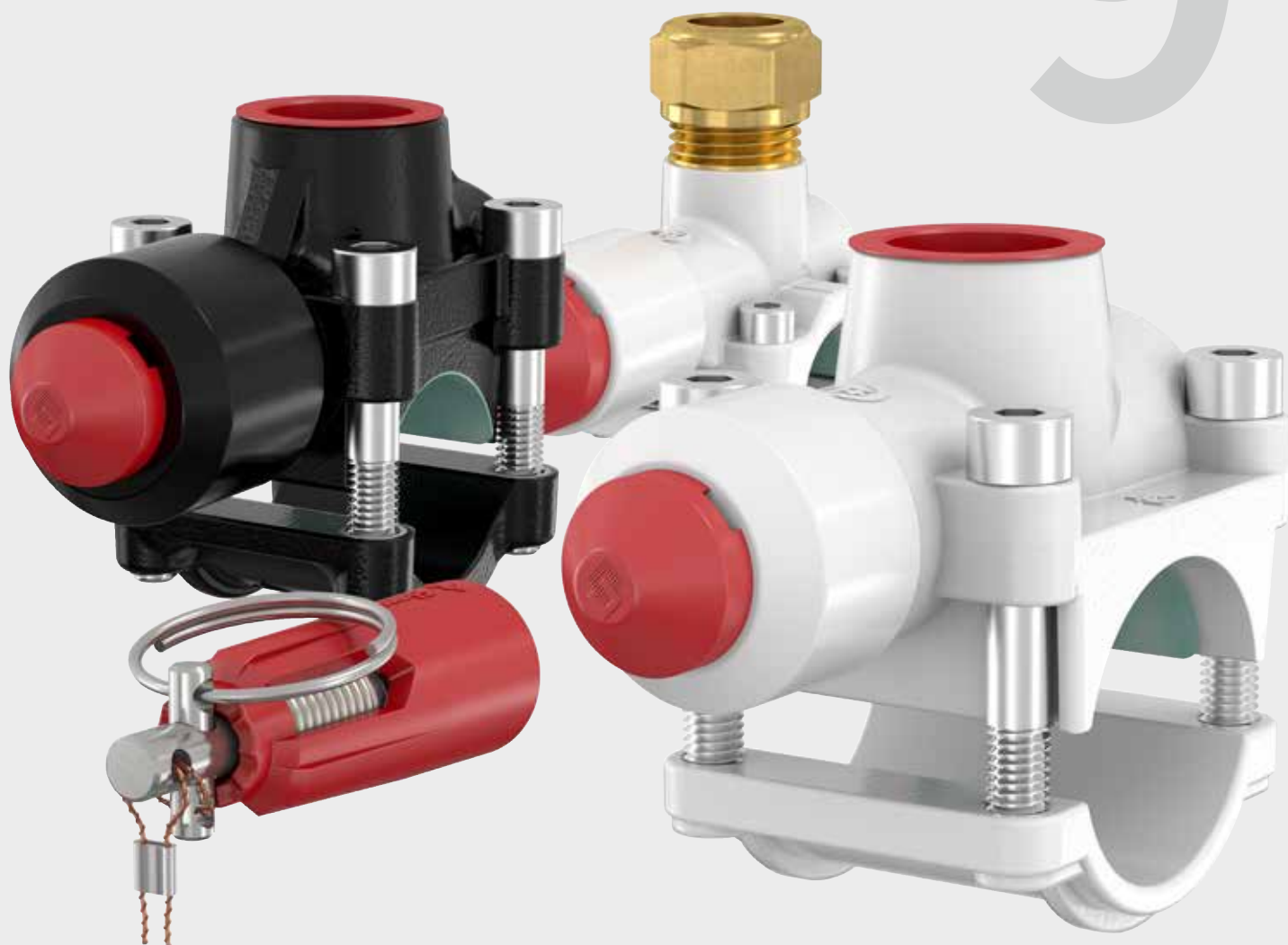


## T-plus

9



9



*The T-plus is an ideal product for the expansion, conversion or overhaul of an existing system. No longer is it necessary to isolate, drain, de-pressurise or freeze a pipe when an extra branch is required. This prevents costly down time. The new branch can be fitted in seconds, even in hard-to-reach places. Time is money and installers will immediately appreciate the difference that T-plus makes. There are two models in the Flamco range (steel and copper) which can be used with a wide range of tubes and pipes for water, air and other non-flammable fluids.*

T-plus Cast Iron



P. 266

T-plus Brass



P. 267

## T-PLUS

The T-plus is specially designed to create perfect branches quickly and easily, whilst the system remains in operation.

The design of the T-plus is unique and responds precisely to the requirements of installers and their customers. The combination of a plunger, striking pin and a trigger sets the new standard in the creation of branches for systems in operation.

The new branching mechanism (the trigger) means perfect installation everywhere, everytime. Once the pin is removed, the charge ignites and the striking pin shoots straight forward. This makes a clean cut in the pipe creating the branch. This makes it possible to make branches even where there is little available space. There is no need to use a hammer any more.

### Main advantages

- Saves installation time and costs.
- Create branches while the system is still in operation.
- Draining is not necessary, so no air and dirt can get into the system.
- A perfect branch every time due to the trigger.
- Easy to create a branch, even where space is restricted.
- Optimum pipe seal.
- Anti-corrosion coating.
- Single use (one shot) trigger mechanism. The trigger is included with the T-plus.

### Areas of application

- Central heating and cooling installations.
- Potable installations.
- Solar installations.
- Fire protection systems.
- Industrial applications such as compressed air systems.

There are two types of T-plus available: a cast-iron version for thick-walled steel pipes and a brass version for copper pipes, thin-walled steel tubes, central heating pipes and stainless-steel pipes.

### Installing the T-plus

The T-plus makes things easy for installers. We developed a new mechanism for making the perfect branch in just four steps. No matter how small the available space is, installers can always deliver optimum quality with the T-plus. Creating a branch has never been easier.

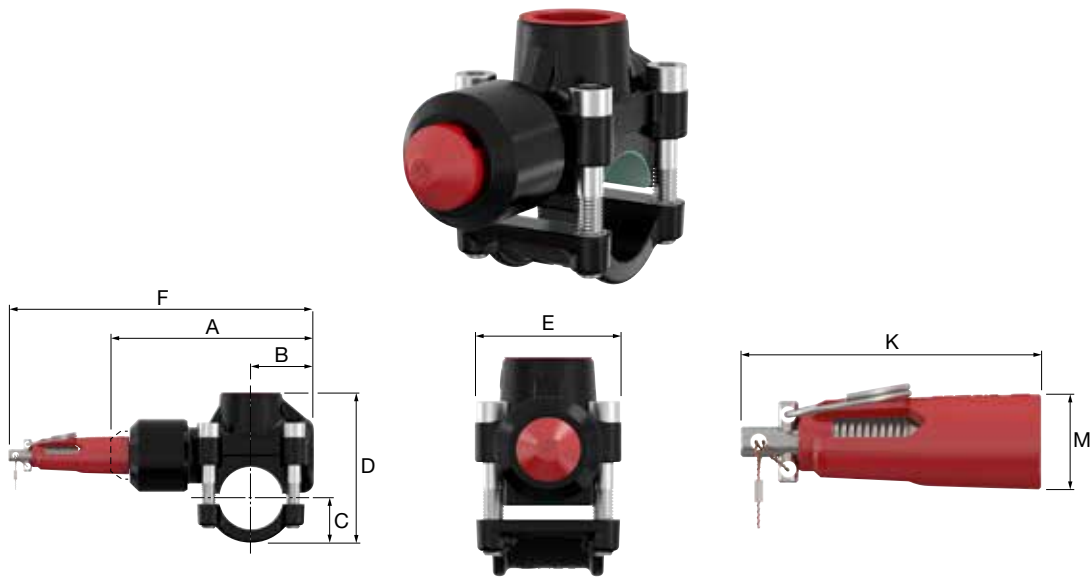
- (1) Position the ring in the most comfortable direction for you to pull.
- (2) Cut through the seal.
- (3) Pull the pin.




## T-plus Cast Iron

For steel pipes (St33, St34, St35, St37) from 1/2" to 3":

- Threaded pipes: NEN 3257 C Heavy, DIN 2441, BS 1387 Heavy (or lighter)/ISO 9329-1.
- Seamless steel pipes: DIN 2448/1629 Bl.3, St 35 / ISO 9330-1.
- Welded steel pipes: DIN 2458/1626 Bl.2, St 35.
- Material numbers:  
1.0035 (St33)  
1.0034, 10305 (St34)  
1.0308, 10345 (St35)  
1.0036, 1.0037, 1.0038, 1.0039, 1.0255, 1.0254 (St37).
- Maximum working pressure: 25 bar.
- Maximum permissible temperature: 120 °C.
- Simple preparatory installation with click-in nuts (on models from 1 1/2").



Type	Ø Pipe		Branch connection	Permissible wall thickness		Torque [Nm]		Order Code
	Nom.	Ext. [mm]		Min. [mm]	Max. [mm]			
T-plus DN 15 x Rp 1/2	1/2"	21.3	Rp 1/2"	2.0	3.25	10	1	90615
T-plus DN 20 x Rp 1/2	3/4"	26.9	Rp 1/2"	2.0	3.25	10	1	90620
T-plus DN 25 x Rp 3/4	1"	33.7	Rp 3/4"	2.0	4.05	16	1	90626
T-plus DN 32 x Rp 1	1 1/4"	42.4	Rp 1"	2.0	4.05	16	1	90632
T-plus DN 40 x Rp 1 1/4	1 1/2"	48.3	Rp 1 1/4"	2.3	4.05	30	1	90640
T-plus DN 50 x Rp 1 1/4	2"	60.3	Rp 1 1/4"	2.3	4.50	30	1	90650
T-plus DN 65 x Rp 1 1/4	2 1/2"	76.1	Rp 1 1/4"	2.6	4.50	30	1	90665
T-plus DN 80 x Rp 1 1/4	3"	88.9	Rp 1 1/4"	2.9	5.00	30	1	90680



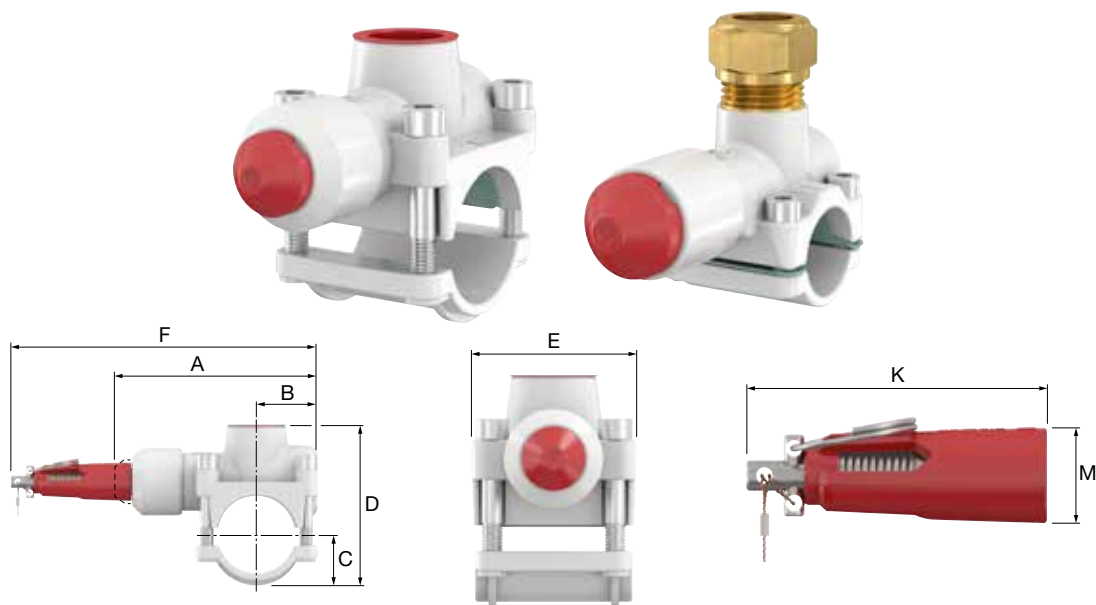
## T-Plus Cast Iron - Dimensions

Type	Dimensions							
	A [mm]	B [mm]	C [mm]	D [mm]	E [mm]	F + 13 [mm]	K [mm]	M [mm]
T-plus DN 15 x Rp 1/2	100	28	19	67	47	166	66	21
T-plus DN 20 x Rp 1/2	113	34	21	77	50	179	66	21
T-plus DN 25 x Rp 3/4	115	35	25	83	56	181	66	21
T-plus DN 32 x Rp 1	130	38	29	102	69	196	66	21
T-plus DN 40 x Rp 1 1/4	165	55	35	123	83	231	66	21
T-plus DN 50 x Rp 1 1/4	167	55	43	136	83	233	66	21
T-plus DN 65 x Rp 1 1/4	190	66	52	153	83	256	66	21
T-plus DN 80 x Rp 1 1/4	190	66	58	168	83	256	66	21

## T-plus Brass

For thin-walled steel pipes (St33, St34, St35, St37), copper pipes (R290, R250) and SST pipes (1.4401, 1.4521):

- Thin-walled steel pipes according to NEN 1982, EN 10305 and DIN 2391.  
Material numbers: 1.0033 (St33), 1.0031, 1.0034 (St34), 1.0214, 1.0308 (St35), 1.0220, 1.0225, 1.0237 and 1.0261.
- Hard (R290) / semi-hard (R250) copper pipes according to EN 1057.
- Stainless steel pipes according to NEN 1982, EN 10312 and DIN 2391 made of AISI 316 (1.4401) and AISI 444 (1.4521).
- Maximum working pressure: 16 bar.
- Maximum permissible temperature: 120 °C.



Type	Ø Pipe ext. dia. [mm]	Branch con- nection	Suitable for			Max. permissible wall thickness			Torque [Nm]		Order Code
			Thin- walled steel	Copper	SST	Thin- walled steel [mm]	Copper [mm]	SST [mm]			
<b>T-plus 14 x G 1/2 M</b>	14	G 1/2" M	-	✓	-	-	1.25	-	6	1	90514
<b>T-plus 15 x G 1/2 M</b>	15	G 1/2" M	✓	✓	✓	1.25	1.25	1.00	6	1	90515
<b>T-plus 16 x G 1/2 M</b>	16	G 1/2" M	-	✓	-	-	1.25	-	6	1	90516
<b>T-plus 18 x G 1/2 M</b>	18	G 1/2" M	✓	✓	✓	1.25	1.25	1.00	6	1	90518
<b>T-plus 22 x G 1/2 M *</b>	22	G 1/2" M	✓	✓	✓	1.50	1.25	1.25	6	1	90522
<b>T-plus 28 x Rp 3/4</b>	28	Rp 3/4"	✓	✓	✓	1.50	1.50	1.25	10	1	90528
<b>T-plus 35 x Rp 3/4</b>	35	Rp 3/4"	✓	✓	✓	1.50	1.50	1.50	10	1	90535
<b>T-plus 42 x Rp 3/4</b>	42	Rp 3/4"	✓	✓	-	1.50	1.50	-	10	1	90542

\* Complete with coupling 15 mm compr. fittings.



## T-plus Brass - Dimensions

Type	Dimensions							
	A [mm]	B [mm]	C [mm]	D [mm]	E [mm]	F + 13 [mm]	K [mm]	M [mm]
<b>T-plus 14 x G 1/2 M</b>	75	17	13	48	35	141	66	21
<b>T-plus 15 x G 1/2 M</b>	75	17	13	51	35	141	66	21
<b>T-plus 16 x G 1/2 M</b>	75	17	12	46	35	141	66	21
<b>T-plus 18 x G 1/2 M</b>	88	24	14	51	40	154	66	21
<b>T-plus 22 x G 1/2 M</b>	88	24	15	58	40	154	66	21
<b>T-plus 28 x Rp 3/4</b>	105	29	22	76	57	171	66	21
<b>T-plus 35 x Rp 3/4</b>	108	30	25	82	56	174	66	21
<b>T-plus 42 x Rp 3/4</b>	115	35	29	89	63	181	66	21

