



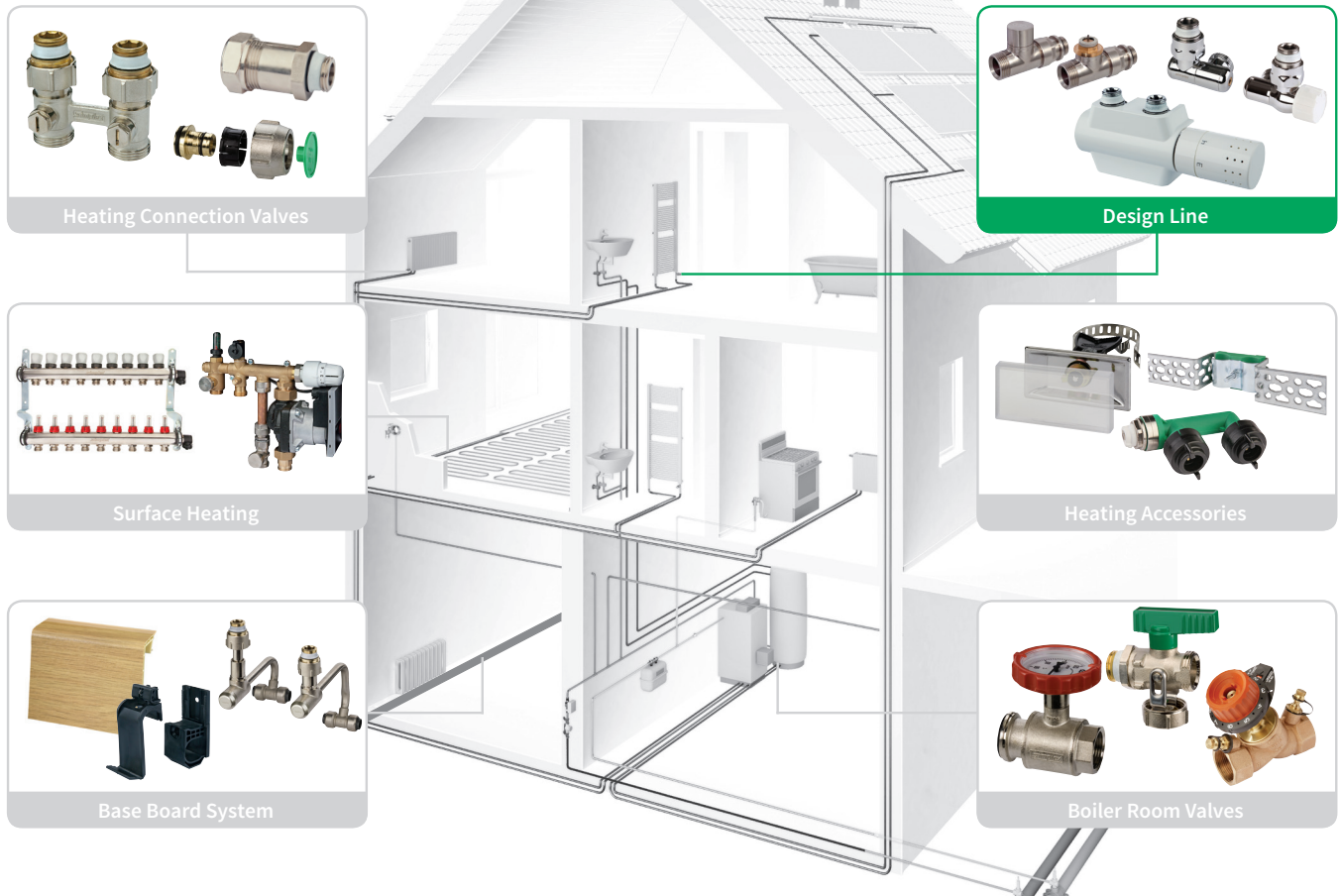
Design Line

Functionality meets design

- For stylish living
- Modern, minimalist design
- Maximum comfort and flexibility

SIMPLEX
DESIGNLINE

Simplex Products at a Glance



Simplex Design Line Functionality Meets Design

Reveal the attractive side of technology with Simplex heating valves. Discover top-quality innovations and experience quality living comfort!

The Simplex Design Line Range includes the following:

- ◆ Regulator valves and connection accessories
- ◆ Thermostatic valve sets
- ◆ Thermostatic heads
- ◆ Rosettes and design covers



Product benefits at a glance:

- ◆ *Innovative technology with a high-end design*
- ◆ *Universal applications*
- ◆ *Convenient filling and draining*
- ◆ *Simple hydraulic balancing*
- ◆ *For stylish living*

I Simplex Design Regulator Valves - 4 in 1

Impressively showcase your bathroom radiators:
VARIOCON and VARIODESIGN regulator valves perfectly blend in with their slimline, minimalist styling, forming a harmonious entity with every design bathroom radiator.
Design regulator valves are also setting new benchmarks when it comes to flexibility. They can be used as angle or straight valves, with either right- or left-handed thermostatic heads attached. One valve for all types of connection.



VARIODESIGN Regulator Valves

Features

- ♦ All-purpose valve, angle and straight form
- ♦ Thermostat can be converted for right or left-handed connection
- ♦ Valve insert with M 30 x 1.5 sensor connection can be pre-set using a special key supplied
- ♦ Integral fill and drain valve for hose connections
- ♦ Modern design of thermostatic head with liquid sensor and infinitely adjustable from 7 to 28 °C, with frost protection function



Draining with hose connection

4 connection options



Straight form
Thermostatic head on right



Straight form
Thermostatic head on left



Angle form
Thermostatic head on right



Angle form
Thermostatic head on left

VARIODESIGN Regulator Valve Set

Consisting of: regulator valve, design cover made of plastic construction with polished finish, design thermostatic head. For towel and design radiators with Rp1/2 or G3/4m Euro taper connection, 50 mm axial distance.



White

Article no.	Dimensions
F12060	G3/4f x G3/4m Euro taper



Chromed

Article no.	Dimensions
F12061	G3/4f x G3/4m Euro taper



VARIOCON Design Regulator Valves

Infinitely swivelling design

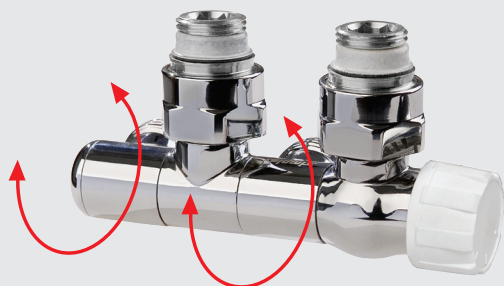
The slimline, minimalist form of VARIOCON design regulator valves in highly polished chrome-plated brass is the perfect solution for tricky installation situations. The connections can be infinitely swivelled for angle or straight connections. The valves can be fully swivelled and therefore conveniently fitted from the right or left.

Features:

- ◆ Suitable for use as an angle or straight valve
- ◆ Left or right connection
- ◆ Valve insert with M 30 x 1.5 sensor connection can be pre-set using a special key supplied
- ◆ For connection with compression adapters
- ◆ With self-sealing connection nipples and cone inserts for towel and design radiators with Rp1/2 or G3/4 m Euro taper connection.

Swivelling VARIOCON Design Regulator Valve

Axial distance 50 mm, axial offset 25 mm, no thermostatic head.



Chromed

Article no.	Dimensions
F12019	G3/4f x G3/4m Euro taper

Swivelling VARIOCON Design Regulator Valve Kit (2-part)

Axial offset 25 mm, no thermostatic head.



Chromed

Article no.	Dimensions
F12016	G3/4f x G3/4m Euro taper

Comap Design Regulator Valves

Comap regulator valve with infinitely pre-adjustable valve insert, sensor connection M 30 × 1.5.

For pipe-side connection with compression adapters, with connection nipples with O-ring seal, for towel and design radiators with Rp 1/2 connection, 50 mm axial distance.

Design Regulator Valve 738, Angle Design White (RAL 9016)



Art. no.	Dimensions
C738025	G1/2m x G3/4m Euro taper

Chromed



Art. no.	Dimensions
C738015	G1/2m x G3/4m Euro taper

Stainless steel



Art. no.	Dimensions
C738035	G1/2m x G3/4m Euro taper

Design Regulator Valve 739, Straight Design White (RAL 9016)



Art. no.	Dimensions
C739024	G1/2m x G3/4m Euro taper

Chromed



Art. no.	Dimensions
C739014	G1/2m x G3/4m Euro taper

Stainless steel



Art. no.	Dimensions
C739034	G1/2m x G3/4m Euro taper

Comap Design Thermostatic Valve Sets

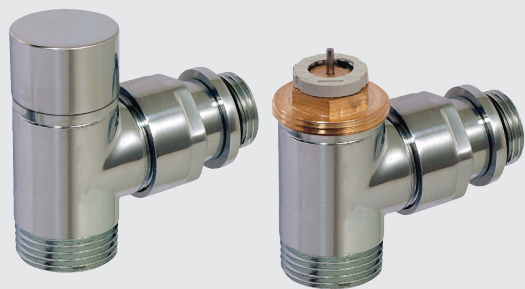
Comap design thermostatic valve sets consist of a valve body with infinitely pre-adjustable valve insert and shut-off lockshield valve. Sensor connection for thermostatic heads M 30 x 1.5. For pipe-side connection with compression adapters. With connection nipples with O-ring seal for compact and design radiators with Rp1/2 connection.

Design Thermostatic Valve Set, Angle Design D 3804 White (RAL 9016)



Art. no.	Dimensions
C3804314	G1/2m x G3/4m Euro taper

Chromed



Art. no.	Dimensions
C3804324	G1/2m x G3/4m Euro taper

Stainless steel



Art. no.	Dimensions
C3804334	G1/2m x G3/4m Euro taper



Design thermostatic valve set, angle design, white

Chromed design thermostatic valve set, straight design

Comap Design Thermostatic Valve Sets

Comap design thermostatic valve sets consist of a valve body with infinitely pre-adjustable valve insert and shut-off lockshield valve. Sensor connection for thermostatic heads M 30 x 1.5. For pipe-side connection with compression adapters. With connection nipples with O-ring seal for compact and design radiators with Rp1/2 connection.

Design Thermostatic Valve Set, Triaxial Design D 3933 White (RAL 9016)



Art. no.	Dimensions
CL342001001	G1/2m x G3/4m Euro taper

Chromed



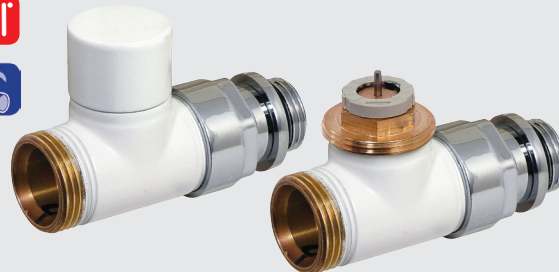
Art. no.	Dimensions
CL342002001	G1/2m x G3/4m Euro taper

Stainless steel



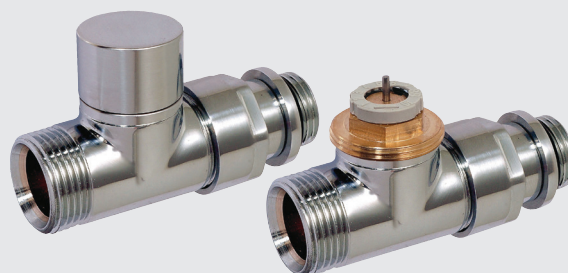
Art. no.	Dimensions
CL342003001	G1/2m x G3/4m Euro taper

Design Thermostatic Valve Set, Straight Design D 3805 White (RAL 9016)



Art. no.	Dimensions
C3805314	G1/2m x G3/4m Euro taper

Chromed



Art. no.	Dimensions
C3805324	G1/2m x G3/4m Euro taper

Stainless steel



Art. no.	Dimensions
C3805334	G1/2m x G3/4m Euro taper

Beautiful from Top to Bottom

You're guaranteed to make the right choice with these thermostatic heads. Create an ambience of well-being in an instant, thanks to their outstanding control accuracy. And there's even the right style for every ambience – polished chrome,

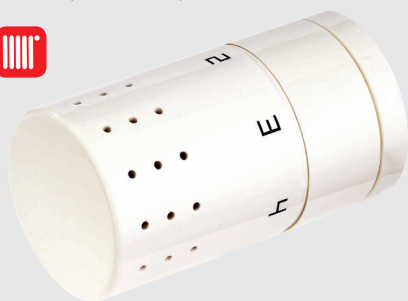
modern white-painted look or restrained stainless steel. Even the most discerning customers are sure to find what they're looking for here!

SENSITIVE Design Thermostatic Head

Comap thermostatic head M 30 x 1.5 with integrated liquid sensor, modern perforated design, temperature range: 7 to 28 °C,

frost protection function, tested to DIN EN 215, concealed union nut, only 0.4 °C hysteresis (energy-saving)

White (RAL 9016)



Chromed



Stainless steel



Art. no.	Art. no.	Art. no.	Dimensions
C102000	C102100	C102200	M30 x 1.5

ROTHERM Design Thermostatic Head

Rosswainer thermostatic head M 30 x 1.5, with liquid sensor and setting limit, temperature range 7 to 28 °C, tested to DIN EN 215, with zero setting.

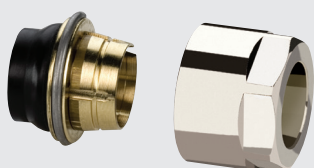


Chromed

Art. no.	Dimensions
F35356	M30 x 1.5

F11 Design Compression Adapter Set for blank, nickel- and chrome-plated copper pipes, carbon steel pipes and stainless steel pipes

2 no. compression adapters for connecting design bathroom valves, suitable for G 3/4 m Euro taper, elastic seal, extended clamp ring for high pull forces, no support sleeves required, nut (wrench size 27 mm), with fixed stop.



Chromed

Article no.	Dimensions
F11132	15 x 1 mm x G3/4f Euro taper

F3 Design Compression Adapter Set for plastic and multilayer composite pipes

2 no. compression adapters for connecting design bathroom valves, suitable for G 3/4 m Euro taper, consisting of nut (wrench size 27 mm), plastic clamp ring and sleeve, O-ring seal on the sleeve, with fixed stop.



Chromed

Article no.	Dimensions
F11482	16 x 2 mm x G3/4f Euro taper
F11483	17 x 2 mm x G3/4f Euro taper

More information on suitable pipes can be found on our website at www.simplex-armaturen.de

Design Covers

One click for a perfect appearance

The simple click-in mechanism of Simplex design covers is unique on the market. Create a visual feature in your home with a single click. Heating connections become invisible in an instant, without the use of any tools.

Different versions of Simplex design covers are available. Design to click-in – simply beautiful!

Design Cover for VARIODESIGN Regulator Valve

Plastic construction with polished finish, for left and right-handed connections. Suitable for use with F12060 and F12061 for installation on bathroom radiators.



Article no.	Version	Colour
F12070	angle, left or right-handed connection	white ¹
F12071	angle, left or right-handed connection	chromed

Design Cover for VARIOCON Regulator Valve

Plastic construction with polished finish, for angle version. Suitable for use with F12020 and F12018 for installation on bathroom radiators.



Article no.	Version	Colour
F12034	angle, right-handed connection	white ¹
F12035	angle, right-handed connection	chromed
F12036	angle, left-handed connection	white ¹
F12037	angle, left-handed connection	chromed

Design Cover for Actuator

Plastic construction with polished finish, suitable for use with the design cover for VARIOCON regulator valves. Suitable for use with actuators of VARIOCON regulator valves with actuator F12018.



Article no.	Colour
F12041	white ¹
F12042	chromed

Design Cover for Simplex H-module

Plastic construction with polished finish, for H-modules with 50 mm axial distance.



Article no.	Version	Colour
F10093	straight	white ¹
F10094	angle	white ¹
F10095	straight	chromed
F10096	angle	chromed

Design Cover for VARIOCON Connection Valve

Plastic construction with polished finish, for angle versions, for left and right-handed connection. Suitable for F12001 - F12004, F10026 and F10027.



Article no.	Version	Colour
F12025	angle, left or right-handed connection	white ¹
F12026	angle, left or right-handed connection	chromed



VARIOCON regulator valve with actuator F12018 and matching design cover

¹ white similar to RAL 9016

Design Rosettes

Stellar performance

High-quality chrome look rosettes are further highlights of the Simplex Design Line. Whether single-section with a dovetail fastener for wall mounting or as a two-part double rosette – either high or flat version – you'll always make a stellar decision with Simplex rosettes!

Design Wall Rosette

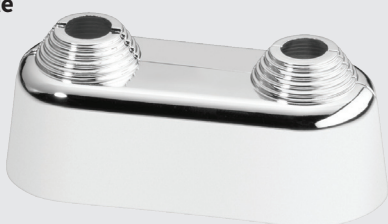
One-piece,
with dovetail fastener



Article no.	Dimensions	Colour
F44031	12 mm	chromed
F44032	15 mm	chromed
F44033	18 mm - 3/8	chromed
F44034	22 mm - 1/2	chromed
F44035	28 mm - 3/4	chromed
F44036	33 mm - 1	chromed

Design Double Rosette

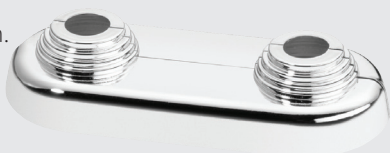
High version,
two-piece,
for pipes Ø 10 - 22 mm.



Article no.	Dimensions	Colour
F44224	10-22 mm x axial distance 50 mm	chromed

Design Double Rosette

Flat version,
two-piece,
for pipes Ø 10 - 22 mm.



Article no.	Dimensions	Colour
F44234	10-22 mm x axial distance 50 mm	chromed

Wall Rosette

One-piece,
with dovetail fastener



Article no.	Dimensions	Colour
F44001	12 mm	white ¹
F44002	15 mm	white ¹
F44003	18 mm - 3/8	white ¹
F44004	22 mm - 1/2	white ¹
F44005	28 mm - 3/4	white ¹
F44006	33 mm - 1	white ¹

Double Rosette

High version,
two-piece,
for pipes Ø 10 - 22 mm.



Article no.	Dimensions	Colour
F44201	10-22 mm x axial distance 35 mm	white ¹
F44202	10-22 mm x axial distance 40 mm	white ¹
F44203	10-22 mm x axial distance 45 mm	white ¹
F44204	10-22 mm x axial distance 50 mm	white ¹

Double Rosette

Flat version,
two-piece,
for pipes Ø 10 - 22 mm.



Article no.	Dimensions	Colour
F44214	10-22 mm x axial distance 50 mm	white ¹

¹ white similar to RAL 9016



The photos in this brochure are for illustration only and may differ from the respective product.
Errors and technical changes reserved.

02/2017



KE KELIT NZ Ltd.
0800 4 KE KELIT
0800 4 5353548
climatecontrol@kekelit.co.nz
www.kekelit.co.nz