

Radiator Valves



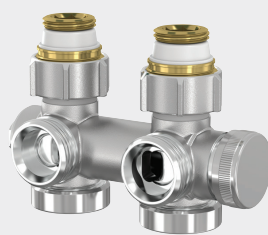
- Radiator Connection Valves
- Thermostatic Heads and Valves
- Radiator Lockshield Valves
- Radiator Plugs

EXCLUSIV H-Module



P. 66

UNIVERSAL H-Module with Drain



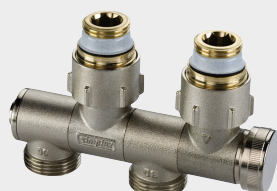
P. 68

VARIOCON N Connection Valve



P. 69

VARIOCON FE Connection Valve



P. 71

VARIOCON U Connection Valve



P. 73

EXCLUSIV Single Valve with Male Thread



P. 75

EXCLUSIV Single Valve with Female Thread



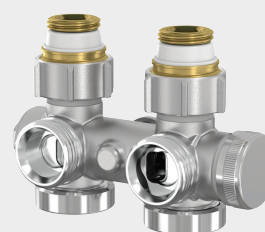
P. 76

EXCLUSIV H-Module for One-pipe System



P. 79

UNIVERSAL H-Module for One-pipe System with Drain



P. 81

Reverser for Reversed Supply and Return Pipes



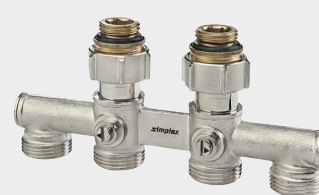
P. 82

Reverser for One-pipe System for Reversed Supply and Return Pipes



P. 84

4-way H-Module



P. 85

EXCLUSIV H-Module with Telescope Adjustment



P. 87

MULTIGRIP H-Module



P. 88

MULTIGRIP H-Module with Telescope Adjustment



P. 89

Connection Accessories



P. 90

VARIODESIGN Regulator Valve



P. 92

VARIOCON Swivelling Regulator Valve



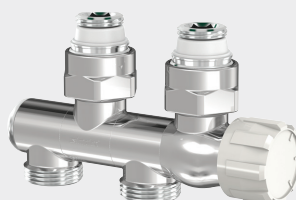
P. 94

VARIOCON Swivelling Regulator Valve with Electro-thermal Actuator



P. 95

VARIOCON Swivelling Design Regulator Valve



P. 96

VARIOCON Swivelling Design Regulator Valve Kit



P. 97

Thermostatic Valve Body - Straight Shape



P. 98

Thermostatic Valve Body - Angle Shape



P. 99

Thermostatic Valve Body - Axial Shape



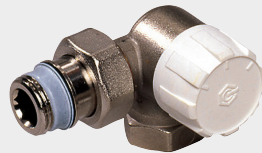
P. 99

Thermostatic Valve Body - Double-angle Shape Left



P. 100

Thermostatic Valve Body - Double-angle Shape Right



P. 100

Thermostatic Valve Body - With Fine Pre-adjustment



P. 103

Thermostatic Valve Body - With Extended Flow Coefficient



P. 104

Connection Set



P. 105

Accessories for Thermostatic Valve Bodies



P. 106

Design Thermostatic Head TC-D1



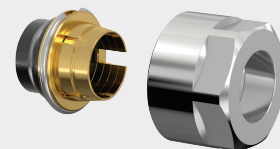
P. 108

Standard Thermostatic Head TC-S4



P. 110

Design Connection Accessories



P. 111

Radiator Lockshield Valve M with Drain and Male Thread



P. 113

Radiator Lockshield Valve M with Drain and Female Thread



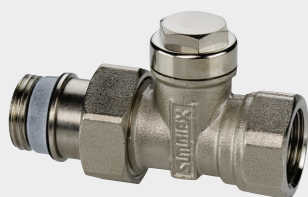
P. 114

Radiator Lockshield Valve N with Male Thread



P. 115

Radiator Lockshield Valve N with Female Thread



P. 116

Accessories for Radiator Lockshield Valves



P. 118

DIN Adapter



P. 119

Blind Plug



P. 120

Reducing Plug



P. 121

Drain Plug



P. 122

Air Plug



P. 125

Air Plug for Solar



P. 127

Fill and Drain Plug



P. 128

Blind Plug for Steel and Cast Iron Radiators



P. 131

Air Plug for Steel and Cast Iron Radiators



P. 131

Reducing Plug for Steel and Cast Iron Radiators



P. 132

H-MODULES

EXCLUSIV H-Module with Connection Nipples

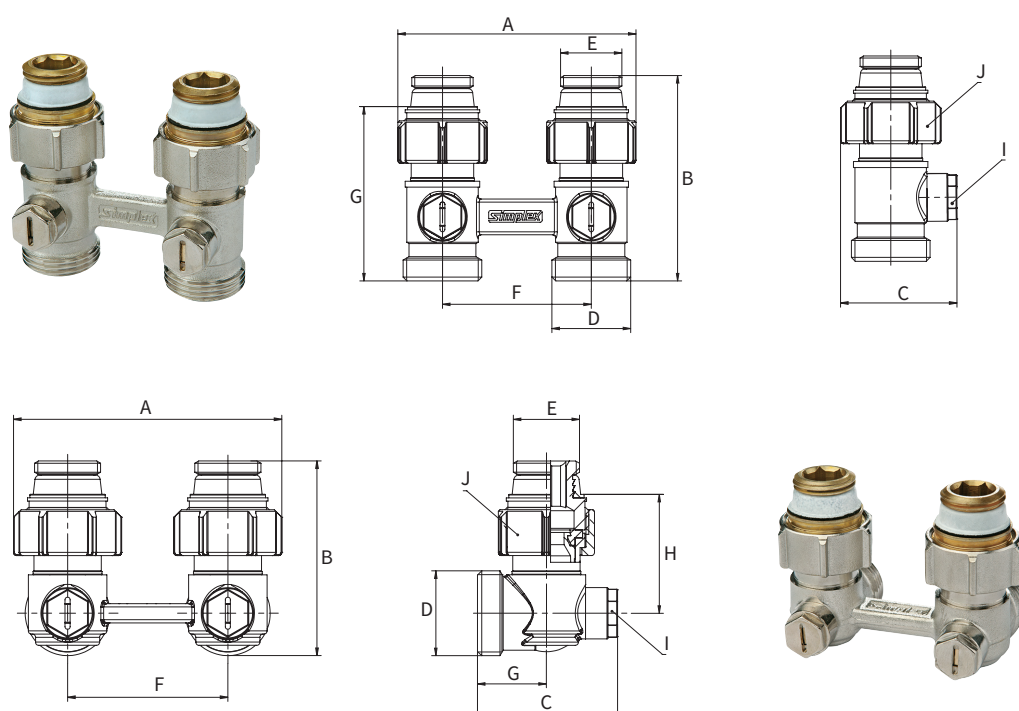
PG = 701

Connection valve with ball shut-off for radiators with integrated valve, control head with a concealed stop, with Euro taper on the pipe side for connection with compression adapters, 50 mm axial distance.

With self-sealing connection nipples for radiators with integrated valve with Rp 1/2" connection.

- Components made of nickel-plated brass
- Sealing materials: EPDM, PTFE.
- Max. operating temp.: 110 °C permanent temperature, 130 °C short-term
- Max. operating pressure: 10 bar

→ Matching design covers, compression adapters and assembly accessories available!



Type	Version	Connection			Article no.
		D (ET)	E		
HB EXCLUSIV D1/50	straight	G 3/4" M	G 1/2" M	5	F10010
HB EXCLUSIV E1/50	angle	G 3/4" M	G 1/2" M	5	F10012



Dimensions

Type	Dimensions [mm]							
	A	B	C	F	G	H	I (WS)	J (WS)
HB EXCLUSIV D1/50	84	69	39	50	58.6	-	13	30
HB EXCLUSIV E1/50	84	71	44	50	21.5	37	13	30

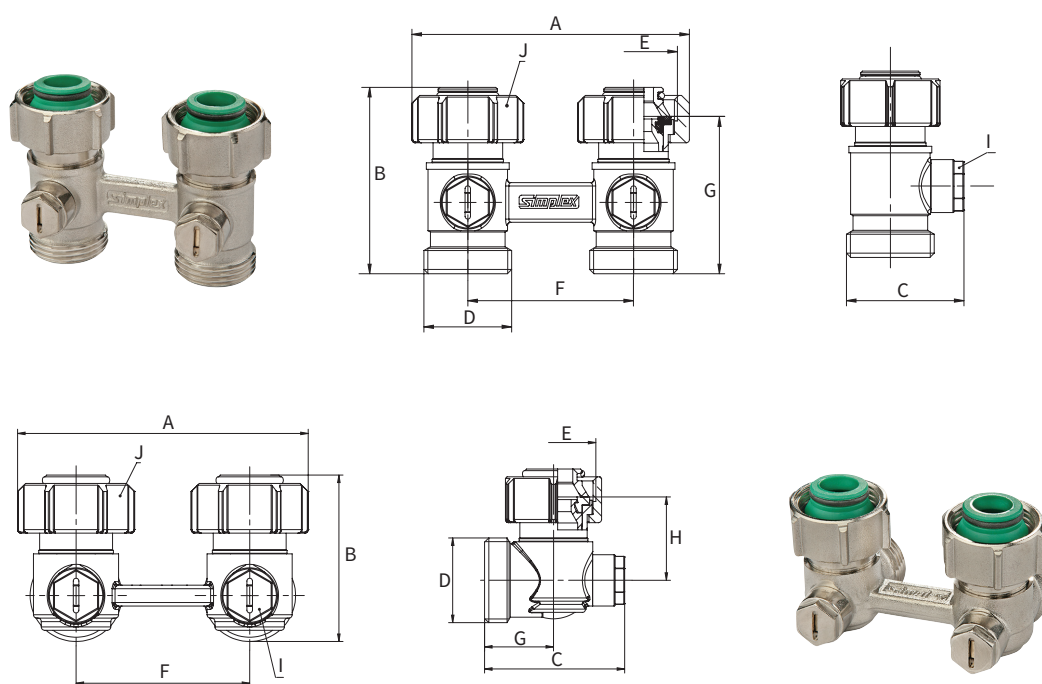
EXCLUSIV H-Module with Cone Inserts

PG = 701

Connection valve with ball shut-off for radiators with integrated valve, control head with a concealed stop, with Euro taper on the pipe side for connection with compression adapters, 50 mm axial distance.
With cone inserts for radiators with integrated valve with G 3/4" M (Euro taper) connection.

- Components made of nickel-plated brass
- Sealing materials: EPDM, PTFE.
- Max. operating temp.: 110 °C permanent temperature, 130 °C short-term
- Max. operating pressure: 10 bar

→ Matching design covers, compression adapters and assembly accessories available!



Type	Version	Connection			Article no.
		D (ET)	E		
HB EXCLUSIV D2/50	straight	G 3/4" M	G 3/4" F	5	F10014
HB EXCLUSIV E2/50	angle	G 3/4" M	G 3/4" F	5	F10016



Dimensions

Type	Dimensions [mm]							
	A	B	C	F	G	H	I (WS)	J (WS)
HB EXCLUSIV D2/50	84	56	35.5	50	47.5	-	13	30
HB EXCLUSIV E2/50	84	48	44.0	50	21.5	26	13	30

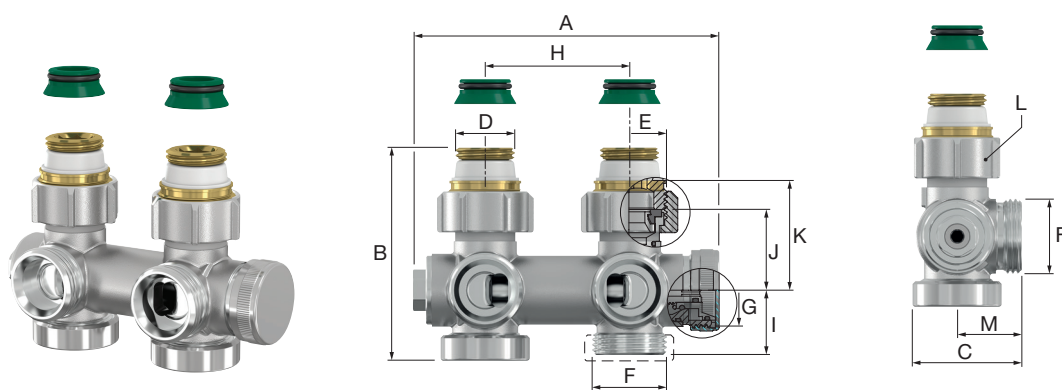
UNIVERSAL H-Module with Drain


PG = 701

H-module with spindle shut-off for radiators with integrated valve, combines angle and straight design, convertible for right- or left-side connection, integrated drain valve, easy draining by connecting a standard hose connection, with self-sealing connection nipples and cone inserts for radiators with integrated valve with Rp 1/2" or G 3/4" M (Euro taper) connection, with Euro taper on the pipe side for connection with compression adapters, axial distance 50 mm.

- H-Module with 4 connection options
- Easy filling and draining
- Components made of nickel-plated brass
- Sealing materials: EPDM
- Max. operating temp.: 110 °C permanent temperature, 130 °C short-term
- Max. operating pressure: 10 bar

→ **Matching compression adapters and assembly accessories available!**



Type	Version	Connection			Drain (G)		Article no.
		D	E	F (ET)			
HB UNIVERSAL w. Drain	straight and angle	G 1/2" M	G 3/4" F	G 3/4" M	G 3/4" M	1	F10447



Dimensions

Type	Dimensions [mm]							
	A	B	C	H	I	J	K	L (WS)
HB UNIVERSAL w. Drain	106	74	38	50	22.5	50.5	22.5	30

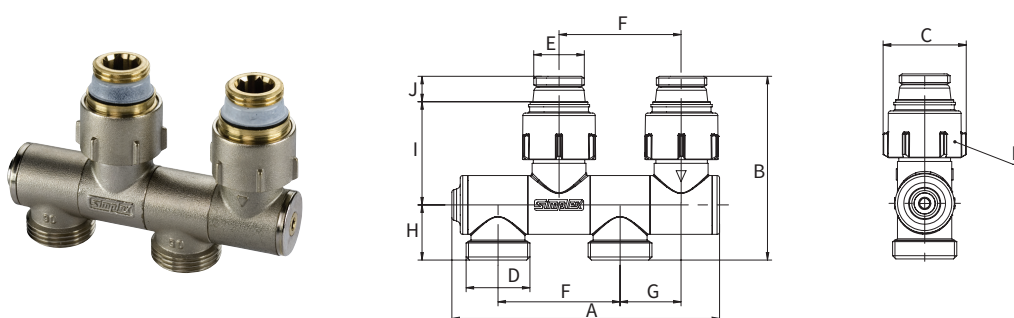
VARIOCON N Connection Valve with Connection Nipples

PG = 701

Connection valve with shut-off for radiators with integrated valve, swivelling for angle or straight connection, left or right connection, with Euro taper on the pipe side for connection with compression adapters, 50 mm axial distance, 25 mm axial offset. With self-sealing connection nipples for radiators with integrated valve with Rp 1/2" connection.

- Continuously swivelling connections for a flexible installation
- 4 connection options
- Components made of nickel-plated brass
- Sealing materials: EPDM
- Max. operating temp.: 110 °C permanent temperature, 130 °C short-term
- Max. operating pressure: 10 bar

→ **Matching design covers and compression adapters available!**



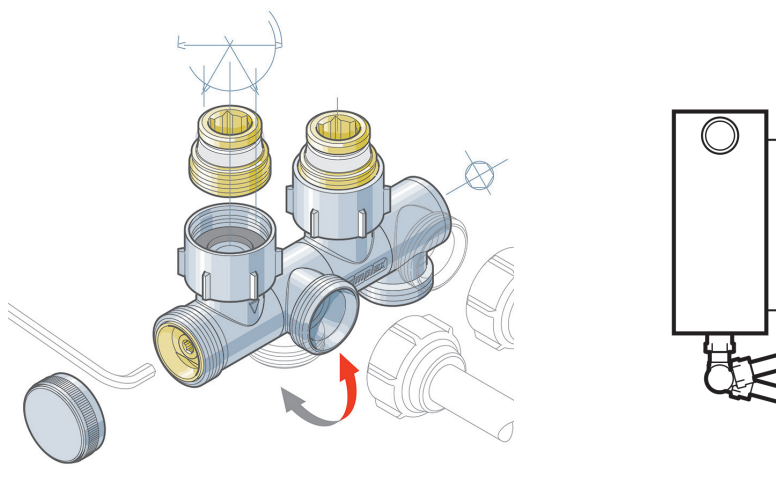
Type	Version	Connection			Article no.
		D (ET)	E		
HB VARIOCON N1	straight and angle	G 3/4" M	G 1/2" M	1 / 5	F12001



Dimensions

Type	Dimensions [mm]								
	A	B	C	F	G	H	I	J	K (WS)
HB VARIOCON N1	109	75	34	50	25	22.5	42.1	10.4	30

VARIOCON connection valves: continuously swivelling connection for angle or straight installation



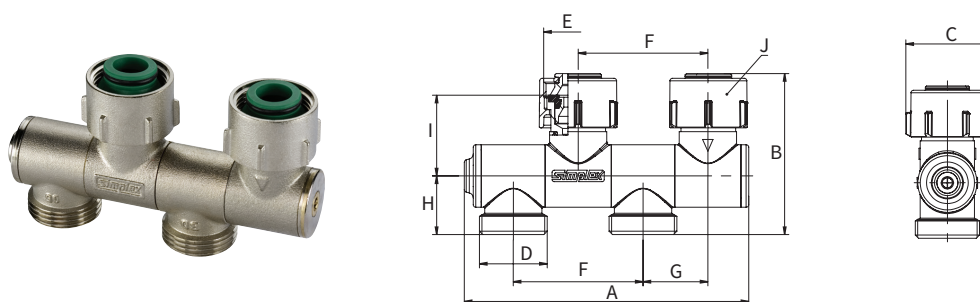
VARIOCON N Connection Valve with Cone Inserts

PG = 701

Connection valve with shut-off for radiators with integrated valve, swivelling for angle or straight connection, left or right connection, with Euro taper on the pipe side for connection with compression adapters, 50 mm axial distance, 25 mm axial offset. With cone inserts for radiators with integrated valve with G 3/4" M (Euro taper) connection.

- Continuously swivelling connections for a flexible installation
- 4 connection options
- Components made of nickel-plated brass
- Sealing materials: EPDM
- Max. operating temp.: 110 °C permanent temperature, 130 °C short-term
- Max. operating pressure: 10 bar

→ Matching design covers and compression adapters available!



Type	Version	Connection			Article no.
		D (ET)	E		
HB VARIOCON N2	straight and angle	G 3/4" M	G 3/4" F	1 / 5	F12002



Dimensions

Type	Dimensions [mm]							
	A	B	C	F	G	H	I	J (WS)
HB VARIOCON N2	109	62	34	50	25	22.5	31	30

VARIOCON FE Connection Valve with Connection Nipples

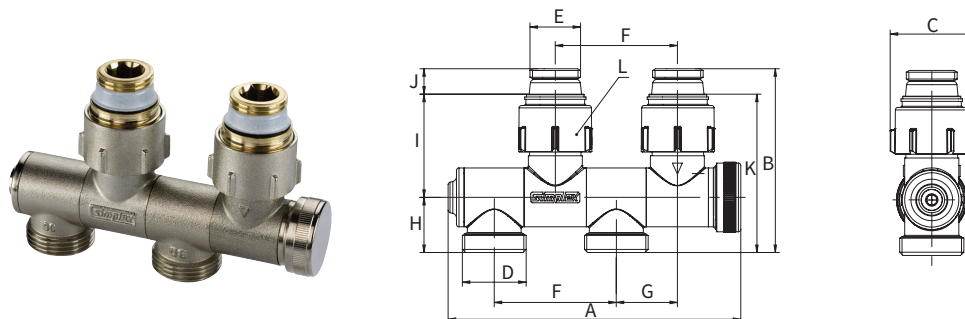
PG = 701

Connection valve with shut-off for radiators with integrated valve, swivelling for angle or straight connection, left or right connection, draining or filling without adapter, simply by connecting a standard hose connection, with Euro taper on the pipe side for connection with compression adapters, 50 mm axial distance, 25 mm axial offset.

With self-sealing connection nipples for radiators with integrated valve with Rp 1/2" connection.

- Continuously swivelling connections for a flexible installation
- 4 connection options
- Draining or filling without adapter
- Components made of nickel-plated brass
- Sealing materials: EPDM
- Max. operating temp.: 110 °C permanent temperature, 130 °C short-term
- Max. operating pressure: 10 bar

→ Matching design covers and compression adapters available!



Type	Version	Connection			Article no.
		D (ET)	E		
HB VARIOCON FE1	straight and angle	G 3/4" M	G 1/2" M	1 / 5	F12003



Dimensions

Type	Dimensions [mm]									
	A	B	C	F	G	H	I	J	K	L (WS)
HB VARIOCON FE1	120	75	34	50	25	22.5	42.1	10.4	64.4	30

VARIOCON FE Connection Valve with Cone Inserts

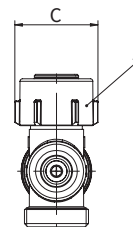
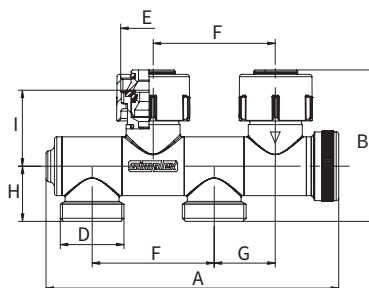
PG = 701

Connection valve with shut-off valve for radiators with integrated valve, swivelling for angle or straight connection, left or right connection, draining or filling without adapter, simply by connecting a standard hose connection, with Euro taper on the pipe side for connection with compression adapters, 50 mm axial distance, 25 mm axial offset.

With cone inserts for radiators with integrated valve with G 3/4" M (Euro taper) connection.

- Continuously swivelling connections for a flexible installation
- 4 connection options
- Draining or filling without adapter
- Components made of nickel-plated brass
- Sealing materials: EPDM
- Max. operating temp.: 110 °C permanent temperature, 130 °C short-term
- Max. operating pressure: 10 bar

→ Matching design covers and compression adapters available!



Type	Version	Connection			Article no.
		D (ET)	E		
HB VARIOCON FE2	straight and angle	G 3/4" M	G 3/4" F	1 / 5	F12004



Dimensions

Type	Dimensions [mm]							
	A	B	C	F	G	H	I	J (WS)
HB VARIOCON FE2	120	62	34	50	25	22.5	31	30

VARIOCON U Connection Valve with Connection Nipples

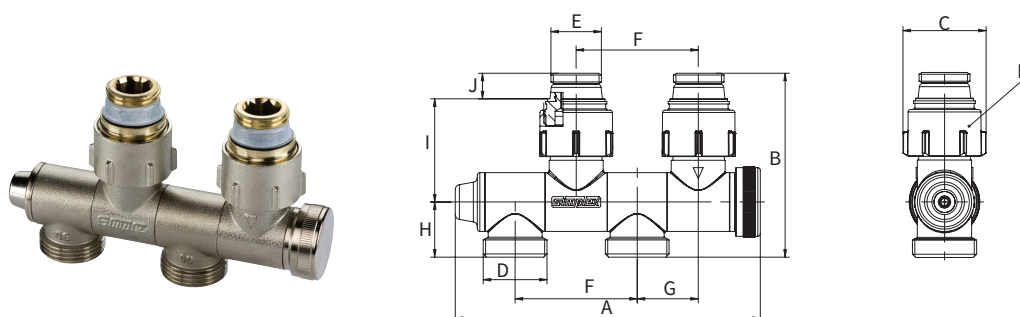
PG = 701

Connection valve with shut-off for radiators with integrated valve, for one-pipe (radiator supply ratio 25 - 100%) or two-pipe operation, swivelling for angle or straight connection, left or right connection, draining or filling without adapter, simply by connecting a standard hose connection, with Euro taper on the pipe side for connection with compression adapters, 50 mm axial distance, 25 mm axial offset.

With self-sealing connection nipples for radiators with integrated valve with Rp 1/2" connection.

- 4 connection options
- Draining or filling without adapter
- For one-pipe or two-pipe operation
- Components made of nickel-plated brass
- Sealing materials: EPDM
- Max. operating temp.: 110 °C permanent temperature, 130 °C short-term
- Max. operating pressure: 10 bar

→ Matching design covers and compression adapters available!



Type	Version	Connection			Article no.
		D (ET)	E		
HB VARIOCON U1	straight and angle	G 3/4" M	G 1/2" M	1 / 5	F10026



Dimensions

Type	Dimensions [mm]								
	A	B	C	F	G	H	I	J	K (WS)
HB VARIOCON U1	124.5	75	34	50	25	22.5	42.1	10.4	30

VARIOCON U Connection Valve with Cone Inserts

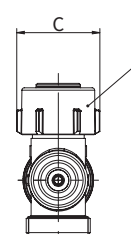
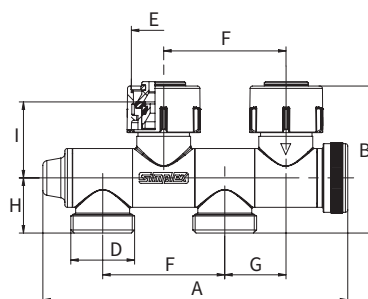
PG = 701

Connection valve with shut-off for radiators with integrated valve, for one-pipe (radiator supply ratio 25 - 100%) or two-pipe operation, swivelling for angle or straight connection, left or right connection, draining or filling without adapter, simply by connecting a standard hose connection, with Euro taper on the pipe side for connection with compression adapters, 50 mm axial distance, 25 mm axial offset.

With cone inserts for radiators with integrated valve with G 3/4" M (Euro taper) connection.

- 4 connection options
- Draining or filling without adapter
- For one-pipe or two-pipe operation
- Components made of nickel-plated brass
- Sealing materials: EPDM
- Max. operating temp.: 110 °C permanent temperature, 130 °C short-term
- Max. operating pressure: 10 bar

→ **Matching design covers and compression adapters available!**



Type	Version	Connection			Article no.
		D (ET)	E		
HB VARIOCON U2	straight and angle	G 3/4" M	G 3/4" F	1 / 5	F10027



Dimensions

Type	Dimensions [mm]							
	A	B	C	F	G	H	I	J (WS)
HB VARIOCON U2	124.5	64.5	34	50	25	22.5	31	30

SINGLE VALVES

Connection valve with ball shut-off for radiators with integrated valve, control head with a concealed stop.

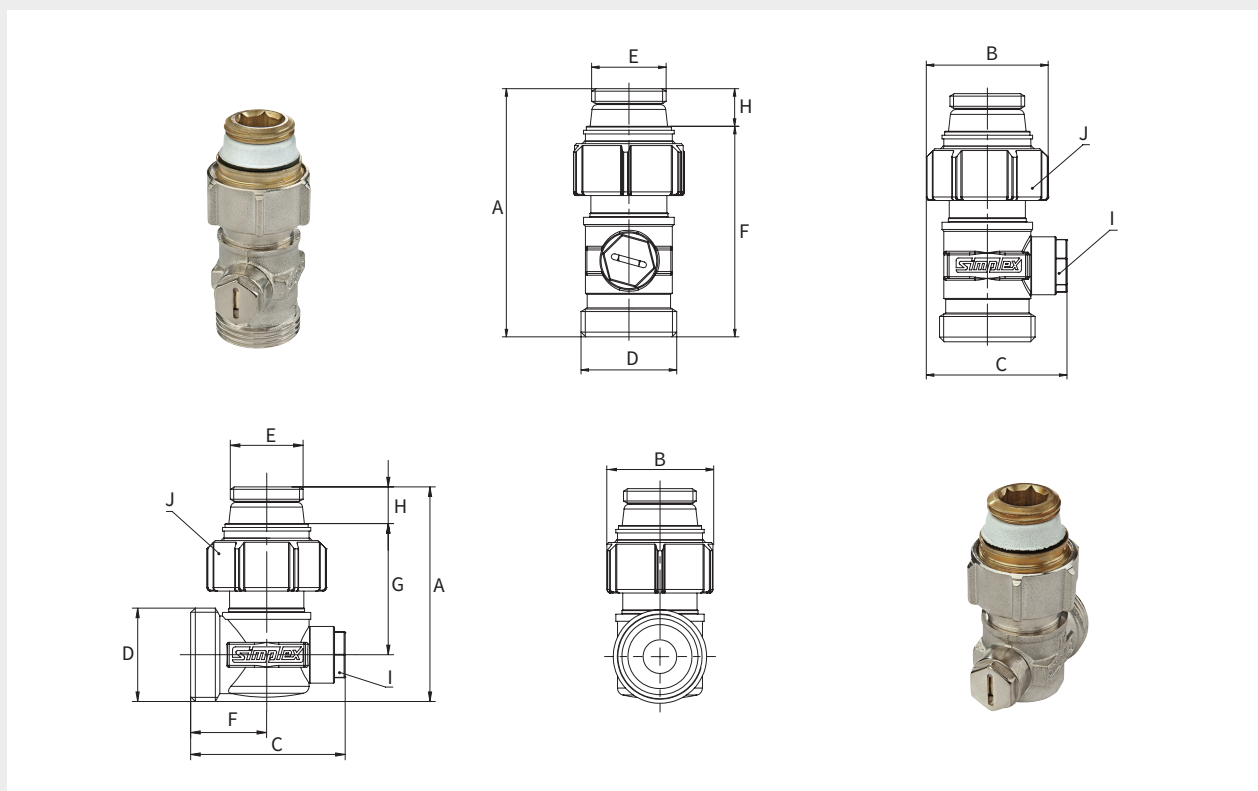
- Components made of nickel-plated brass
- Sealing materials: EPDM, PTFE
- Max. operating temp.: 110 °C permanent temperature, 130 °C short-term
- Max. operating pressure: 10 bar

EXCLUSIV Single Valve with Connection Nipples and Male Thread

PG = 701

With self-sealing connection nipples for radiators with integrated valve with Rp 1/2" connection.
With G 3/4" M (Euro taper) on the pipe side.

→ Matching compression adapters available!



Type	Version	Connection			Article no.
		D (ET)	E		
Single KH EXCLUSIV D1/AG	straight	G 3/4" M	G 1/2" M	1 / 10	F10018
Single KH EXCLUSIV E1/AG	angle	G 3/4" M	G 1/2" M	1 / 10	F10019



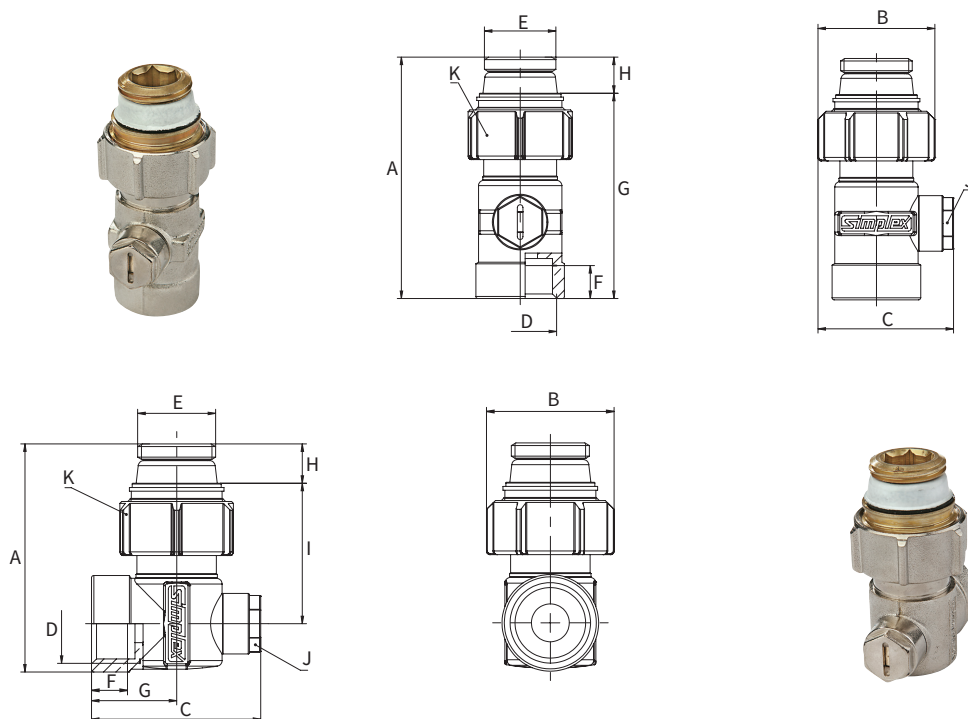
Dimensions


Type	Dimensions [mm]							
	A	B	C	F	G	H	I (WS)	J (WS)
Single KH EXCLUSIV D1/AG	68.5	34	39.0	58.0	-	10.4	13	30
Single KH EXCLUSIV E1/AG	60.7	34	43.7	21.5	37.1	10.4	13	30

EXCLUSIV Single Valve with Connection Nipples and Female Thread

PG = 701

With self-sealing connection nipples for radiators with integrated valve with Rp 1/2" connection.
With Rp 1/2" on the pipe side.



Type	Version	Connection			Article no.
		D	E		
Single KH EXCLUSIV D1/IG	straight	Rp 1/2"	G 1/2" M	1 / 10	F10022
Single KH EXCLUSIV E1/IG	angle	Rp 1/2"	G 1/2" M	1 / 10	F10023



Dimensions

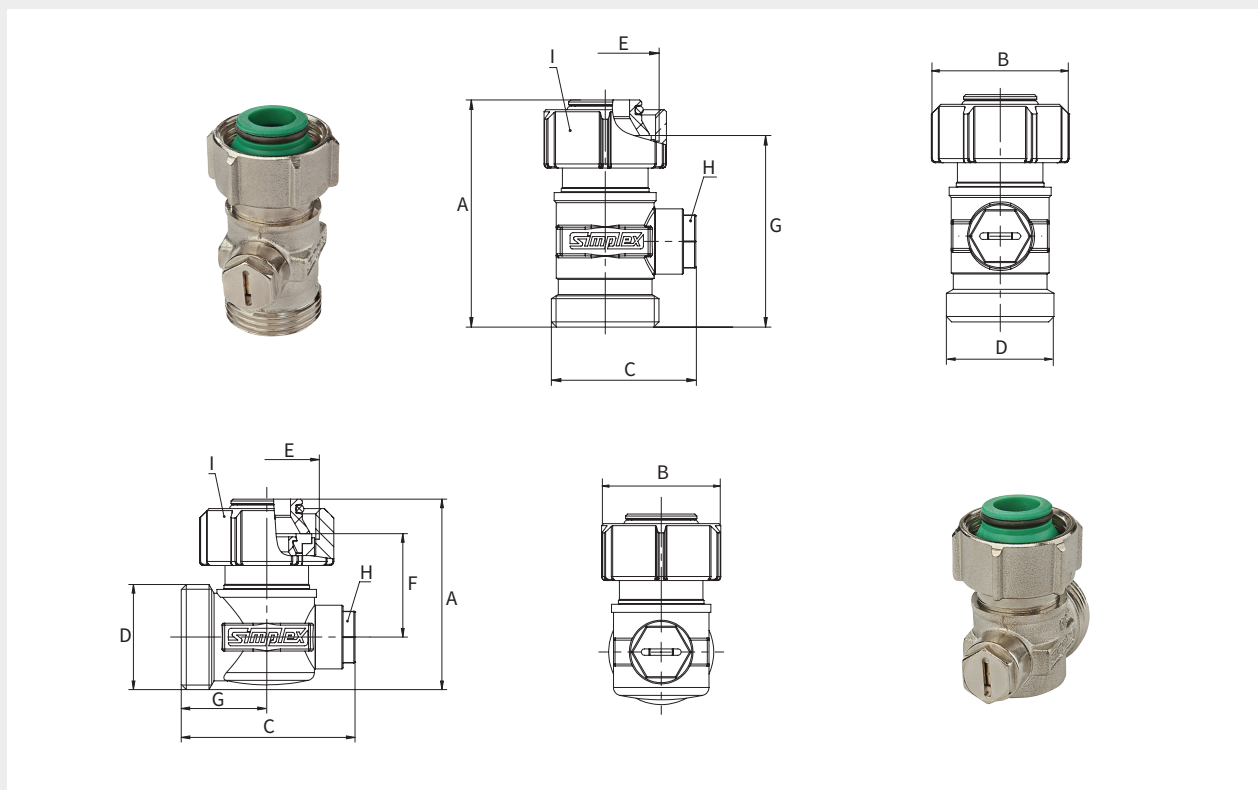
Type	Dimensions [mm]								
	A	B	C	F	G	H	I	J (WS)	K (WS)
Single KH EXCLUSIV D1/IG	69.5	34	39	9.5	59.1	10.4	-	13	30
Single KH EXCLUSIV E1/IG	60.5	34	48	9.5	22.5	10.4	37.1	13	30

EXCLUSIV Single Valve with Cone Inserts and Male Thread

PG = 701

With cone inserts for radiators with integrated valve with G 3/4" M (Euro taper) connection.
With G 3/4" M (Euro taper) on the pipe side.

→ Matching compression adapters available!



Type	Version	Connection			Article no.
		D (ET)	E		
Single KH EXCLUSIV D2/AG	straight	G 3/4" M	G 3/4" F	1 / 10	F10020
Single KH EXCLUSIV E2/AG	angle	G 3/4" M	G 3/4" F	1 / 10	F10021



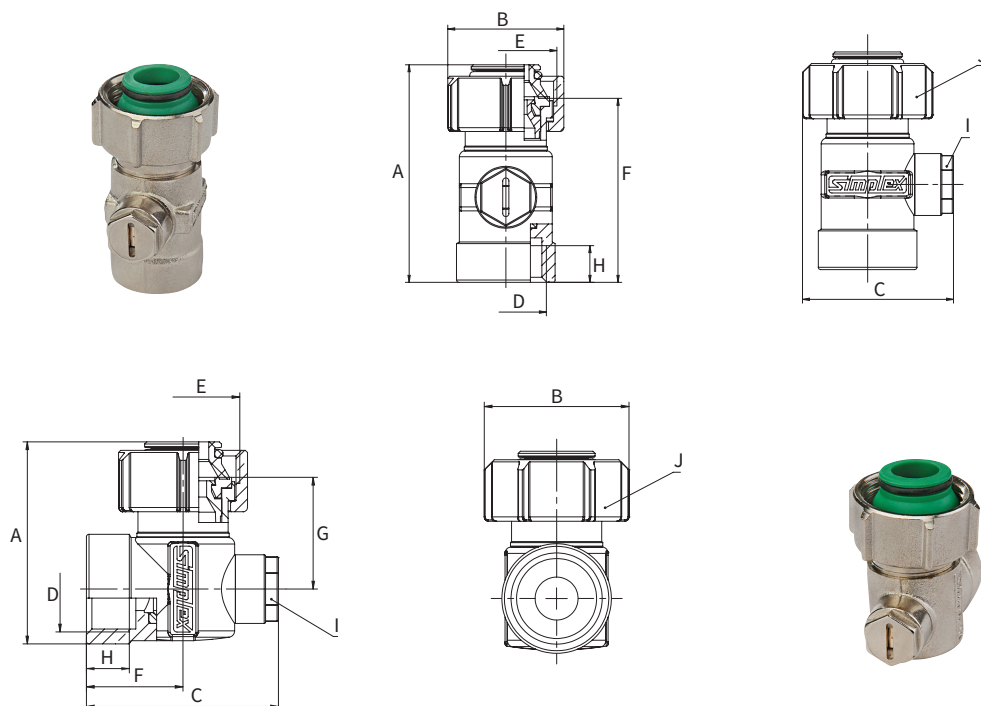
Dimensions


Type	Dimensions [mm]						
	A	B	C	F	G	H (WS)	I (WS)
Single KH EXCLUSIV D2/AG	55.7	34	39.0	-	47.0	13	30
Single KH EXCLUSIV E2/AG	47.9	34	43.7	26	21.5	13	30

EXCLUSIV Single Valve with Cone Inserts and Female Thread

PG = 701

With cone inserts for radiators with integrated valve with G $\frac{3}{4}$ " M (Euro taper) connection.
With Rp $\frac{1}{2}$ " on the pipe side.



Type	Version	Connection			Article no.
		D	E		
Single KH EXCLUSIV D2/IG	straight	Rp $\frac{1}{2}$ "	G $\frac{3}{4}$ " F	1 / 10	F10024
Single KH EXCLUSIV E2/IG	angle	Rp $\frac{1}{2}$ "	G $\frac{3}{4}$ " F	1 / 10	F10025



Dimensions

Type	Dimensions [mm]							
	A	B	C	F	G	H	I (WS)	J (WS)
Single KH EXCLUSIV D2/IG	57	34	39.5	48.0	-	9.5	13	30
Single KH EXCLUSIV E2/IG	48	34	45.0	22.5	26.0	9.5	13	30

H-MODULES FOR ONE-PIPE SYSTEM

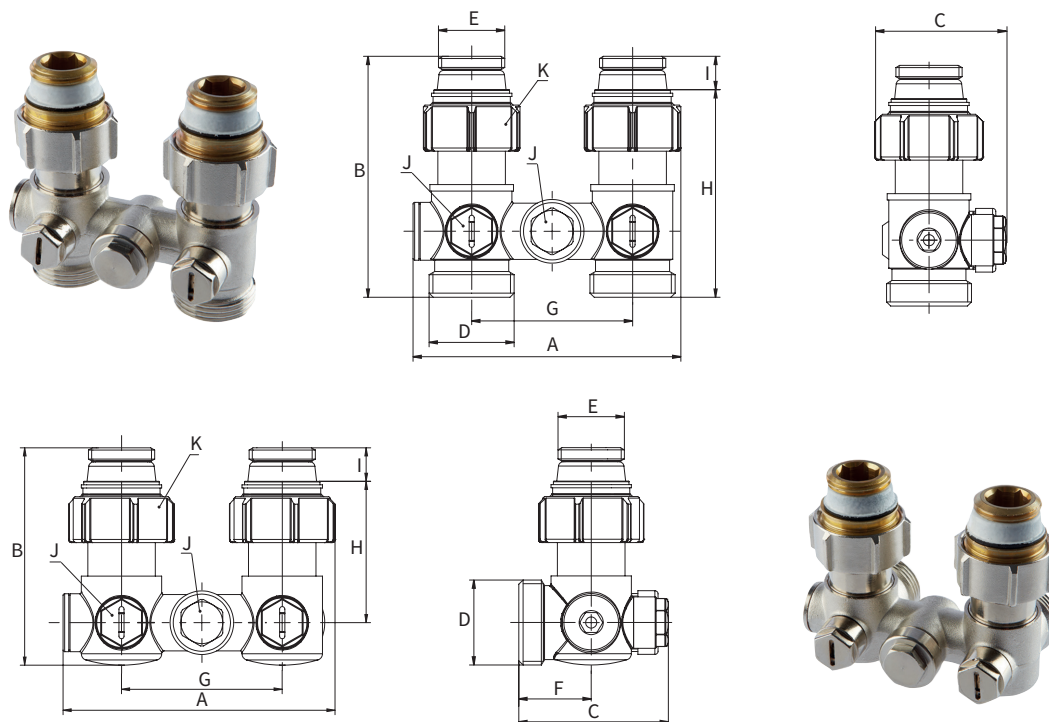
EXCLUSIV H-Module for One-pipe System with Connection Nipples

PG = 701

Connection valve with backflow protection for radiators with integrated valve, radiator supply ratio 30 - 100% (factory set to 35%), with ball shut-off, control head with a concealed stop, with Euro taper on the pipe side for connection with compression adapters, 50 mm axial distance. Supply and return line exchangeable by replacing the backflow protection. With self-sealing connection nipples for radiators with integrated valve with Rp 1/2" connection.

- Incl. backflow protection to avoid unintentional gravity circulation
- Components made of nickel-plated brass
- Sealing materials: EPDM, PTFE
- Max. operating temp.: 110 °C permanent temperature, 130 °C short-term
- Max. operating pressure: 10 bar

→ Matching compression adapters and assembly accessories available!



Type	Version	Connection			Article no.
		D (ET)	E		
HB EXCLUSIV one-pipe D1/50	straight	G 3/4" M	G 1/2" M	5	F10001
HB EXCLUSIV one-pipe E1/50	angle	G 3/4" M	G 1/2" M	5	F10003



Dimensions

Type	Dimensions [mm]								
	A	B	C	F	G	H	I	J (WS)	K (WS)
HB EXCLUSIV one-pipe D1/50	83	75.0	41.0	-	50	64.5	10.4	13	30
HB EXCLUSIV one-pipe E1/50	85	68.0	46.5	22.5	50	44.0	10.4	13	30

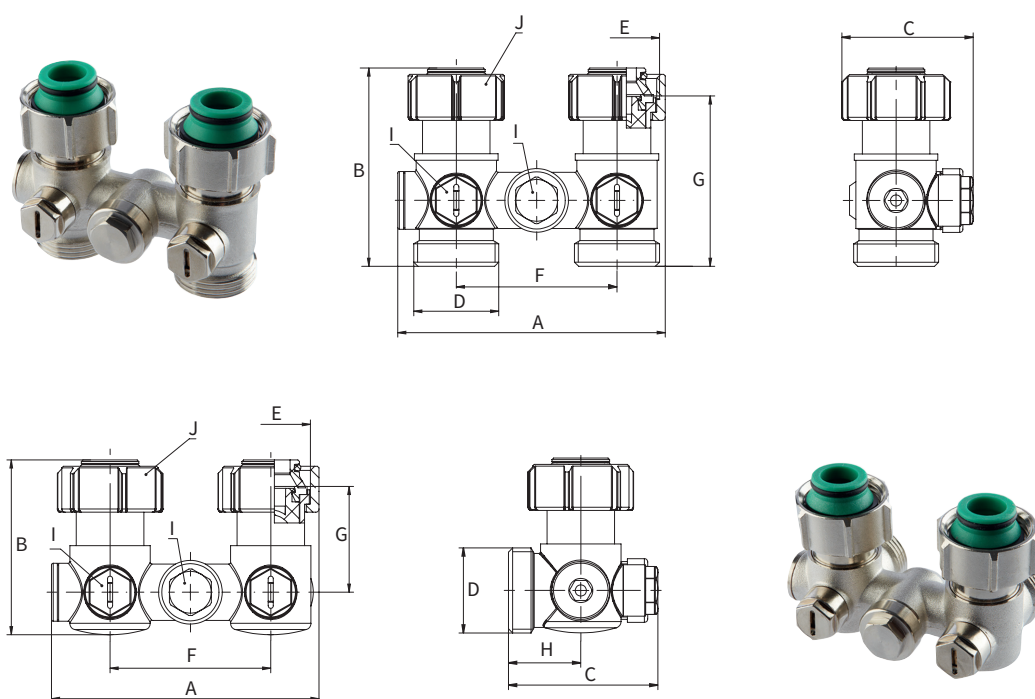
EXCLUSIV H-Module for One-pipe System with Cone Inserts

PG = 701

Connection valve with backflow protection for radiators with integrated valve, radiator supply ratio 30 - 100% (factory set to 35%), with ball shut-off, control head with a concealed stop, with Euro taper on the pipe side for connection with compression adapters, 50 mm axial distance. Supply and return line exchangeable by replacing the backflow protection. With cone inserts for radiators with integrated valve with G 3/4" M (Euro taper) connection.

- Incl. backflow protection to avoid unintentional gravity circulation
- Components made of nickel-plated brass
- Sealing materials: EPDM, PTFE
- Max. operating temp.: 110 °C permanent temperature, 130 °C short-term
- Max. operating pressure: 10 bar

→ Matching compression adapters and assembly accessories available!



Type	Version	Connection			Article no.
		D (ET)	E		
HB EXCLUSIV one-pipe D2/50	straight	G 3/4" M	G 3/4" F	5	F10005
HB EXCLUSIV one-pipe E2/50	angle	G 3/4" M	G 3/4" F	5	F10007



Dimensions

Type	Dimensions [mm]							
	A	B	C	F	G	H	I (WS)	J (WS)
HB EXCLUSIV one-pipe D2/50	85	62.0	41.0	50	53.4	-	13	30
HB EXCLUSIV one-pipe E2/50	85	54.5	46.5	50	32.9	22.5	13	30

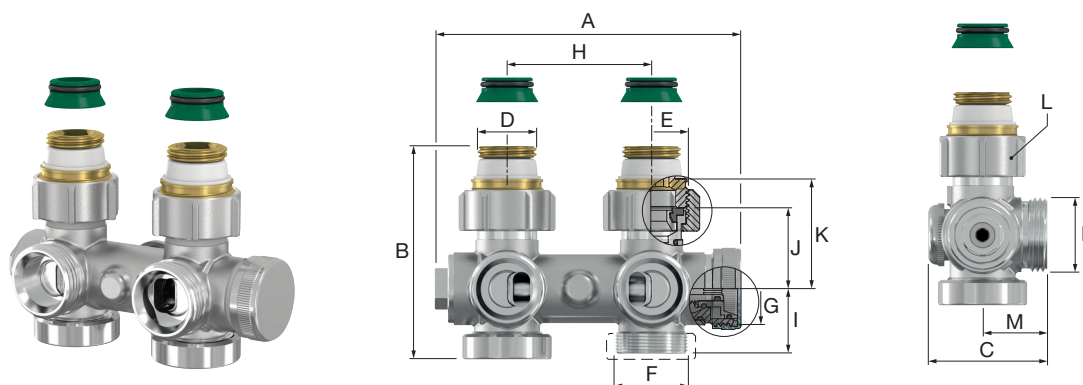
UNIVERSAL H-Module for One-pipe System with Drain


PG = 701

H-module with spindle shut-off for radiators with integrated valve, for one-pipe and two-pipe operation, combines angle and straight design, convertible for right- or left-side connection, radiator supply ratio 30 - 100% (factory default 35%), bypass for stepless adjustment in one-pipe operation, integrated drain valve, easy draining by connecting a standard hose connection, with self-sealing connection nipples and cone inserts for radiators with integrated valve with Rp 1/2" or G 3/4" M (Euro taper) connection, with Euro taper on the pipe side for connection with compression adapters, axial distance 50 mm.

- H-Module with 4 connection options
- Easy filling and draining
- Applicable in one-pipe and two-pipe systems
- Bypass valve can be adjusted comfortably from the front
- Components made of nickel-plated brass
- Sealing materials: EPDM
- Max. operating temp.: 110 °C permanent temperature, 130 °C short-term
- Max. operating pressure: 10 bar

→ Matching compression adapters and assembly accessories available!



Type	Version	Connection			Drain (G)		Article no.
		D	E	F (ET)			
HB UNIVERSAL One-p., Drain	straight and angle	G 1/2" M	G 3/4" F	G 3/4" M	G 3/4" M	1	F10448



Dimensions

Type	Dimensions [mm]							
	A	B	C	H	I	J	K	L (WS)
HB UNIVERSAL One-p., Drain	106	74	41.5	50	22.5	50.5	22.5	30

H-MODULES - PROBLEM SOLVERS

Reverser with Connection Nipples for Reversed Supply and Return Pipes

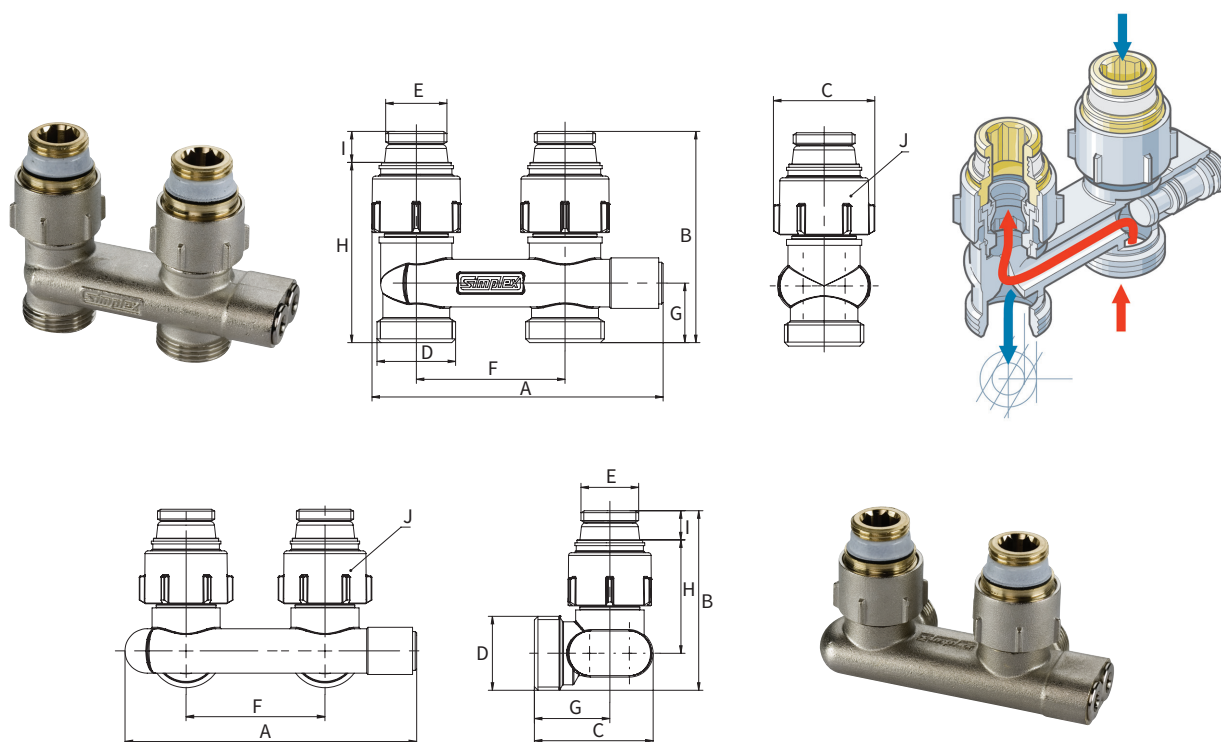
PG = 701

Compact shut-off connection valve for radiators with integrated valve, with Euro taper on the pipe side for connection with compression adapters, 50 mm axial distance.

With self-sealing connection nipples for radiators with integrated valve with Rp 1/2" connection.

- For connections without crossover for reversed supply and return pipes
- Can easily replace a two-pipe H-module
- Components made of nickel-plated brass
- Sealing materials: EPDM
- Max. operating temp.: 110 °C permanent temperature, 130 °C short-term
- Max. operating pressure: 10 bar

→ Matching compression adapters available!



Type	Version	Connection			Article no.
		D (ET)	E		
Reverser D1/50	straight	G 3/4" M	G 1/2" M	1 / 5	F10076
Reverser E1/50	angle	G 3/4" M	G 1/2" M	1 / 5	F10077



Dimensions

Type	Dimensions [mm]							
	A	B	C	F	G	H	I	J (WS)
Reverser D1/50	98	71.0	34.0	50	20	60.6	10.4	30
Reverser E1/50	105	64.5	42.5	50	27	40.6	10.4	30

Reverser with Cone Inserts for Reversed Supply and Return Pipes

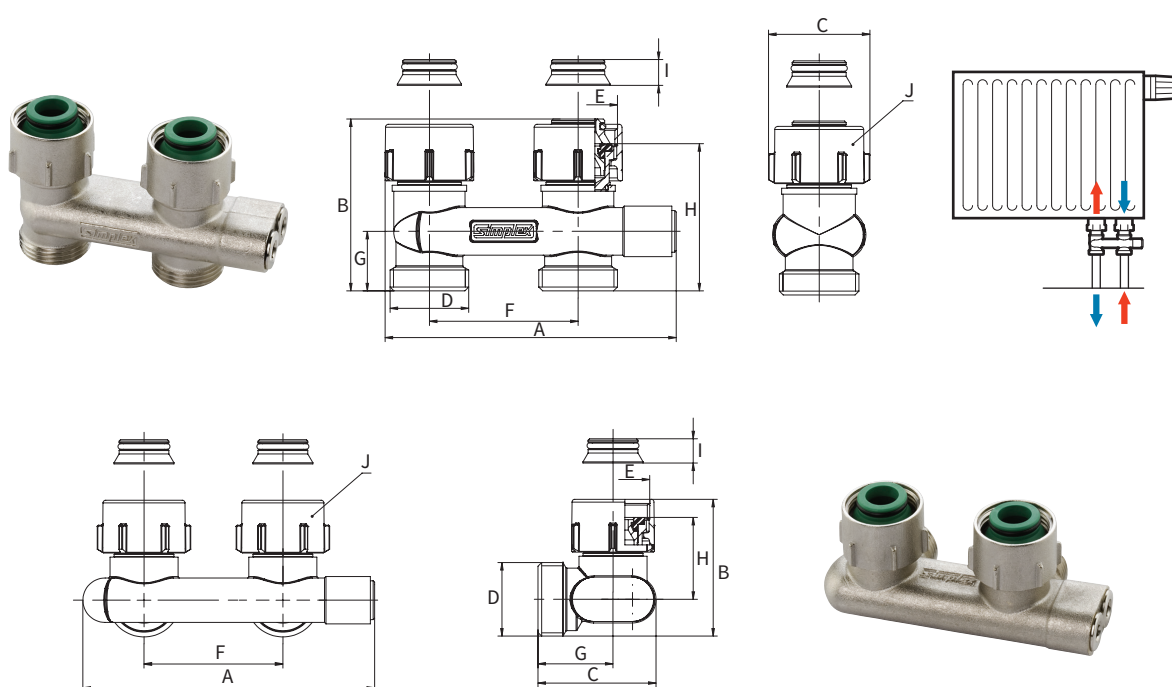
PG = 701

Compact shut-off connection valve for radiators with integrated valve, with Euro taper on the pipe side for connection with compression adapters, 50 mm axial distance.

With cone inserts for radiators with integrated valve with G 3/4" M (Euro taper) connection.

- For connections without crossover for reversed supply and return pipes
- Can easily replace a two-pipe H-module
- Components made of nickel-plated brass
- Sealing materials: EPDM
- Max. operating temp.: 110 °C permanent temperature, 130 °C short-term
- Max. operating pressure: 10 bar

→ Matching compression adapters available!



Type	Version	Connection			Article no.
		D (ET)	E		
Reverser D2/50	straight	G 3/4" M	G 3/4" F	1 / 5	F10078
Reverser E2/50	angle	G 3/4" M	G 3/4" F	1 / 5	F10079



Dimensions

Type	Dimensions [mm]							
	A	B	C	F	G	H	I	J (WS)
Reverser D2/50	98	58	34.0	50	20	49.5	8.7	30
Reverser E2/50	105	49	42.5	50	27	29.5	8.7	30

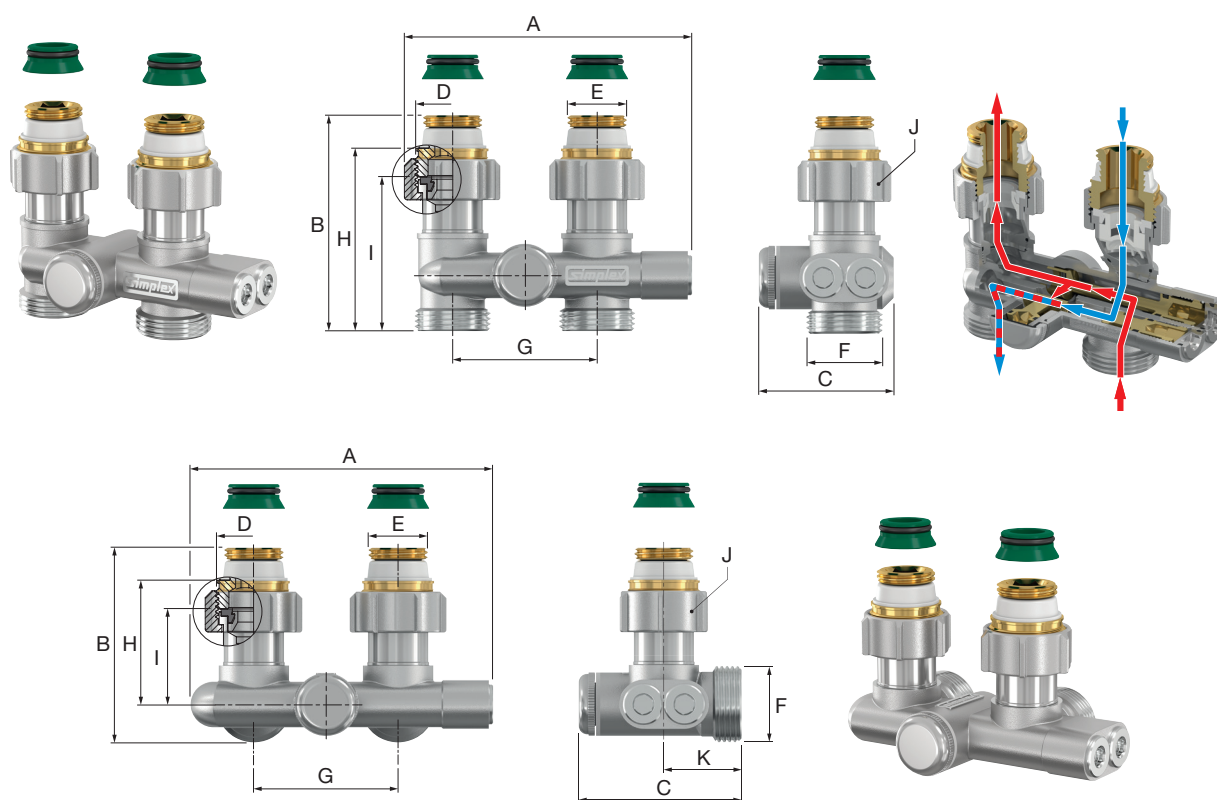
Reverser for One-pipe System for Reversed Supply and Return Pipes


PG = 701

Compact shut-off connection valve for radiators with integrated valve, one-pipe or two-pipe operation possible, radiator supply ratio 30 - 100% (factory default 35%), bypass for stepless adjustment in one-pipe operation, with self-sealing connection nipples and cone inserts for radiators with integrated valve with Rp 1/2" or G 3/4" M (Euro taper) connection, with Euro taper on the pipe side for connection with compression adapters, 50 mm axial distance.

- For connections without crossover for reversed supply and return pipes
- Can easily replace an H-module for one-pipe systems
- Incl. backflow protection to avoid unintentional gravity circulation
- Components made of nickel-plated brass
- Sealing materials: EPDM
- Max. operating temp.: 110 °C permanent temperature, 130 °C short-term
- Max. operating pressure: 10 bar

→ Matching compression adapters available!



Type	Version	Connection		F (ET)		Article no.
		D	E			
Reverser one-pipe D/50	straight	G 3/4" F	G 1/2" M	G 3/4" M	1 / 5	F10465
Reverser one-pipe E/50	angle	G 3/4" F	G 1/2" M	G 3/4" M	1 / 5	F10467



Dimensions

Type	Dimensions [mm]							
	A	B	C	G	H	I	J (WS)	K
Reverser one-pipe D/50	100	75.0	46.5	50	63.4	53.4	30	-
Reverser one-pipe E/50	100	67.6	56.5	50	42.9	32.9	30	27

4-way H-Module with Connection Nipples

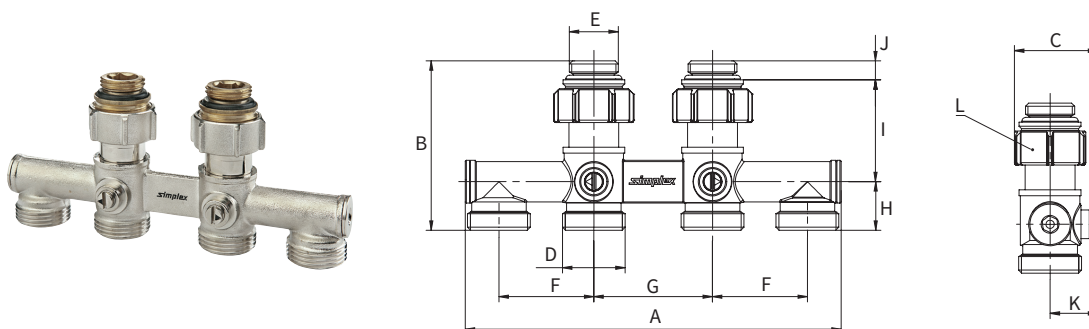
PG = 701

Connection valve for radiators with integrated valve, with 3-way ball shut-off for jointless laying in floors or to connect additional heating surfaces, with position indicator, without stop, with Euro taper on the pipe side for connection with compression adapters, 50 mm axial distance.

With connection nipples with O-ring seal for radiators with integrated valve, with Rp 1/2" connection.

- Components made of nickel-plated brass
- Sealing materials: EPDM, PTFE
- Max. operating temp.: 110 °C permanent temperature, 130 °C short-term
- Max. operating pressure: 10 bar

→ Matching compression adapters available!



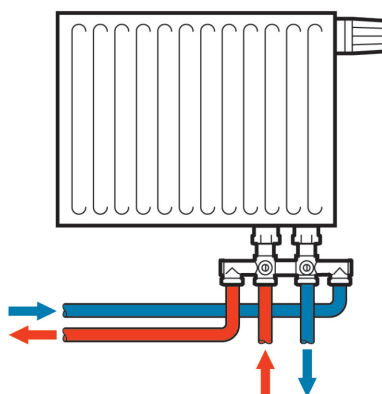
Type	Version	Connection			Article no.
		D (ET)	E		
4-way HB D1	straight	G 3/4" M	G 1/2" M	1 / 5	F10058



Dimensions

Type	Dimensions [mm]									
	A	B	C	F	G	H	I	J	K	L (WS)
4-way HB D1	158.4	71.4	35	40	50	20.5	43	8	20	30

Installation example 4-way H-Module



4-way H-Module with Cone Inserts

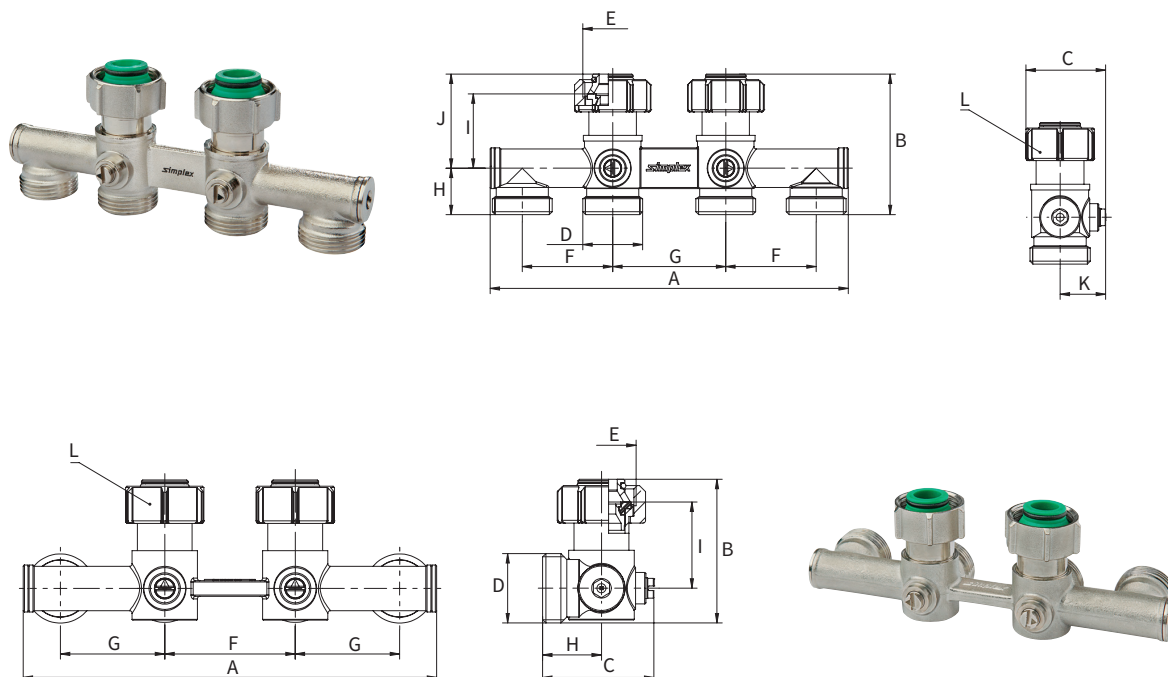
PG = 701

Connection valve for radiators with integrated valve, with 3-way ball shut-off for jointless laying in floors or to connect additional heating surfaces, with position indicator, without stop, with Euro taper on the pipe side for connection with compression adapters, 50 mm axial distance.

With cone inserts for radiators with integrated valve with G 3/4" M (Euro taper) connection.

- Components made of nickel-plated brass
- Sealing materials: EPDM, PTFE
- Max. operating temp.: 110 °C permanent temperature, 130 °C short-term
- Max. operating pressure: 10 bar

→ **Matching compression adapters available!**



Type	Version	Connection			Article no.
		D (ET)	E		
4-way HB D2	straight	G 3/4" M	G 3/4" F	1 / 5	F10059
4-way HB E2	angle	G 3/4" M	G 3/4" F	1 / 5	F10449



Dimensions

Type	Dimensions [mm]									
	A	B	C	F	G	H	I	J	K	L (WS)
4-way HB D2	158.4	62	35.0	40	50	20.5	33	41.6	20	30
4-way HB E2	158.4	55	42.5	50	40	22.5	33	-	-	30

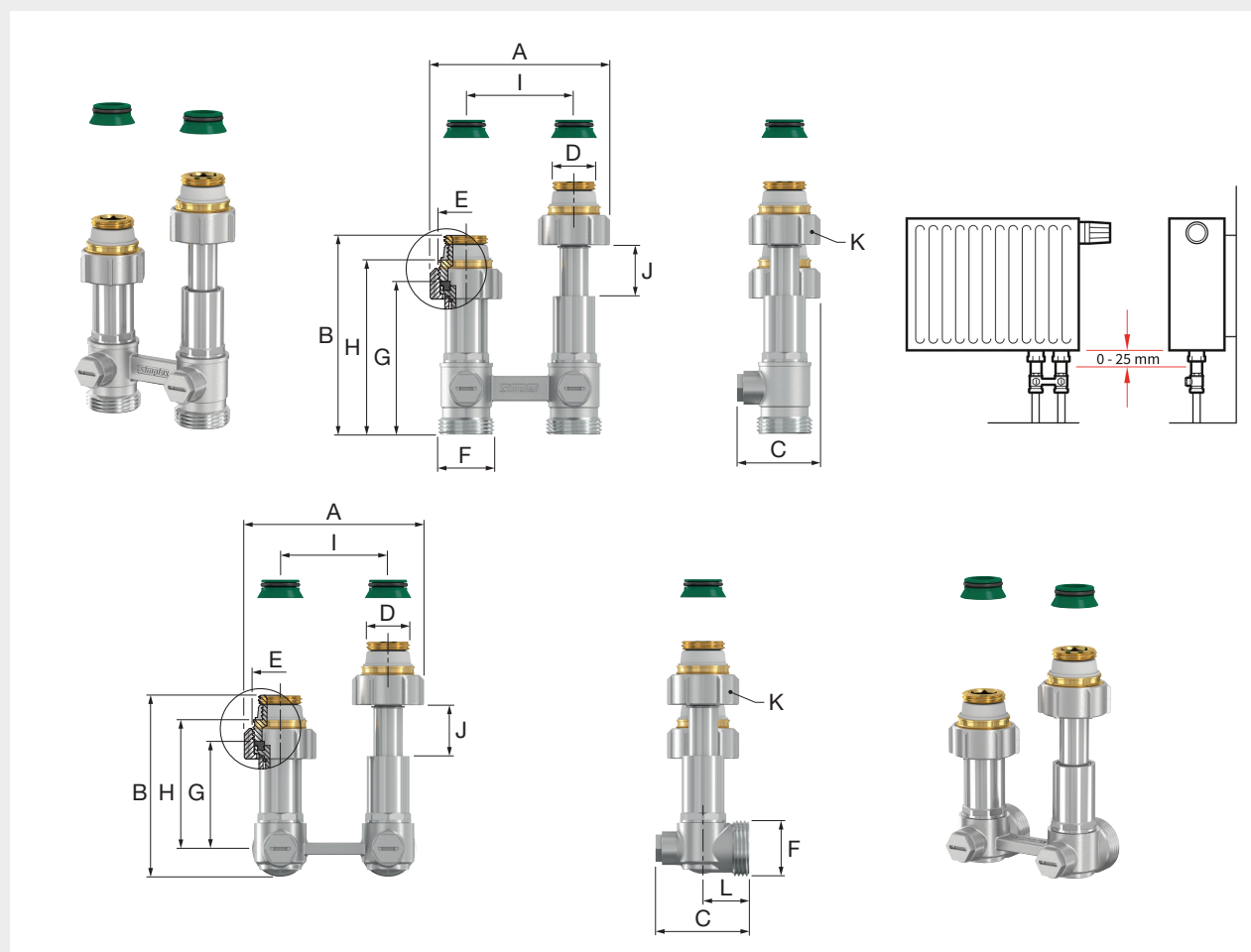
EXCLUSIV H-Module with Telescope Adjustment


PG = 701

Telescopic connection valve with up to 25 mm height adjustment for radiators with integrated valve, with ball shut-off, control head with a concealed stop, with self-sealing connection nipples and cone inserts for radiators with integrated valve with $R_p \frac{1}{2}"$ or $G \frac{3}{4}"$ M (Euro taper) connection, with Euro taper on the pipe side for connection with compression adapters, 50 mm axial distance.

- Components made of nickel-plated brass
- Sealing materials: EPDM, PTFE
- Max. operating temp.: 110 °C permanent temperature, 130 °C short-term
- Max. operating pressure: 10 bar

→ Matching compression adapters and assembly accessories available!



Type	Version	Connection				Article no.
		D	E	F (ET)		
HB w. Telescope DT/50	straight	$G \frac{1}{2}"$ M	$G \frac{3}{4}"$ F	$G \frac{3}{4}"$ M	1 / 5	F10084
HB w. Telescope ET/50	angle	$G \frac{1}{2}"$ M	$G \frac{3}{4}"$ F	$G \frac{3}{4}"$ M	1 / 5	F10086



Dimensions

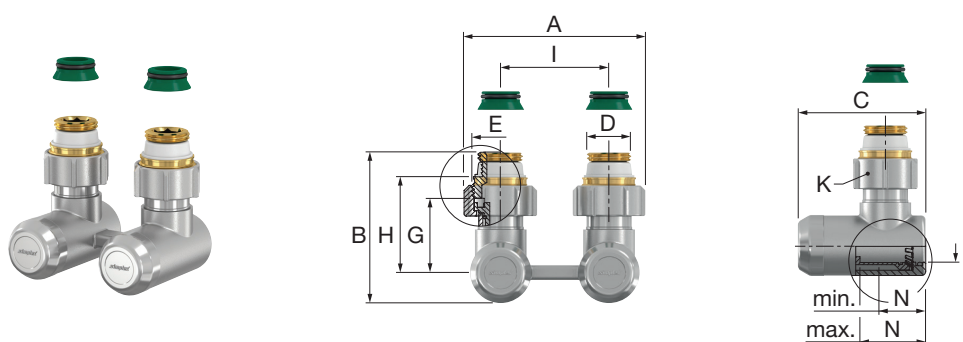
Type	Dimensions [mm]							
	A	B	C	G	H	I	J (max.)	K (WS)
HB w. Telescope DT/50	83.7	92.7	39.0	49.7	59.7	50	25	30
HB w. Telescope ET/50	83.7	84.5	43.9	49.7	59.7	50	25	30

MULTIGRIP H-Module

PG = 701

Connection valve for radiators with integrated valve, integrated screw connection with depth adjustment (13 mm), spindle shut-off with stop, for copper, stainless steel and carbon steel pipes, with self-sealing connection nipples and cone inserts for radiators with integrated valve with Rp 1/2" or G 3/4" M (Euro taper) connection, 50 mm axial distance.

- Compression adapter is not needed for installation
- Quick and easy installation - pipes are simply inserted into the valve and locked with spanner 13 mm
- Connection can be released at any time with little effort
- Reusable
- Components made of nickel-plated brass
- Sealing materials: EPDM
- Max. operating temp.: 110 °C permanent temperature, 130 °C short-term
- Max. operating pressure: 10 bar



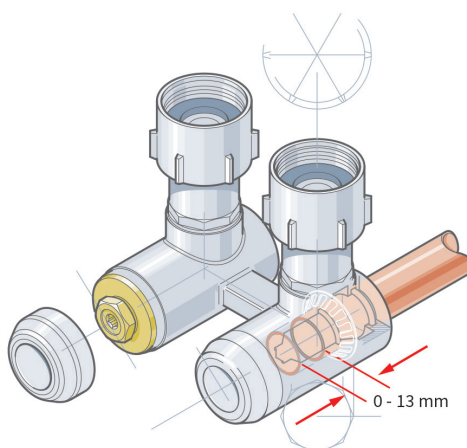
Type	Version	D	Connection	E	F (Ø) [mm]		Article no.
HB MULTIGRIP	angle	G 1/2" M	G 3/4" F		15	1 / 5	F13424



Dimensions

Type	Dimensions [mm]								
	A	B	C	G	H	I	K (WS)	N (min.)	N (max.)
HB MULTIGRIP	84	70	59	34	45.1	50	30	13	31.6

MULTIGRIP H-Module - up to 13 mm depth adjustment

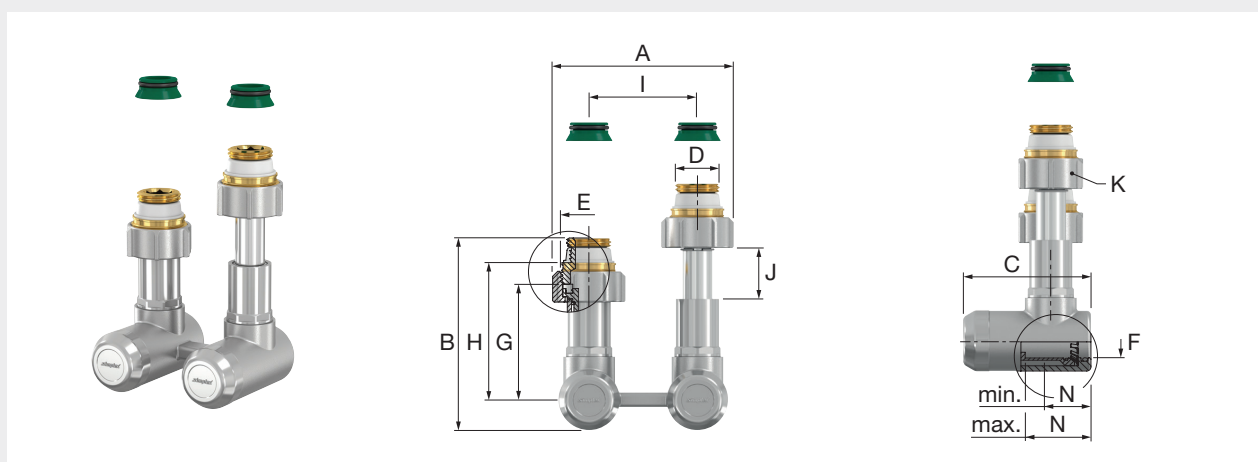


MULTIGRIP H-Module with Telescope Adjustment

PG = 701

Telescopic connection for radiators with integrated valve, with up to 25 mm height adjustment, integrated screw connection with depth adjustment (13 mm), spindle shut-off with stop, for copper, stainless steel and carbon steel pipes, with self-sealing connection nipples and cone inserts for radiators with integrated valve with Rp 1/2" or G 3/4" M (Euro taper) connection, 50 mm axial distance.

- Compression adapter is not needed for installation
- Quick and easy installation - pipes are simply inserted into the valve and locked with spanner 13 mm
- Connection can be released at any time with little effort
- Reusable
- Components made of nickel-plated brass
- Sealing materials: EPDM
- Max. operating temp.: 110 °C permanent temperature, 130 °C short-term
- Max. operating pressure: 10 bar



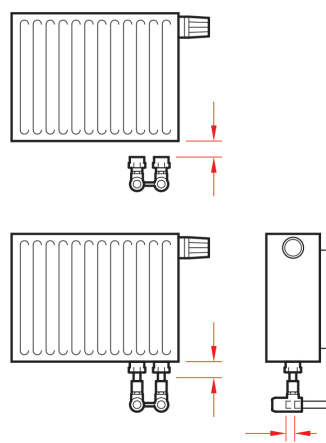
Type	Version	Connection				Article no.
		D	E	F (Ø) [mm]		
HB MULTIGRIP w. Telescope	angle	G 1/2" M	G 3/4" F	15	1 / 5	F13444

Dimensions



Type	Dimensions [mm]									
	A	B	C	G	H	J (max.)	I	K (WS)	N (min.)	N (max.)
HB MULTIGRIP w. Telescope	84	89.3	59	53.4	63.4	25	50	30	13	31.6

Up to 13 mm depth adjustment and up to 25 mm height adjustment



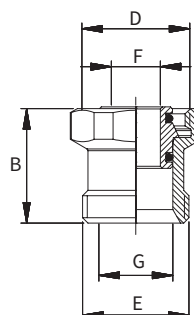
CONNECTION ACCESSORIES


- Components made of nickel-plated brass
- Sealing materials: EPDM
- Max. operating temp.: 110 °C permanent temperature, 130 °C short-term
- Max. operating pressure: 10 bar

Extension G 3/4" Euro Taper

PG = 701

20 mm extension, for the Euro taper connection situation in accordance with DIN 16313 on radiator connection fittings, including H-modules, thermostatic valve bodies, lockshield valves etc.



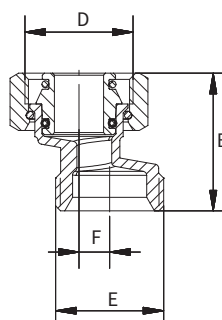
Type	Connection		Dimensions [mm]				Article no.
	D	E (ET)	B	F	G (Ø)		
Extension ET	G 3/4" F	G 3/4" M	28	12	18	2 / 10	F22165




Compensation for G 3/4" Euro Taper

PG = 701

S-piece for use in heating systems, 35 mm total height, 7.5 mm offset, with union nut.



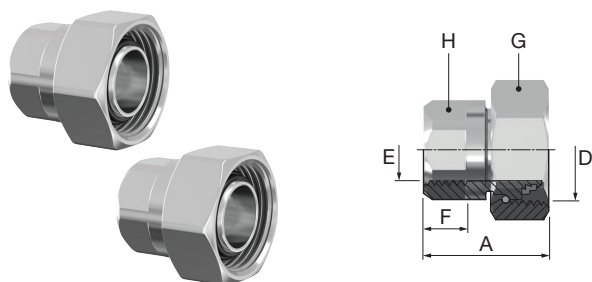
Type	Connection		Dimensions [mm]			Article no.
	D	E (ET)	B	F		
Compensation ET	G 3/4" F	G 3/4" M	34	7.5	5	F10530




G5 Connection Set

PG = 701

2 pcs. screw connections for use in heating systems.



Type	Connection		Dimensions					 [Set]	Article no.
	D (ET)	E	A	B	F	G (WS)	H (WS)		
Conn. Set G5 - 3/8	G 3/4" F	G 3/8" F	30.2	33.7	10	30	22	1 / 50	F10369
Conn. Set G5 - 1/2	G 3/4" F	G 1/2" F	31.9	33.7	12	30	27	1 / 50	F10370



THERMOSTATIC VALVES

VARIODESIGN Regulator Valve

PG = 720

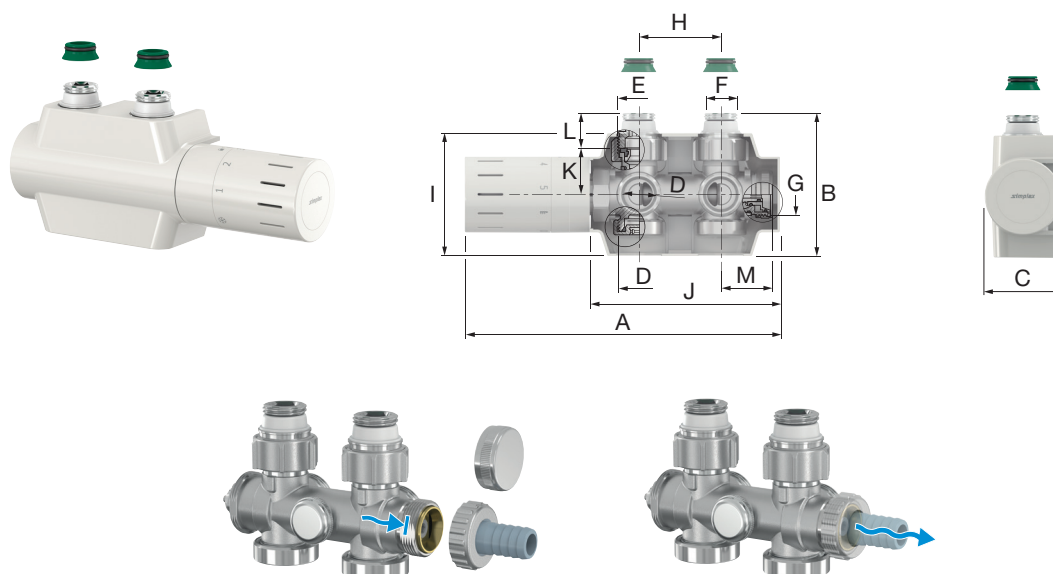
Set consisting of:

1 pc. connection valve with shut-off and pre-adjustable valve insert for towel and design radiators, connection thread to the thermostatic head M 30 x 1.5, combines angle and straight design, convertible for right- or left-side connection, integrated fill and drain valve for hose connections, with self-sealing connection nipples and cone inserts for towel and design radiators with Rp 1/2" or G 3/4" M (Euro taper) connection, with Euro taper on the pipe side for connection with compression adapters, axial distance 50 mm, with adjustment key,

1 pc. design cover made of plastic with polished optics,

1 pc. design thermostic head with integrated liquid sensor, threaded connection M 30 x 1.5, setpoint value: 7 - 28 °C, with zero position and frost protection, non-rising, white version classified according to "TELL-Thermostatic Efficiency-Label" in energy efficiency class I.

- Attractive design
- 4 connection options
- Simple filling and draining
- Components made of nickel-plated brass and plastic
- Sealing materials: EPDM
- Max. operating temp.: 110 °C permanent temperature, 130 °C short-term
- Max. operating pressure: 10 bar



Type	Colour	Version	Connection			Drain (G)		Article no.
			D (ET)	E	F			
VH VARIODESIGN W	white*	connection right/left convertible	G 3/4" M	G 3/4" F	G 1/2" M	G 3/4" M	1	F12160
VH VARIODESIGN C	chromed	connection right/left convertible	G 3/4" M	G 3/4" F	G 1/2" M	G 3/4" M	1	F12161

* similar to RAL 9016



Dimensions

Type	Dimensions [mm]								
	A	B	C	H	I	J	K	L	M
VH VARIODESIGN W	191	87	48	50	75	115.5	28	21.5	31
VH VARIODESIGN C	191	87	48	50	75	115.5	28	21.5	31

VARIODESIGN Regulator Valve for One-pipe System

PG = 720

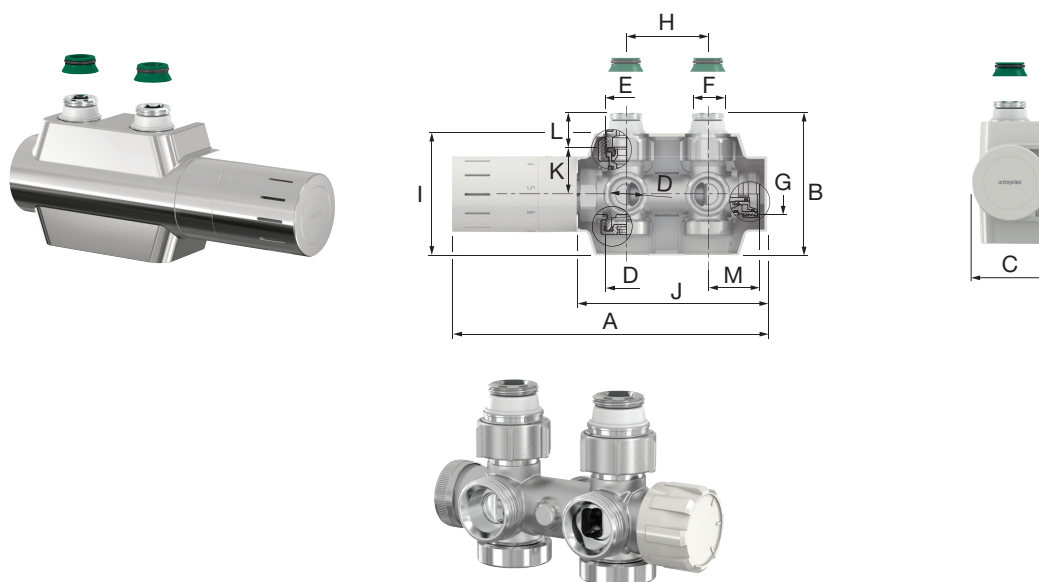
Set consisting of:


1 pc. connection valve with shut-off and pre-adjustable valve insert for towel and design radiators, one-pipe or two-pipe operation possible, radiator supply ratio 30 - 100% (factory default 35%), bypass for stepless adjustment in one-pipe operation, connection thread to the thermostatic head M 30 x 1.5, combines angle and straight design, convertible for right- or left-side connection, integrated fill and drain valve for hose connections, with self-sealing connection nipples and cone inserts for towel and design radiators with Rp 1/2" or G 3/4" M (Euro taper) connection, with Euro taper on the pipe side for connection with compression adapters, axial distance 50 mm, with adjustment key,

1 pc. design cover made of plastic with polished optics,

1 pc. design thermostatic head with integrated liquid sensor, threaded connection M 30 x 1.5, setpoint value: 7 - 28 °C, with zero position and frost protection, non-rising, white version classified according to "TELL-Thermostatic Efficiency-Label" in energy efficiency class I.

- 4 connection options
- For one-pipe or two-pipe operation
- Bypass valve can be easily adjusted from the front
- Components made of nickel-plated brass and plastic
- Sealing materials: EPDM
- Max. operating temp.: 110 °C permanent temperature, 130 °C short-term
- Max. operating pressure: 10 bar



Type	Colour	Version	Connection			Drain (G)		Article no.
			D (ET)	E	F			
VH one-pipe VARIODESIGN W	white*	connection right/left convertible	G 3/4" M	G 3/4" F	G 1/2" M	G 3/4" M	1	F12165
VH one-pipe VARIODESIGN C	chromed	connection right/left convertible	G 3/4" M	G 3/4" F	G 1/2" M	G 3/4" M	1	F12166

* similar to RAL 9016



Dimensions

Type	Dimensions [mm]								
	A	B	C	H	I	J	K	L	M
VH one-pipe VARIODESIGN W	191	87	48	50	75	115.5	28	21.5	31
VH one-pipe VARIODESIGN C	191	87	48	50	75	115.5	28	21.5	31

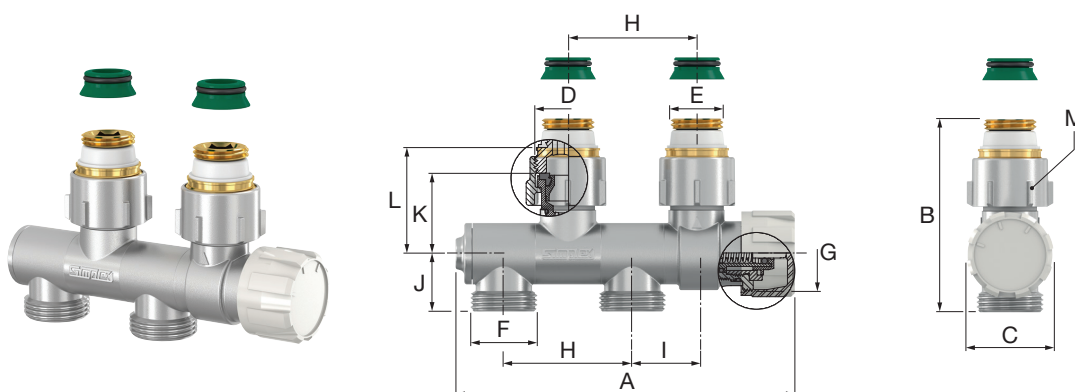
VARIOCON Swivelling Regulator Valve


PG = 701

Connection valve with shut-off and pre-adjustable valve insert for towel and design radiators, swivelling connections on the pipe side for angle or straight connection, left or right-side connection, connection thread to the thermostatic head M 30 x 1.5, with self-sealing connection nipples and cone inserts for towel and design radiators with Rp 1/2" or G 3/4" M (Euro taper) connection, with Euro taper on the pipe side for connection with compression adapters, axial distance 50 mm, axial offset 25 mm, with adjustment key, without thermostatic head.

- Continuously swivelling connects for a flexible installation
- 4 connection options
- Components made of nickel-plated brass
- Sealing materials: EPDM
- Max. operating temp.: 110 °C permanent temperature, 130 °C short-term
- Max. operating pressure: 10 bar

→ Matching design covers and compression adapters available!



Type	Version	Connection					Article no.
		D	E	F (ET)	G		
VH VARIOCON	connection right or left	G 3/4" F	G 1/2" M	G 3/4" M	M 30 x 1.5	1 / 25	F12020



Dimensions

Type	Dimensions [mm]								
	A	B	C	H	I	J	K	L	M (WS)
VH VARIOCON	132	75	34	50	25	22.5	31	41	30

VARIOCON Swivelling Regulator Valve with Electro-thermal Actuator

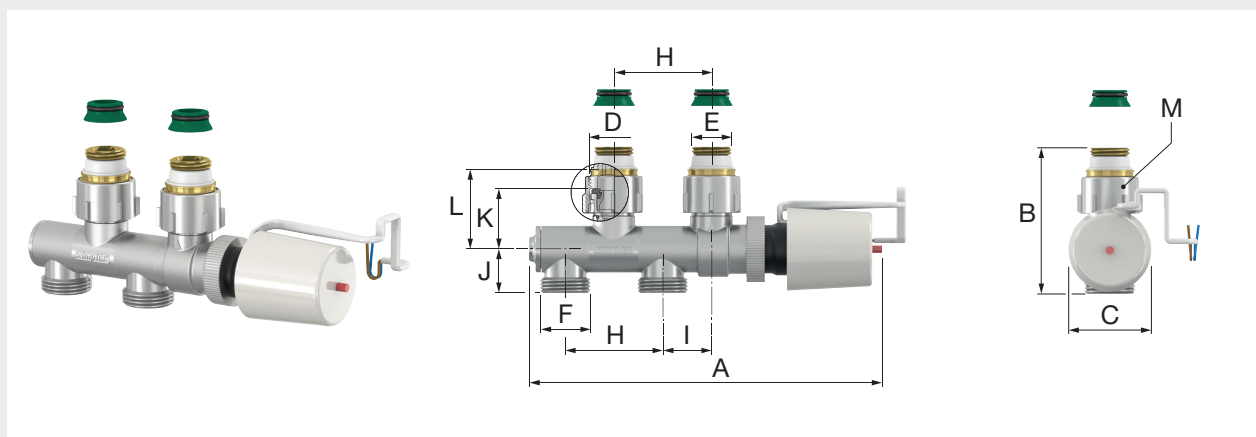
PG = 701

Connection valve with shut-off and pre-adjustable valve insert for towel and design radiators, swivelling connections on the pipe side for angle or straight connection, left or right-side connection, connection thread to the thermostatic head M 30 x 1.5, with self-sealing connection nipples and cone inserts for towel and design radiators with Rp 1/2" or G 3/4" M (Euro taper) connection, with Euro taper on the pipe side for connection with compression adapters, axial distance 50 mm, axial offset 25 mm, with adjustment key, without thermostatic head.

With actuator, closed without current, 230 V, opening/closing time 3 - 4 min., connection cable length 1 m.

- Continuously swivelling connections for a flexible installation
- 4 connection options
- Components made of nickel-plated brass
- Sealing materials: EPDM
- Max. operating temp.: 110 °C permanent temperature, 130 °C short-term
- Max. operating pressure: 10 bar

→ Matching design covers and compression adapters available!



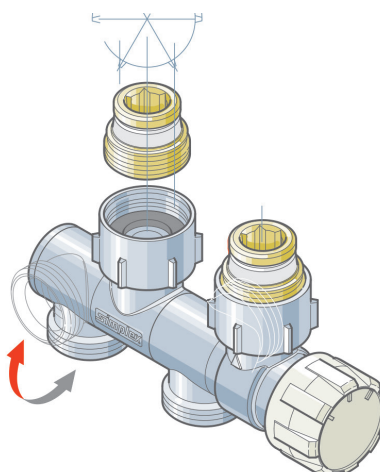
Type	Version	Connection				Article no.
		D	E	F (ET)		
VH VARIOCON STA	connection right or left	G 3/4" F	G 1/2" M	G 3/4" M	1 / 25	F12018

Dimensions



Type	Dimensions [mm]								
	A	B	C	H	I	J	K	L	M (WS)
VH VARIOCON STA	181	75	42.5	50	25	22.5	31	41	30

VARIOCON connection valves: continuously swivelling connections for a flexible installation



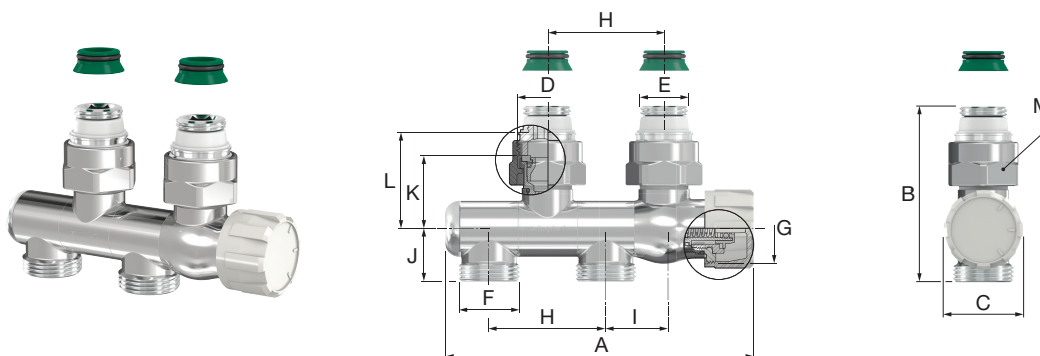
VARIOCON Swivelling Design Regulator Valve


PG = 720

Connection valve with shut-off and pre-adjustable valve insert for towel and design radiators, swivelling connections on the pipe side for angle or straight connection, left or right-side connection, connection thread to the thermostatic head M 30 x 1.5, with self-sealing connection nipples and cone inserts for towel and design radiators with Rp 1/2" or G 3/4" M (Euro taper) connection, with Euro taper on the pipe side for connection with compression adapters, axial distance 50 mm, axial offset 25 mm, with adjustment key, without thermostatic head.

- Continuously swivelling connects for a flexible installation
- 4 connection options
- Components made of high gloss chrome-plated brass
- Sealing materials: EPDM
- Max. operating temp.: 110 °C permanent temperature, 130 °C short-term
- Max. operating pressure: 10 bar

→ **Matching chrome-plated compression adapters available!**



Type	Version	Connection					Article no.
		D	E	F (ET)	G		
VH VARIOCON Chrome	connection right or left	G 3/4" F	G 1/2" M	G 3/4" M	M 30 x 1.5	1	F12019



Dimensions

Type	Dimensions [mm]								
	A	B	C	H	I	J	K	L	M (WS)
VH VARIOCON Chrome	132	75	34	50	25	22.5	31	41	30

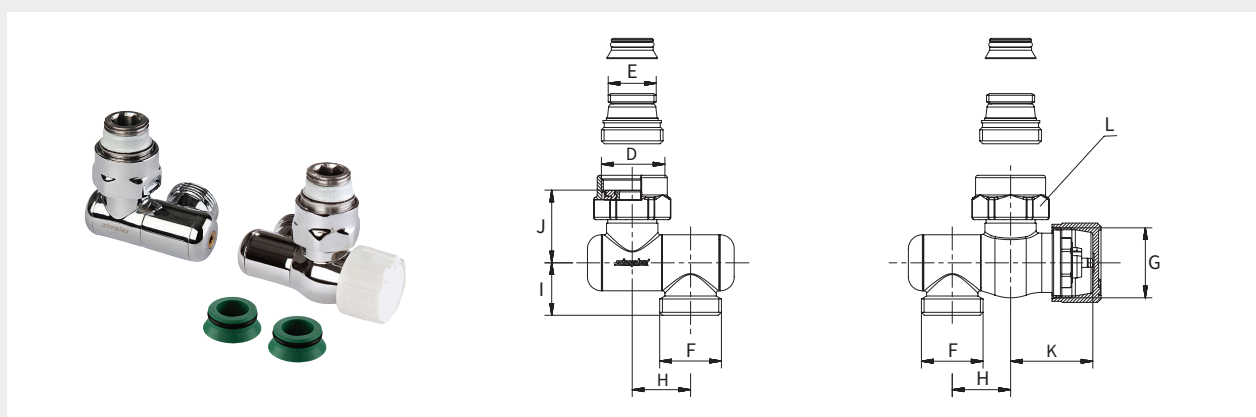
VARIOCON Swivelling Design Regulator Valve Kit


PG = 720

Connection valve kit with shut-off and pre-adjustable valve insert for towel and design radiators, swivelling connections on the pipe side for angle or straight connection, left or right-side connection, connection thread to the thermostatic head M 30 x 1.5, with self-sealing connection nipples and cone inserts for towel and design radiators with Rp 1/2" or G 3/4" M (Euro taper) connection, with Euro taper on the pipe side for connection with compression adapters, axial distance 50 mm, axial offset 25 mm, with adjustment key, without thermostatic head.

- Continuously swivelling connections for a flexible installation
- 4 connection options
- Components made of high gloss chrome-plated brass
- Sealing materials: EPDM
- Max. operating temp.: 110 °C permanent temperature, 130 °C short-term
- Max. operating pressure: 10 bar

→ Matching chrome-plated compression adapters available!



Type	Version	Connection					Article no.
		D	E	F (ET)	G		
VG 2-pcs. VARIOCON Chrome	connection right or left	G 3/4" F	G 1/2" M	G 3/4" M	M 30 x 1.5	1	F12016



Dimensions

Type	Dimensions [mm]				
	H	I	J	K	L (WS)
VG 2-pcs. VARIOCON Chrome	25	22.5	31	35	30

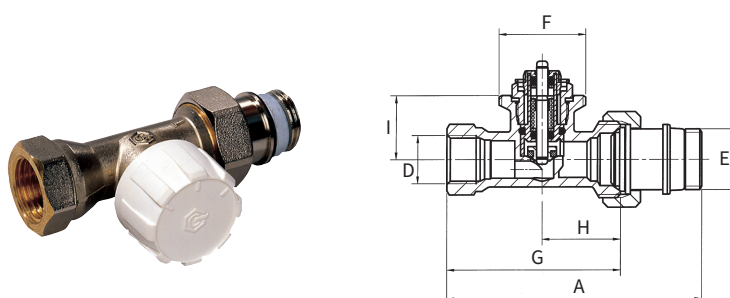
THERMOSTATIC VALVE BODIES


- Components made of nickel-plated brass
- Sealing materials: EPDM
- Max. operating temperature: 120 °C, lance valves and connection sets: 110 °C
- Max. operating pressure: 10 bar
- CEN tested and certified according to DIN EN 215
- Valve insert replaceable using disassembly device
- Socket threaded union in the housing soft-sealing and to the radiators self-sealing with special thread seal
- The thermostatic valve bodies with continuous pre-adjustment facilitate hydraulic balancing

Thermostatic Valve Body - Straight Shape

PG = 606

Thermostatic valve body for two-pipe heating systems, with continuous pre-adjustment, EN 215-D, protection cap white.



Type	Nom. dia-meter	Kvs [m³/h]	Connection			Dimensions [mm]					Article no.
			D	E	F	A	G	H	I		
TVU S721.11 - DN10	DN 10	1.0	Rp 3/8"	G 1/2" M	M 30 x 1.5	88*	60	27	22	20	F34000
TVU S721.11 - DN15	DN 15	1.0	Rp 1/2"	G 1/2" M	M 30 x 1.5	95*	66	29	22	20	F34001
TVU S721.11 - DN20	DN 20	1.27	Rp 3/4"	G 3/4" M	M 30 x 1.5	105	74	34	22	20	F34002

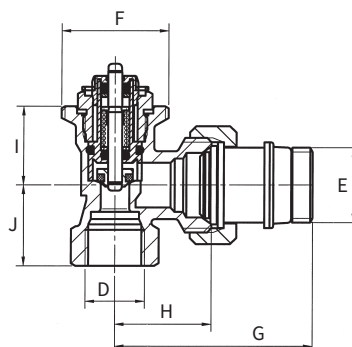
* TELL




Thermostatic Valve Body - Angle Shape

PG = 606

Thermostatic valve body for two-pipe heating systems, with continuous pre-adjustment, EN 215-D, protection cap white.



Type	Nom. dia-meter	Kvs [m³/h]	Connection			Dimensions [mm]					Article no.
			D	E	F	G	H	I	J		
TVU S722.11 - DN10	DN 10	1.0	Rp 3/8"	G 1½" M	M 30 x 1.5	55*	22.5	22	27	20	F34003
TVU S722.11 - DN15	DN 15	1.0	Rp ½"	G ½" M	M 30 x 1.5	58*	27.5	22	29	20	F34004
TVU S722.11 - DN20	DN 20	1.27	Rp ¾"	G ¾" M	M 30 x 1.5	65	30.0	22	34	20	F34005

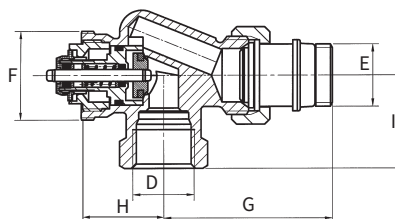
* TELL




Thermostatic Valve Body - Axial Shape

PG = 606

Thermostatic valve body for two-pipe heating systems, with continuous pre-adjustment, EN 215-D, protection cap white.



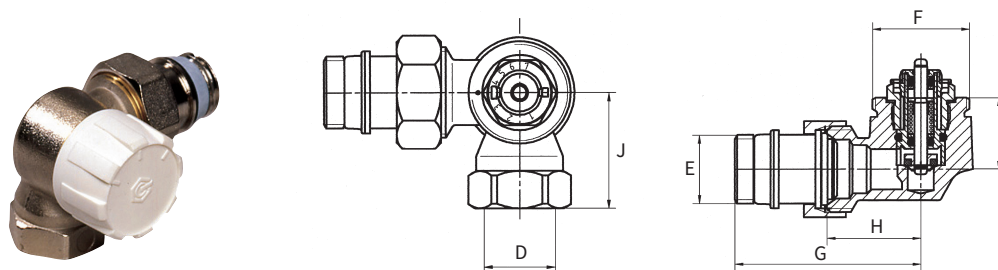
Type	Nom. diame- ter	Kvs [m³/h]	Connection			Dimensions [mm]				Article no.
			D	E	F	G	H	I		
TVU S726.11 - DN15	DN 15	0.64	Rp 1/2"	G 1/2" M	M 30 x 1.5	57.5	28	31.5	20	F34008




Thermostatic Valve Body - Double-angle Shape Left

PG = 606

Thermostatic valve body for two-pipe heating systems, with continuous pre-adjustment, EN 215-D, protection cap white.



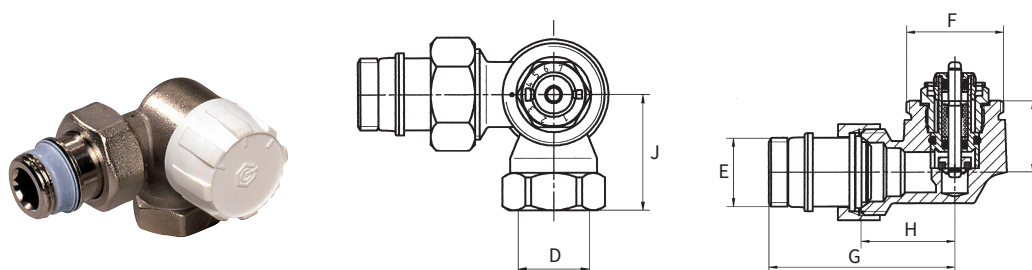
Type	Nom. diameter	Kvs [m³/h]	Connection			Dimensions [mm]					Article no.
			D	E	F	G	H	I	J		
TVU S724.11 - DN15	DN 15	1.0	Rp 1/2"	G 1/2" M	M 30 x 1.5	57.5	29	22	33	20	F34015




Thermostatic Valve Body - Double-angle Shape Right

PG = 606

Thermostatic valve body for two-pipe heating systems, with continuous pre-adjustment, EN 215-D, protection cap white.



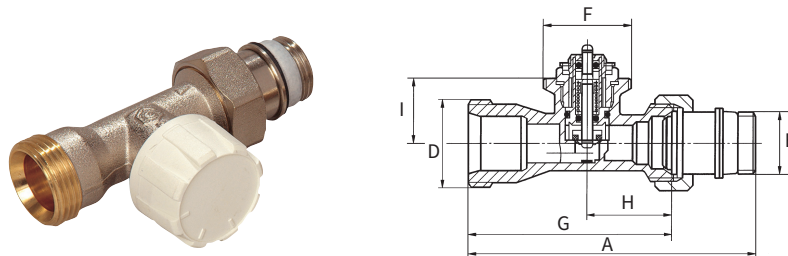
Type	Nom. diameter	Kvs [m³/h]	Connection			Dimensions [mm]					Article no.
			D	E	F	G	H	I	J		
TVU S725.11 - DN15	DN 15	1.0	Rp 1/2"	G 1/2" M	M 30 x 1.5	57.5	29	22	33	20	F34016



Thermostatic Valve Body - G 3/4" Euro Taper, Straight Shape

PG = 606

Thermostatic valve body for two-pipe heating systems, with continuous pre-adjustment, EN 215-D, protection cap white.



Type	Nom. diameter	Kvs [m³/h]	Connection			Dimensions [mm]						Article no.
			D (ET)	E	F	A	G	H	I			
TVU S721.12 - DN15	DN 15	1.0	G 3/4" M	G 1/2" M	M 30 x 1.5	95*	66	39	22	20		F34006

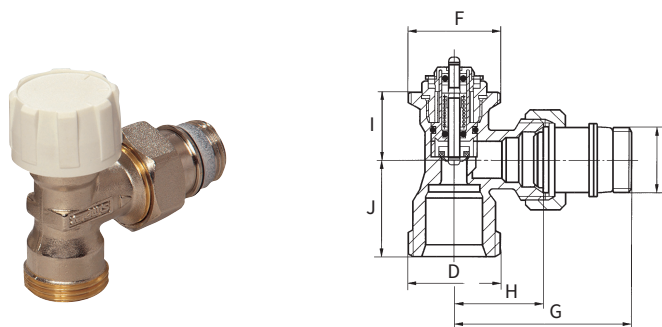
* TELL



Thermostatic Valve Body - G 3/4" Euro Taper, Angle Shape

PG = 606

Thermostatic valve body for two-pipe heating systems, with continuous pre-adjustment, EN 215-D, protection cap white.



Type	Nom. diameter	Kvs [m³/h]	Connection			Dimensions [mm]						Article no.
			D (ET)	E	F	G	H	I	J			
TVU S722.12 - DN15	DN 15	1.0	G 3/4" M	G 1/2" M	M 30 x 1.5	58*	29	22	27.5	20		F34007

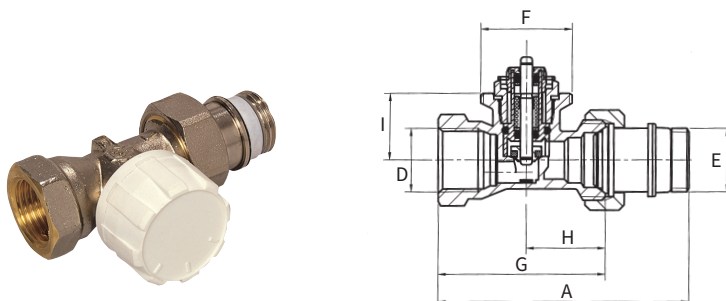
* TELL




Thermostatic Valve Body - Short Design, Straight Shape

PG = 606

Thermostatic valve body for two-pipe heating systems, with continuous pre-adjustment, EN 215-F (French standard), protection cap white.



Type	Nom. diameter	Connection			Dimensions [mm]					Article no.
		D	E	F	A	G	H	I		
TVU Fr721.11 - DN10	DN 10	Rp 3/8"	G 1/2" M	M 30 x 1.5	75*	50.0	24	22	20	F34009
TVU Fr721.11 - DN15	DN 15	Rp 1/2"	G 1/2" M	M 30 x 1.5	83*	55.0	26	22	20	F34011
TVU Fr721.11 - DN20	DN 20	Rp 3/4"	G 3/4" M	M 30 x 1.5	97	65.5	30	22	20	F34013

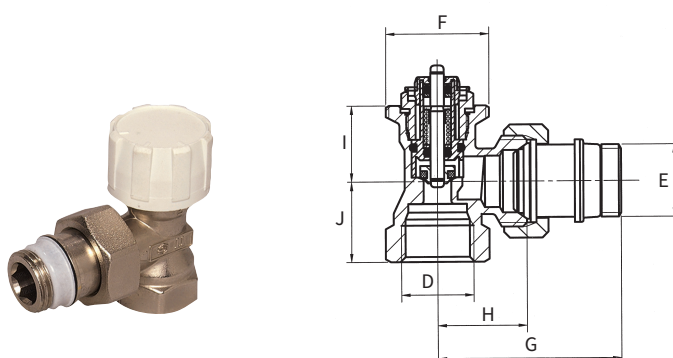
* TELL




Thermostatic Valve Body - Short Design, Angle Shape

PG = 606

Thermostatic valve body for two-pipe heating systems, with continuous pre-adjustment, EN 215-F (French standard), protection cap white.



Type	Nom. diameter	Connections			Dimensions [mm]					Article no.
		D	E	F	G	H	I	J		
TVU Fr722.11 - DN10	DN 10	Rp 3/8"	G 1/2" M	M 30 x 1.5	49*	24	22	20.5	20	F34010
TVU Fr722.11 - DN15	DN 15	Rp 1/2"	G 1/2" M	M 30 x 1.5	54*	26	22	23.5	20	F34012
TVU Fr722.11 - DN20	DN 20	Rp 3/4"	G 3/4" M	M 30 x 1.5	61.5	30	22	26.0	20	F34014

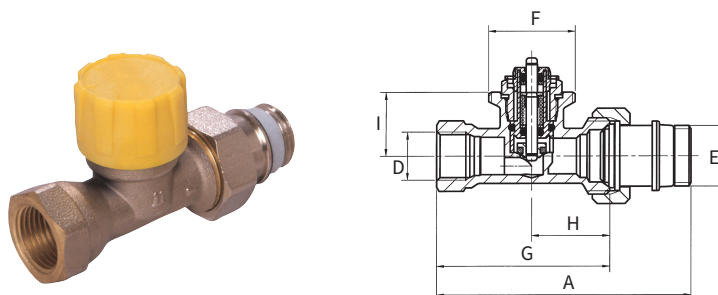
* TELL




Thermostatic Valve Body - With Fine Pre-adjustment, Straight Shape

PG = 606

Thermostatic valve body for two-pipe heating systems, with continuous fine pre-adjustment, EN 215-D, protection cap yellow.



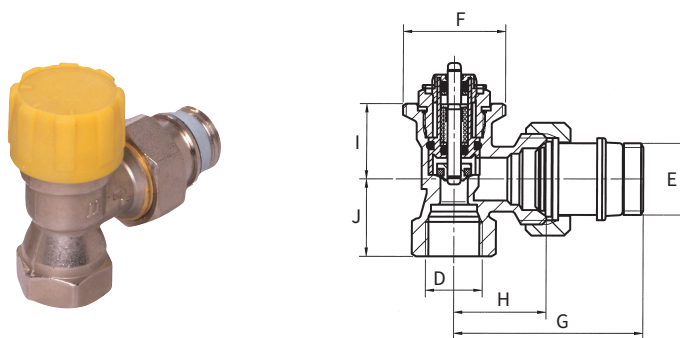
Type	Nom. dia-meter	Kvs [m³/h]	Connection			Dimensions [mm]					Article no.
			D	E	F	A	G	H	I		
TVU S721.41 - DN10	DN 10		Rp 3/8"	G 1/2" M	M 30 x 1.5	88	60	27	22	20	F34017
TVU S721.41 - DN15	DN 15		Rp 1/2"	G 1/2" M	M 30 x 1.5	95	66	29	22	20	F34018




Thermostatic Valve Body - With Fine Pre-adjustment, Angle Shape

PG = 606

Thermostatic valve body for two-pipe heating systems, with continuous fine pre-adjustment, EN 215-D, protection cap yellow.



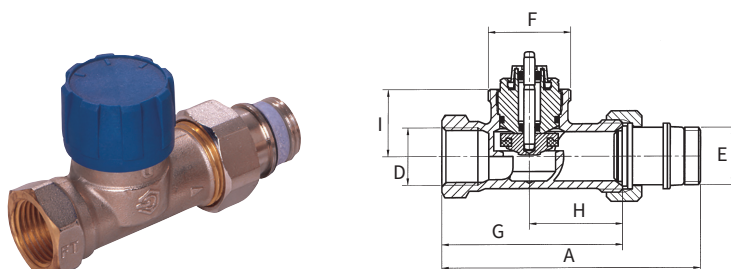
Type	Nom. dia-meter	Kvs [m³/h]	Connection			Dimensions [mm]					Article no.
			D	E	F	G	H	I	J		
TVU S722.41 - DN15	DN 15	0.53	Rp 1/2"	G 1/2" M	M 30 x 1.5	58	27.5	22	29	20	F34019




Thermostatic Valve Body - With Extended Flow Coefficient, Straight Shape

PG = 606

Thermostatic valve body for two-pipe heating systems, without pre-adjustment, with extended flow coefficient, EN 215-D, protection cap blue.



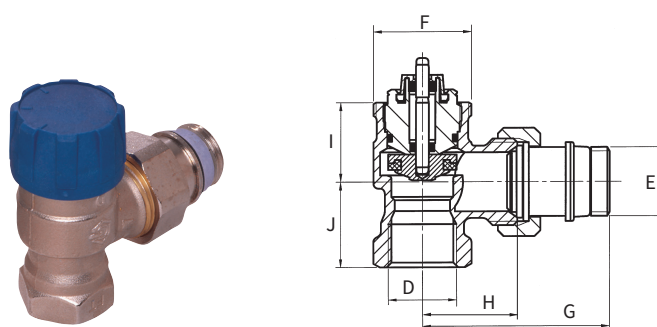
Type	Nom. dia-meter	Kvs [m³/h]	Connection			Dimensions [mm]					Article no.
			D	E	F	A	G	H	I		
TVU S721.51 - DN15	DN 15	2.7	Rp 1/2"	G 1/2" M	M 30 x 1.5	95	66	29	22	20	F34020
TVU S721.51 - DN20	DN 20	3.1	Rp 3/4"	G 3/4" M	M 30 x 1.5	105	74	34	22	20	F34021




Thermostatic Valve Body - With Extended Flow Coefficient, Angle Shape

PG = 606

Thermostatic valve body for two-pipe heating systems, without pre-adjustment, with extended flow coefficient, EN 215-D, protection cap blue.



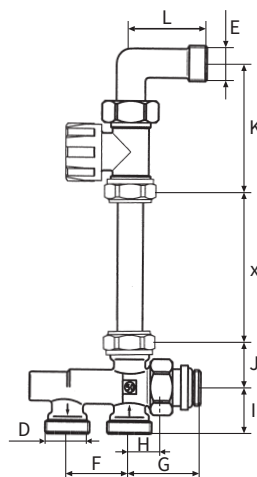
Type	Nom. dia-meter	Kvs [m³/h]	Connection			Dimensions [mm]					Article no.
			D	E	F	G	H	I	J		
TVU S722.51 - DN15	DN 15	2.7	Rp 1/2"	G 1/2" M	M 30 x 1.5	58	29	22	27.5	20	F34022
TVU S722.51 - DN20	DN 20	3.1	Rp 3/4"	G 3/4" M	M 30 x 1.5	65	34	22	29.0	20	F34023




Two-pipe Connection Set with Straight-way Valve

PG = 606

Consisting of: 90° elbow, thermostatic valve straight shape, without pre-adjustment, connection thread to the thermostatic head M 30 × 1.5, clamping ring screw union 15 mm, two-pipe connector (lockable and presettable), max. operating temperature: 110 °C, max. operating pressure: 10 bar.



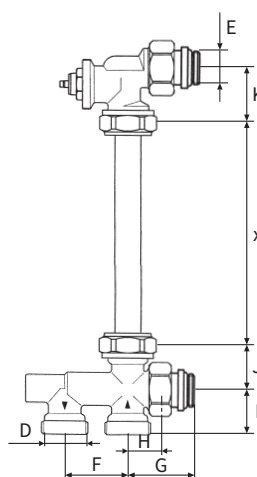
Type	Nom. diameter	Connection		Dimensions [mm]								Article no.
		D (ET)	E	F	G	H	I	J	K	L		
TVU Set Two-pipe D	DN 15	G 3/4" M	G 1/2" M	36.5	42	19.5	28	25.5	75.5	45	1	F34150




Two-pipe Connection Set with Axial Valve

PG = 606

Consisting of: Thermostatic valve axial shape, without pre-adjustment, connection thread to the thermostatic head M 30 × 1.5, clamping ring screw union 15 mm, two-pipe connector (lockable and presettable), max. operating temperature: 110 °C, max. operating pressure: 10 bar.



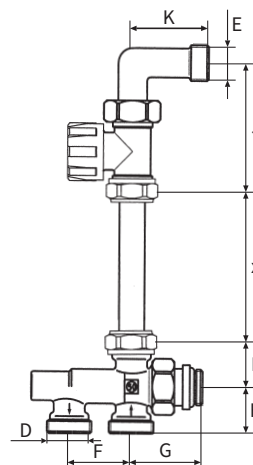
Type	Nom. diameter	Connection		Dimensions [mm]								Article no.
		D (ET)	E	F	G	H	I	J	K			
TVU Set Two-pipe A	DN 15	G 3/4" M	G 1/2" M	36.5	42	19.5	28	25.5	33.5		1	F34151




One-pipe Connection Set with Straight-way Valve

PG = 606

Consisting of: 90° elbow, thermostatic valve straight shape, without pre-adjustment, with extended flow coefficient, clamping ring screw union 15 mm, one-pipe connector (lockable), max. operating temperature: 110 °C, max. operating pressure: 10 bar.



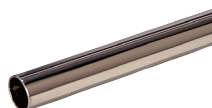
Type	Nom. diameter	Connection		Dimensions [mm]							Article no.
		D (ET)	E	F	G	H	I	J	K		
TVU Set One-pipe D	DN 15	G 3/4" M	G 1/2" M	36.5	42	28	25.5	75.5	45	1	F34152



Precision Steel Pipe

PG = 606

DIN 2391



Type	Diameter [mm]	Length [mm]		Article no.
Pipe - 15x600	15	600	30	F34154
Pipe - 15x1100	15	1100	30	F34156




Thermostatic Valve Adapter

PG = 606

For conversion of manual regulator valves according to TGL 25 877 to thermostatic regulation (thermostatic head connection M 33 x 2).



Type	Nom. diameter	Connection			Article no.
		to TH head	to valve		
Adapter 72.1 - DN15	DN 15	M 33 x 2	M 22 x1.5	30	F34164
Adapter 72.1 - DN20	DN 20	M 33 x 2	G 3/4" M	25	F34165
Adapter 72.1 - DN25	DN 25	M 33 x 2	G 1" M	15	F34166



Eccentric Connection

PG = 606



For radiator connections, for compensating boss spacing differences up to 5 mm per radiator.

Type	Nom. diameter		Article no.
Eccentric Connection	DN 15	20	F34158

Disassembly Device

PG = 922



For changing the internal parts of thermostatic valve bodies with connection thread M 30 x 1.5 at operating pressure in the system.

Type	Connection thread		Article no.
Disassembly 769	M 30 x 1.5	1	F34167

Connection Element

PG = 606



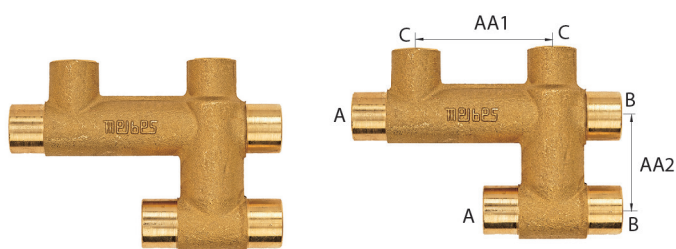
Between pipe crossing fittings and radiator valve - specially suited to connection to valve radiators. Elbows made of copper pipe for soldered or plug connections.

Type	Dimensions [mm]	Leg length [mm]		Article no.
Soldering Elbow 15mm	15 x 1	65 x 100	1	F34159

Double Crossing Pieces

PG = 606

Suitable for compact radiators, types RA 4 HZ and RA 5 HZ HZ also for standard pipe clips.



Type	Free access [mm]	Connection [mm]			Axial distance [mm]			Article no.
		A	B	C	AA 1	AA 2		
Crossing Piece RA 4 HZ	15	15	15	15	50	35	1	F34162
Crossing Piece RA 5 HZ	18	18	18	15	50	35	1	F34163
Crossing Piece RA 5	18	18	18	15	50	30	1	F34161



THERMOSTATIC HEADS

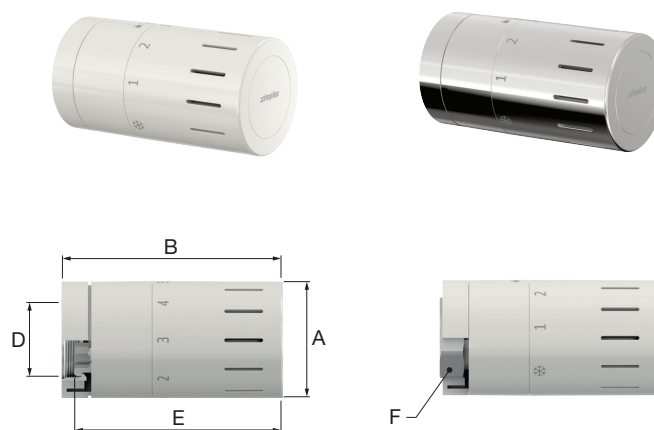
- Setpoint value range: 7 - 28 °C
- With zero position
- Position 3: about 20 °C
- Frost protection: about 7 °C
- Thermostatic heads with threaded connection M 30 x 1.5 tested according to DIN EN 215


Design Thermostatic Head TC-D1

PG = 606

Non-rising thermostatic head in a modern design with high level of installation convenience, with threaded connection M 30 x 1.5 or clamping connection, built-in fluid sensor, concealed threaded nut, white model classified according to "TELL-Thermostatic Efficiency-Label" in energy efficiency class I.

- Consistently homogeneous smooth surface makes the TC-D1 particularly user-friendly
- The desired temperature can be set via one-hand operation on the thermostat



Type	Version	Connection (D)	Dimensions [mm]					Article no.
			A (Ø)	B	E	F (WS)		
TK TC-D1 M30 x 1,5 - W	white*	M 30 x 1.5	46.3	88.0	84	32	1	F35320
TK TC-D1 M30 x 1,5 - C	chrome	M 30 x 1.5	46.3	88.0	84	32	1	F35321
TK TC-D1 clamping - W	white*	clamping	46.3	96.3	-	-	1	F35322
TK TC-D1 clamping - C	chrome	clamping	46.3	96.3	-	-	1	F35323

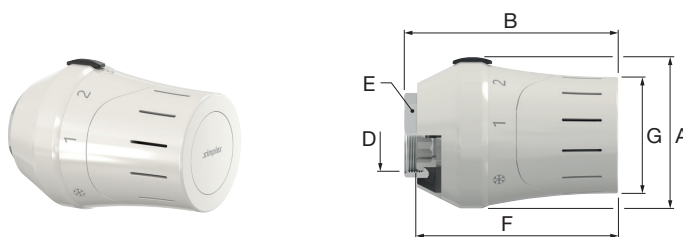
* similar to RAL 9016



Exclusive Thermostatic Head TC-E1

PG = 606

Non-rising thermostatic head with threaded connection M 30 x 1.5 or clamping connection, built-in fluid sensor, slide for setting the desired temperature, white model classified according to "TELL-Thermostatic Efficiency-Label" in energy efficiency class I.



Type	Version	Connection (D)	Dimensions [mm]						Article no.
			A (Ø)	B	E (WS)	F	G (Ø)		
TK TC-E1 M30 x 1,5 - W	white*	M 30 x 1.5	59	86	32	81	46	1	F35330
TK TC-E1 M30 x 1,5 - C	chrome	M 30 x 1.5	59	86	32	81	46	1	F35331
TK TC-E1 clamping - W	white*	clamping	59	94	-	-	46	1	F35332
TK TC-E1 clamping - C	chrome	clamping	59	94	-	-	46	1	F35333

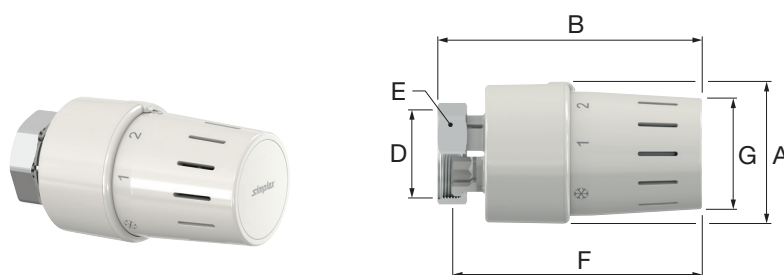
* similar to RAL 9016



Standard Thermostatic Head TC-S3

PG = 606

Rising thermostatic head in compact and robust design, with threaded connection M 30 x 1.5 or clamping connection, built-in fluid sensor, blocking and/or limitation of the adjustment range is simple and can be done on-site, white model classified according to "TELL-Thermostatic Efficiency-Label" in energy efficiency class I.



Type	Version	Connection (D)	Dimensions [mm]							Article no.
			A (Ø)	B ²	E (WS)	F ¹	F ²	G (Ø)		
TK TC-S3 M30 x 1,5 - W	white*	M 30 x 1.5	46.9	90	32	79	85	37.5	1	F35340
TK TC-S3 M30 x 1,5 - C	chrome	M 30 x 1.5	46.9	90	32	79	85	37.5	1	F35341
TK TC-S3 clamping - W	white*	clamping	46.9	98	-	-	-	37.5	1	F35342
TK TC-S3 clamping - C	chrome	clamping	46.9	98	-	-	-	37.5	1	F35343

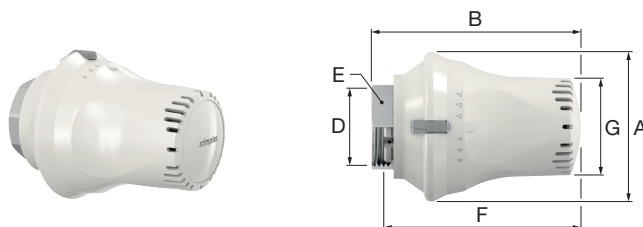
¹ at position 0, ² at position 5, * similar to RAL 9016



Standard Thermostatic Head TC-S4

PG = 606

Thermostatic head with threaded connection M 30 x 1.5 or clamping connection and built-in fluid sensor, consistently homogeneous smooth surface, easy to operate and functionally reliable angle-of-rotation limiter, classified according to "TELL-Thermostatic Efficiency-Label" in the energy efficiency class I.



Type	Version	Connec- tion (D)	Dimensions [mm]							Article no.
			A (Ø)	B ²	E (WS)	F ¹	F ²	G (Ø)		
TK TC-S4 M30 x 1,5 - W	white*	M 30 x 1.5	60	91	32	77	83	39	1	F35309
TK TC-S4 clamping - W	white*	clamping	60	97	-	-	-	39	1	F35310

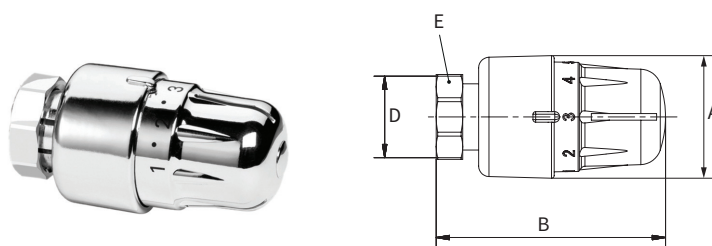
¹ at position 0, ² at position 5, * similar to RAL 9016



Design Thermostatic Head ROTHERM I

PG = 720

Thermostatic head with threaded connection M 30 x 1.5 and built-in fluid sensor, blocking and/or limitation of the adjustment range is easy and can be done on-site.



Type	Version	Connection (D)	Dimensions [mm]				Article no.
			A (Ø)	B	E (WS)		
TK ROTHERM I - C	chrome	M 30 x 1.5	46	87	32	1	F35356*

* discontinued article



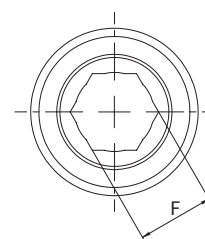
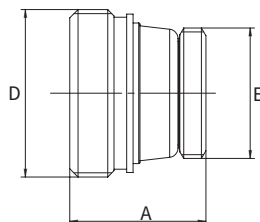
DESIGN CONNECTION ACCESSORIES

Design Connection Nipple

PG = 720

Connection nipple for connecting design bathroom valves, flat seal, self-sealing with special thread seal.

- Components made of high gloss chrome-plated brass
- Sealing materials: EPDM
- Max. operating temp.: 110 °C permanent temperature, 130 °C short-term
- Max. operating pressure: 10 bar



Type	Connection		Dimensions [mm]			Article no.
	D	E	A	F (WS)		
Conn. Nipple Chrome	G 3/4" M	G 1/2" M	21.5	12	10/50	F10505



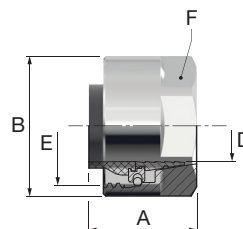
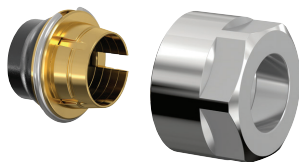
F11 Design Compression Adapter Set


PG = 720

2 pcs. compression adapters for connecting design bathroom valves, for blank, nickel- and chrome-plated copper pipes, carbon steel pipes and stainless steel pipes, suitable for G 3/4" M Euro taper, elastic seal, extended clamp ring for high pull forces, no support sleeves required, nut (wrench size 27 mm), with fixed stop, 2-step function: sealing - clamping.

- Components made of high gloss chrome-plated brass
- Sealing materials: EPDM
- Max. operating temp.: 110 °C permanent temperature, 130 °C short-term
- Max. operating pressure: 10 bar

→ For more information on appropriate pipes see *Compression Adapters (Connection Technology)!*



Type	Connection		Dimensions				Article no.
	E (ET)	D [mm]	A* [mm]	B (Ø) [mm]	F (WS) [mm]		
KV F11 - 15 x 1 Chrome	G 3/4" F	15 x 1	23.1	30	27	1 / 10	F11132

* Minimum insertion length



F3 Design Compression Adapter Set

PG = 720


2 pcs. compression adapters for connecting design bathroom valves, for plastic and multilayer composite pipes, suitable for G $\frac{3}{4}$ " M Euro taper, consisting of nut (wrench size 27 mm), plastic clamp ring and sleeve, O-ring seal on the sleeve, with fixed stop.

- Components made of high gloss chrome-plated brass
- Sealing materials: EPDM
- Pressure or temperature stress according to pipe manufacturer specifications

→ **Calibration arbor see Tools!**

→ **For more information on appropriate pipes see Compression Adapters (Connection Technology)!**



Type	Connection		Dimensions			 [Set]	Article no.
	E (ET)	D [mm]	A [mm]	B (Ø) [mm]	F (WS) [mm]		
KV F3 - 16 x 2 Chrome	G $\frac{3}{4}$ " F	16 x 2.0	24.5	30	27	1 / 10	F11482
KV F3 - 17 x 2 Chrome	G $\frac{3}{4}$ " F	17 x 2.0	24.5	30	27	1 / 10	F11483



RADIATOR LOCKSHIELD VALVES AND ACCESSORIES

Radiator Lockshield Valve M with Drain and Male Thread

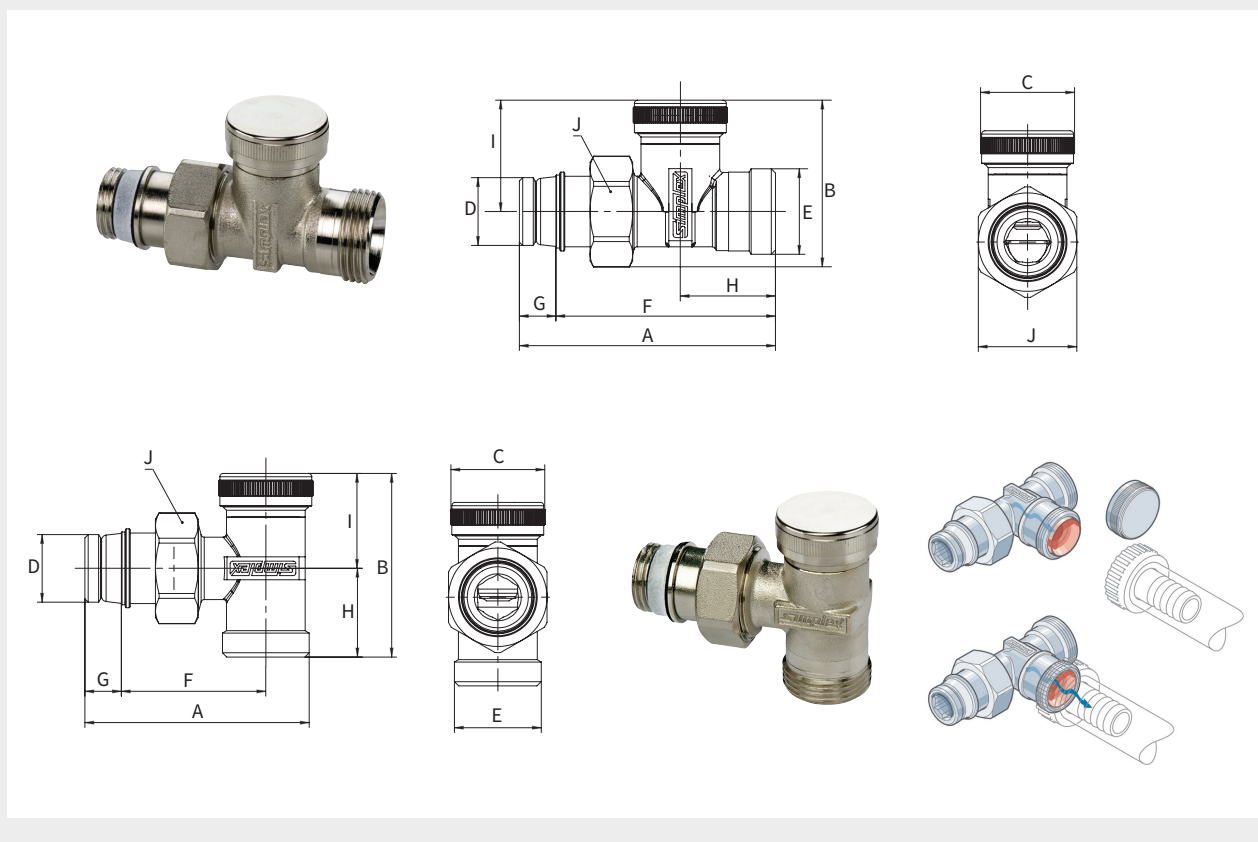
PG = 704

Shut-off and adjustable lockshield valve for use in heating systems, self-sealing with special thread seal, draining or filling without adapter by simply attaching a standard hose connection.

With G 3/4" M (Euro taper) for copper, carbon steel, stainless steel, plastic or multilayer composite pipes using a compression adapter.

- Components made of nickel-plated brass
- Sealing materials: EPDM
- Max. operating temp.: 110 °C permanent temperature, 130 °C short-term
- Max. operating pressure: 10 bar

→ Matching compression adapters available!



Type	Version	Connection			Article no.
		D	E (ET)		
RV AG/M-D - 1/2 x 3/4	straight	G 1/2" M	G 3/4" M	10/50	F11910
RV AG/M-E - 1/2 x 3/4	angle	G 1/2" M	G 3/4" M	10/50	F11911



Dimensions

Type	Dimensions [mm]							
	A	B	C	F	G	H	I	J (WS)
RV AG/M-D - 1/2 x 3/4	78.0	50.7	29	67	11	29	34	30
RV AG/M-E - 1/2 x 3/4	68.3	56.0	29	44	11	27	29	30

Radiator Lockshield Valve M with Drain and Female Thread

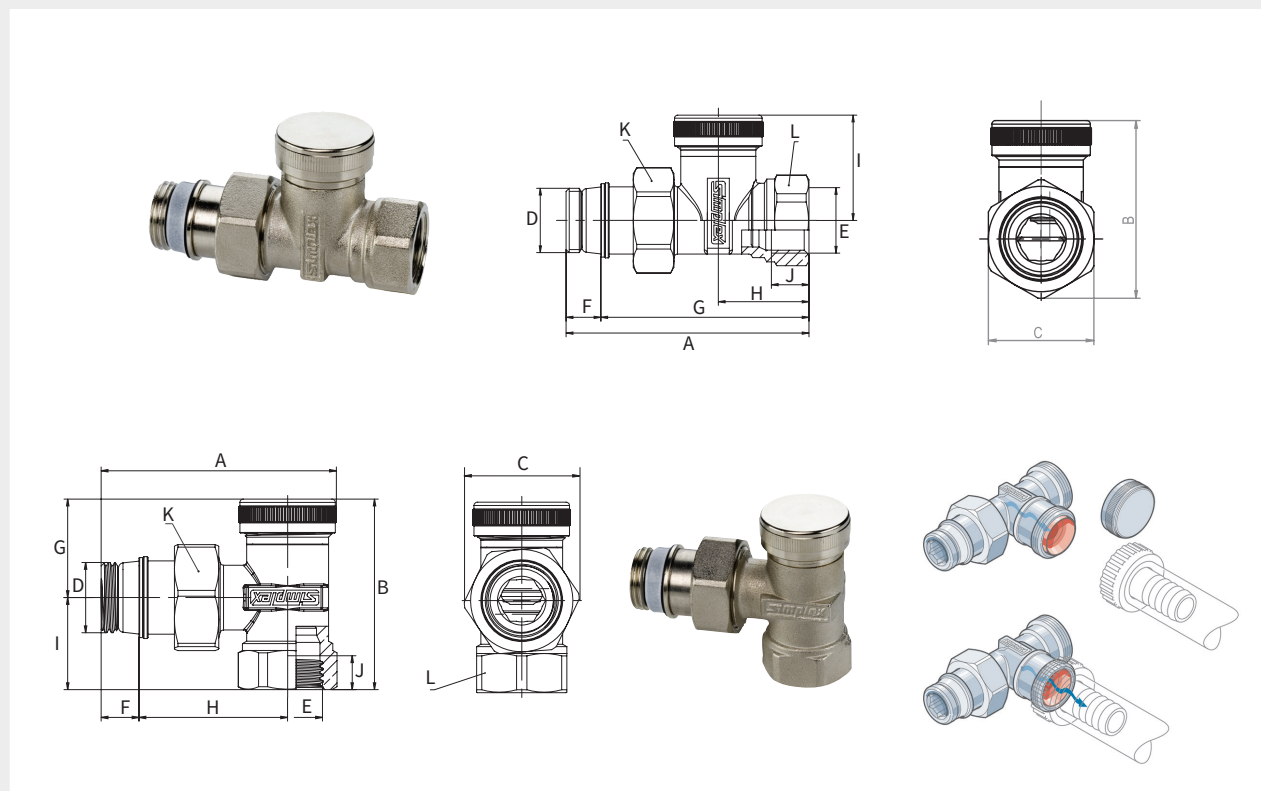
PG = 704

Shut-off and adjustable lockshield valve for use in heating systems, self-sealing with special thread seal, draining or filling without adapter by simply attaching a standard hose connection.

With female thread for threaded pipes or copper and steel pipes using a Simplex compression fitting and support sleeve.

- Components made of nickel-plated brass
- Sealing materials: EPDM
- Max. operating temp.: 110 °C permanent temperature, 130 °C short-term
- Max. operating pressure: 10 bar

→ **Matching support sleeves available!**



Type	Version	Connection			Article no.
		D	E		
RV IG/M-D - 3/8 x 3/8	straight	G 3/8" M	Rp 3/8"	10/50	F11901
RV IG/M-D - 1/2 x 1/2	straight	G 1/2" M	Rp 1/2"	10/50	F11903
RV IG/M-E - 3/8 x 3/8	angle	G 3/8" M	Rp 3/8"	10/50	F11905
RV IG/M-E - 1/2 x 1/2	angle	G 1/2" M	Rp 1/2"	10/50	F11907



Dimensions

Type	Dimensions [mm]									
	A	B	C	F	G	H	I	J	K (WS)	L (WS)
RV IG/M-D - 3/8 x 3/8	78	50.5	30	11.0	67	29.0	34	12	30	27
RV IG/M-D - 1/2 x 1/2	78	55.5	30	11.0	67	29.0	34	12	30	27
RV IG/M-E - 3/8 x 3/8	64	52.0	30	9.5	29	41.5	23	10	27	22
RV IG/M-E - 1/2 x 1/2	69	56.0	34	11.0	29	43.6	27	10	30	27

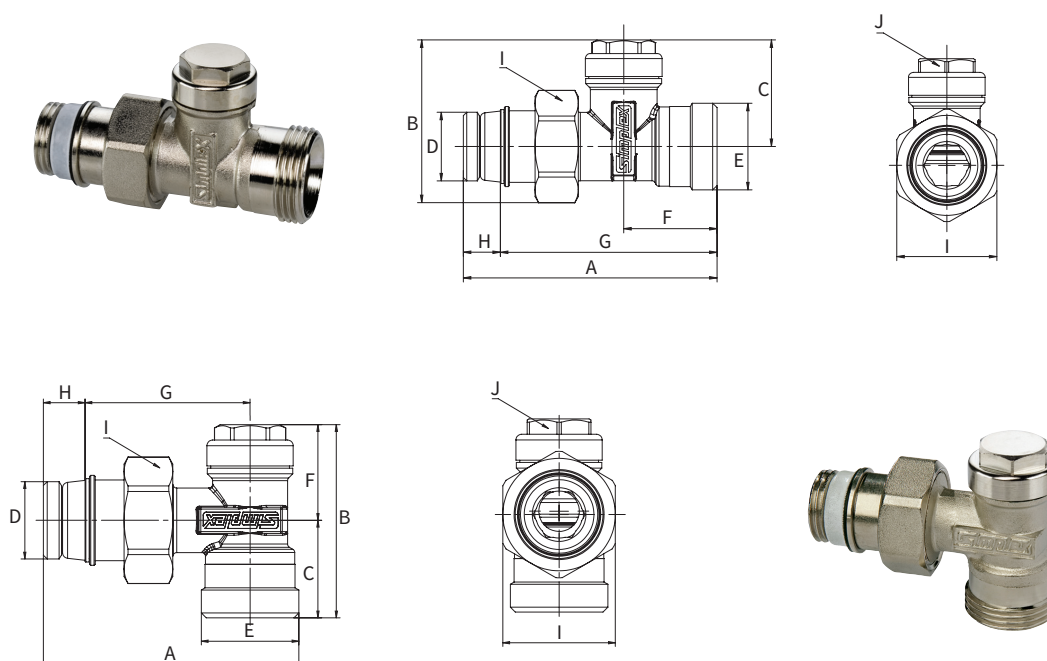
Radiator Lockshield Valve N with Male Thread


PG = 704

Shut-off and adjustable lockshield valve for use in heating systems, self-sealing with special thread seal. With G 3/4" M (Euro taper) for copper, carbon steel, stainless steel, plastic or multilayer composite pipes using a compression adapter.

- Components made of nickel-plated brass
- Sealing materials: EPDM
- Max. operating temp.: 110 °C permanent temperature, 130 °C short-term
- Max. operating pressure: 10 bar

→ Matching compression adapters available!



Type	Version	Connection			Article no.
		D	E (ET)		
RV AG/N-D - 1/2 x 3/4	straight	G 1/2" M	G 3/4" M	10/50	F10374
RV AG/N-E - 1/2 x 3/4	angle	G 1/2" M	G 3/4" M	10/50	F10375



Dimensions

Type	Dimensions [mm]							
	A	B	C	F	G	H	I (WS)	J (WS)
RV AG/N-D - 1/2 x 3/4	76	49.0	32	28.0	65	11	30	17
RV AG/N-E - 1/2 x 3/4	68	51.5	26	25.5	44	11	30	17

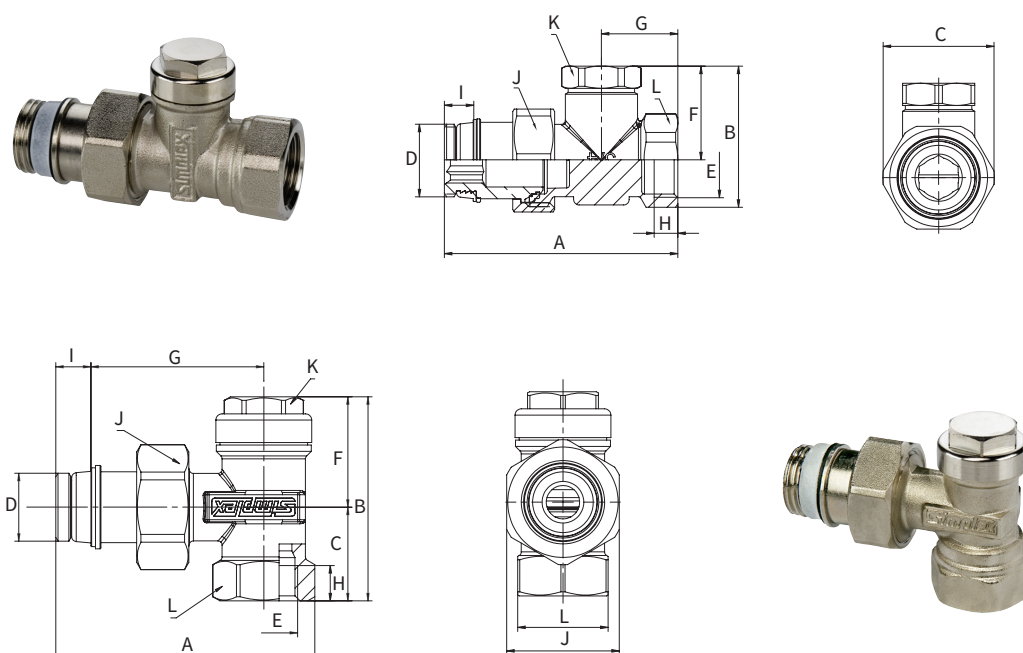
Radiator Lockshield Valve N with Female Thread


PG = 704

Shut-off and adjustable lockshield valve for use in heating systems, self-sealing with special thread seal.
With female thread for threaded pipes or copper and steel pipes using a Simplex compression adapter and support sleeve.

- Components made of nickel-plated brass
- Sealing materials: EPDM
- Max. operating temp.: 110 °C permanent temperature, 130 °C short-term
- Max. operating pressure: 10 bar

→ Matching support sleeves available!



Type	Version	Connection			Article no.
		D	E		
RV IG/N-D - 3/8 x 3/8	straight	G 3/8" M	Rp 3/8"	10/50	F10376
RV IG/N-D - 1/2 x 1/2	straight	G 1/2" M	Rp 1/2"	10/50	F10378
RV IG/N-D - 3/4 x 3/4	straight	G 3/4" M	Rp 3/4"	10/50	F10379
RV IG/N-E - 3/8 x 3/8	angle	G 3/8" M	Rp 3/8"	10/50	F10380
RV IG/N-E - 1/2 x 1/2	angle	G 1/2" M	Rp 1/2"	10/50	F10382
RV IG/N-E - 3/4 x 3/4	angle	G 3/4" M	Rp 3/4"	10/50	F10383



Dimensions

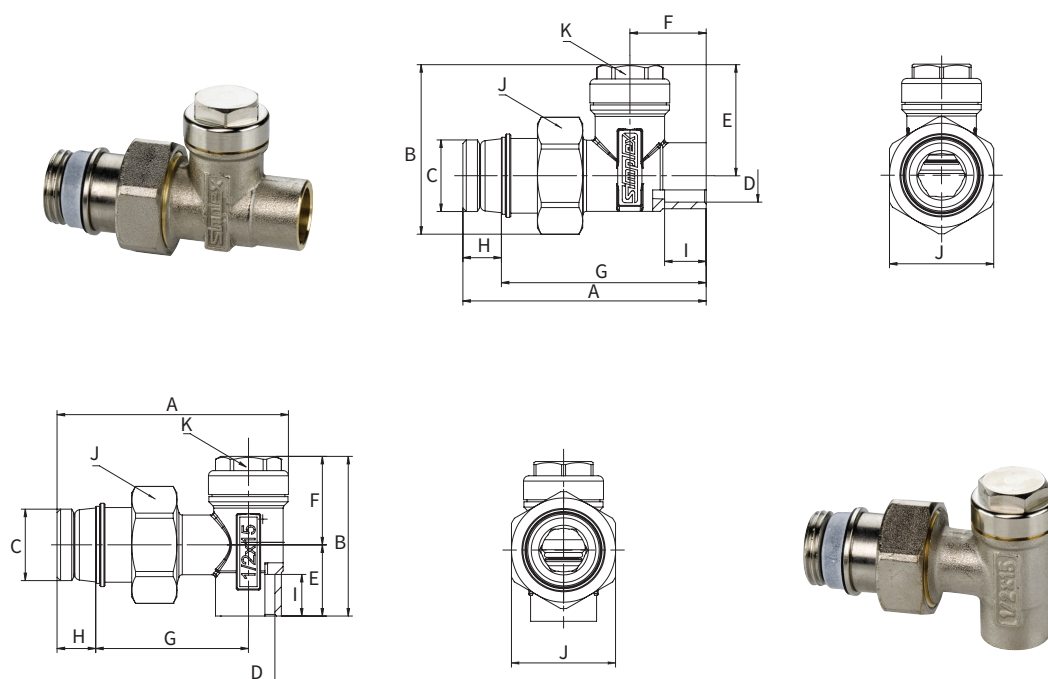
Type	Dimensions [mm]									
	A	B	C	F	G	H	I	J (WS)	K (WS)	L (WS)
RV IG/N-D - 3/8 x 3/8	72	44.5	30.0	32.0	27.0	8.5	9.0	27	17	22
RV IG/N-D - 1/2 x 1/2	76	49.5	34.0	32.0	27.5	8.5	10.6	30	17	27
RV IG/N-D - 3/4 x 3/4	84	51.0	40.0	34.0	27.5	8.5	10.6	27	26	31
RV IG/N-E - 3/8 x 3/8	62	49.0	22.5	26.5	41.5	9.5	8.5	27	17	22
RV IG/N-E - 1/2 x 1/2	70	51.5	26.0	25.5	44.2	11.5	11.1	30	17	27
RV IG/N-E - 3/4 x 3/4	80	52.5	23.0	29.5	51.0	13.0	11.5	36	26	30


Radiator Lockshield Valve L for Soldering

PG = 704

Shut-off and adjustable lockshield valve for use in heating systems, self-sealing with special thread seal.

- Components made of nickel-plated brass
- Sealing materials: EPDM
- Max. operating temp.: 110 °C permanent temperature, 130 °C short-term
- Max. operating pressure: 10 bar



Type	Version	Connection			Article no.
		C	D (Ø) [mm]		
RV L-D - 1/2 x 15	straight	G 1/2" M	15	10/50	F11756
RV L-E - 1/2 x 15	angle	G 1/2" M	15	10/50	F11766



Dimensions

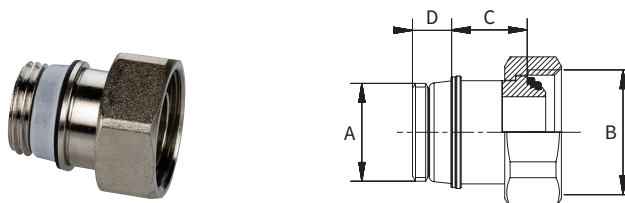
Type	Dimensions [mm]								
	A	B	E	F	G	H	I	J (WS)	K (WS)
RV L-D - 1/2 x 15	70.1	49	32.0	22.0	59	11	12	30	17
RV L-E - 1/2 x 15	66.6	46	20.5	26.5	44	11	12	30	17


Threaded Connection with Euro Taper

PG = 704

Threaded Connection for use in heating systems, self-sealing with special thread seal, taper elastically sealed.

- Components made of brass
- Sealing materials: EPDM
- Max. operating temp.: 110 °C permanent temperature, 130 °C short-term
- Max. operating pressure: 10 bar



Type	Version	Connection		Dimensions [mm]			Article no.
		A	B (ET)	C	D		
Conn. ET Ni - 3/8 x 5/8	nickel-plated	G 3/8" M	G 5/8" F	16	9	25/200	F10316
Conn. ET Ni - 1/2 x 5/8	nickel-plated	G 1/2" M	G 5/8" F	14	11	25/200	F10317
Conn. ET bl. - 1/2 x 3/4	blank	G 1/2" M	G 3/4" F	16	11	25/100	F10314
Conn. ET Ni - 1/2 x 3/4	nickel-plated	G 1/2" M	G 3/4" F	16	11	25/200	F10318
Conn. ET bl. - 3/4 x 1	blank	G 3/4" M	G 1" F	15	11	10/100	F10315
Conn. ET Ni - 3/4 x 1	nickel-plated	G 3/4" M	G 1" F	20	11	10/100	F10319

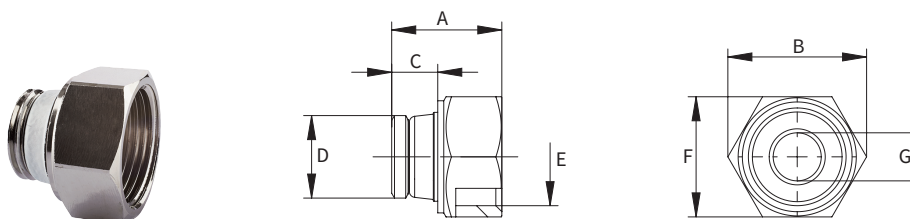



Extension Plug

PG = 704

Extension plug for use in heating systems, self-sealing with special thread seal.

- Components made of nickel-plated brass
- Sealing materials: EPDM
- Max. operating temp.: 110 °C permanent temperature, 130 °C short-term
- Max. operating pressure: 10 bar



Type	Connection		Dimensions [mm]						Article no.
	D	E	A	B	C	F (WS)	G		
Extension Plug	G 1/2" M	G 3/4" F	28	35	12	30	12	25	F10822

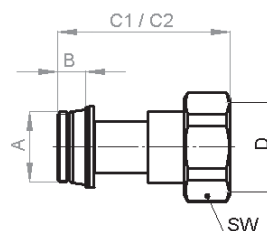



Compensation Fitting for Radiator Connection

PG = 704

Sleeve for length compensation up to 20 mm, with union nut, self-sealing with special thread seal.

- Components made of nickel-plated brass
- Sealing materials: EPDM
- Max. operating temp.: 110 °C permanent temperature, 130 °C short-term
- Max. operating pressure: 10 bar



Type	Connection		Dimensions [mm]			Telescope Displacement [mm]		Article no.
	A	D*	B	C1	C2			
Compensation - 1/2 x 3/4	G 1/2" M	G 3/4" F	10	40	59	4-20	10	F10511
Compensation - 3/4 x 1	G 3/4" M	G 1" F	10	44	63	0-20	10	F10512
Compensation - 1 x 1 1/4	G 1" M	G 1 1/4" F	14	50	69	0-20	10	F10513

* Seal: F10511 with Euro taper, F10512 with cone, F10513 with flat seal.

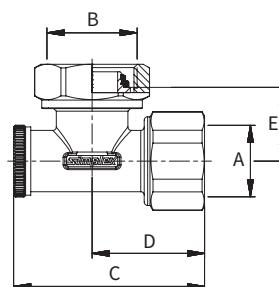



DIN Adapter

PG = 704

Adapter for replacing DIN radiators with flat radiators with connections on bottom left or right, with shut-off, including additional blind cap G 3/4" F.

- Components made of nickel-plated brass
- Sealing materials: EPDM
- Max. operating temp.: 110 °C permanent temperature, 130 °C short-term
- Max. operating pressure: 10 bar



Type	Connection		Dimensions [mm]				Article no.
	A	B (ET)	C	D	E		
DIN Adapter	G 1/2" F	G 3/4" M	56	33	22	1	F10550



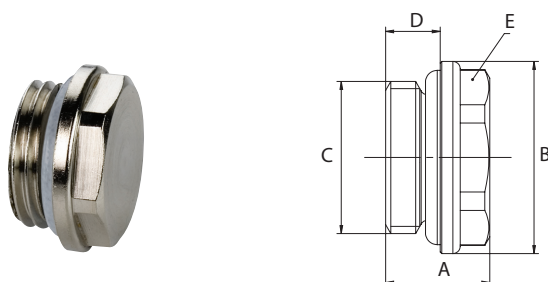
BLIND PLUGS

- Components made of nickel-plated brass
- Sealing materials: EPDM
- Max. operating temp.: 110 °C permanent temperature, 130 °C short-term
- Max. operating pressure: 10 bar

STANDARD Blind Plug

PG = 705

Radiator plug with O-ring seal.



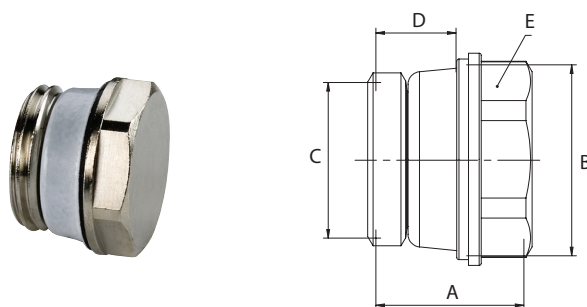
Type	Connection (C)	Dimensions [mm]					Article no.
		A	B	D	E (WS)		
Blind Plug - 3/8	G 3/8" M	13.5	26	7.4	17	10/100	F10702
Blind Plug - 1/2	G 1/2" M	14.0	26	7.4	22	10/100	F10703




EXCLUSIV Blind Plug

PG = 705

Radiator plug self-sealing with special thread seal.



Type	Connection (C)	Dimensions [mm]					Article no.
		A	B	D	E (WS)		
Blind Plug EXCL. - 3/8	G 3/8" M	15.5	20	8.4	17	10/100	F10802
Blind Plug EXCL. - 1/2	G 1/2" M	17.5	25	10.4	27	10/100	F10803
Blind Plug EXCL. - 3/4	G 3/4" M	17.7	30	10.4	27	10/100	F10804



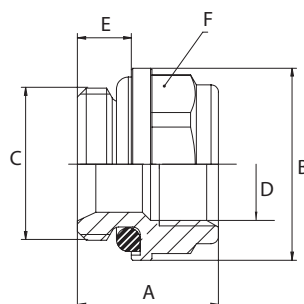
REDUCING PLUGS


- Components made of nickel-plated brass
- Sealing materials: EPDM
- Max. operating temp.: 110 °C permanent temperature, 130 °C short-term
- Max. operating pressure: 10 bar

STANDARD Reducing Plug

PG = 705

Radiator plug with O-ring seal.



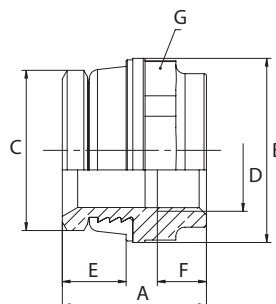
Type	Connection		Dimensions [mm]					Article no.
	C	D	A	B	E	F (WS)		
Red. Plug - 1/2 x 3/8	G 1/2" M	G 3/8" F	19	26	7.3	22	10/100	F10705




EXCLUSIV Reducing Plug

PG = 705

Radiator plug self-sealing with special thread seal.



Type	Connection		Dimensions [mm]						Article no.
	C	D	A	B	E	F	G (WS)		
Red. Plug EXCL. - 1/2 x 1/8	G 1/2" M	G 1/8" F	20.5	25	10.4	10.0	22	10/100	F10805
Red. Plug EXCL. - 1/2 x 3/8	G 1/2" M	G 3/8" F	23.5	25	11.5	8.5	22	10/100	F10807
Red. Plug EXCL. - 3/4 x 3/8	G 3/4" M	G 3/8" F	17.9	30	11.5	16.0	27	10/100	F10808
Red. Plug EXCL. - 3/4 x 1/2	G 3/4" M	G 1/2" F	23.5	30	10.4	8.0	27	10/100	F10809



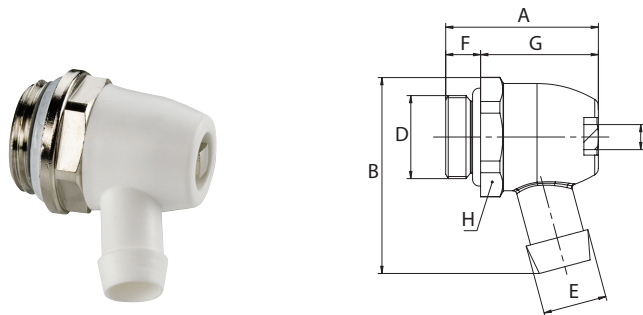
DRAIN PLUGS


- Components made of nickel-plated brass, partly with plastic (version STANDARD I)
- Sealing materials: EPDM
- Max. operating temp.: 110 °C permanent temperature, 130 °C short-term
- Max. operating pressure: 10 bar

STANDARD I Drain Plug with Swivelling Outlet in Plastic

PG = 705

Drain plug for radiators, outlet sleeve for plastic hose, with O-ring seal.



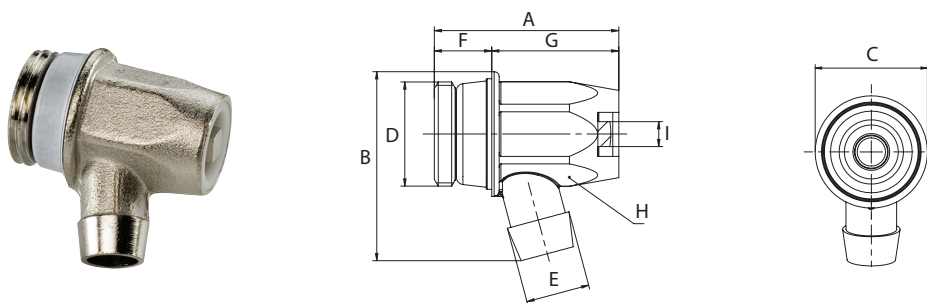
Type	Connection (D)	Dimensions [mm]									Article no.
		A	B	C	E (Ø)	F	G	H (WS)	I (WS)		
Drain Plug I - 3/8	G 3/8" M	31.0	39.5	22	13	7.0	24.0	22	5	10/100	F10623
Drain Plug I - 1/2	G 1/2" M	33.5	40.5	26	13	7.3	26.5	22	5	10/100	F10622




EXCLUSIV S Drain Plug in Metal with Outlet

PG = 705

Drain plug for radiators, outlet sleeve for plastic hose, self-sealing with special thread seal.



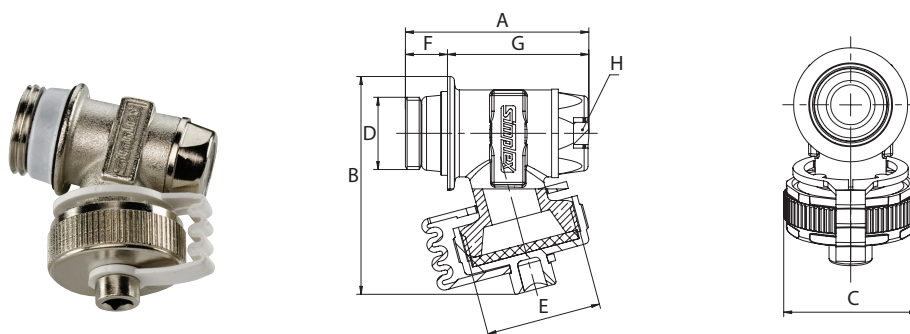
Type	Connection (D)	Dimensions [mm]									Article no.
		A	B	C	E (Ø)	F	G	H (WS)	I (WS)		
Drain Plug S - 1/2	G 1/2" M	37	38	25	13	11.5	25.5	20	5	10/100	F10604




EXCLUSIV R Drain Plug in Metal with Hose Connection

PG = 705

Drain plug for radiators, blanking cap serves as operating key, self-sealing with special thread seal.



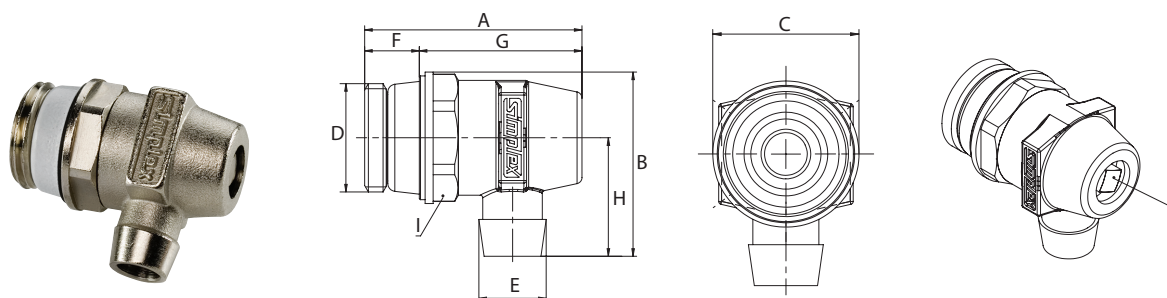
Type	Connection		Dimensions [mm]							Article no.
	D	E	A	B	C	F	G	H (WS)		
Drain Plug R - 3/8 x 3/4	G 3/8" M	G 3/4" M	41.5	50	30.5	9.5	32.0	5	10/100	F10601
Drain Plug R - 1/2 x 3/4	G 1/2" M	G 3/4" M	43.2	48	30.5	11.5	31.7	5	10/100	F10602




EXCLUSIV N Drain Plug with Swivelling Outlet in Metal

PG = 705

Drain plug for radiators, outlet sleeve for plastic hose, self-sealing with special thread seal.



Type	Connection (D)		Article no.
Drain Plug N - 1/2	G 1/2" M	10/100	F10627



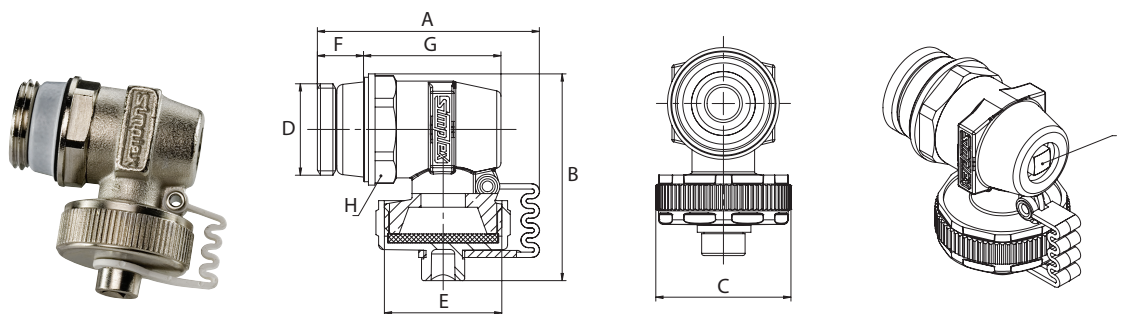
Dimensions


Type	Dimensions [mm]								
	A	B	C	E (Ø)	F	G	H	I (WS)	J (WS)
Drain Plug N - 1/2	41.5	35	25	13	10.4	31.1	22.5	22	5

EXCLUSIV M Drain Plug with Swivelling Outlet in Metal with Hose Connection

PG = 705

Drain plug for radiators, blanking cap serves as operating key, self-sealing with special thread seal.



Type	Connection		Dimensions [mm]								Article no.
	D	E	A	B	C	F	G	H (WS)	I (WS)		
Drain Plug M - 1/2 x 3/4	G 1/2" M	G 3/4" M	50	46.5	30.5	10.4	31	22	5	10/100	F10625



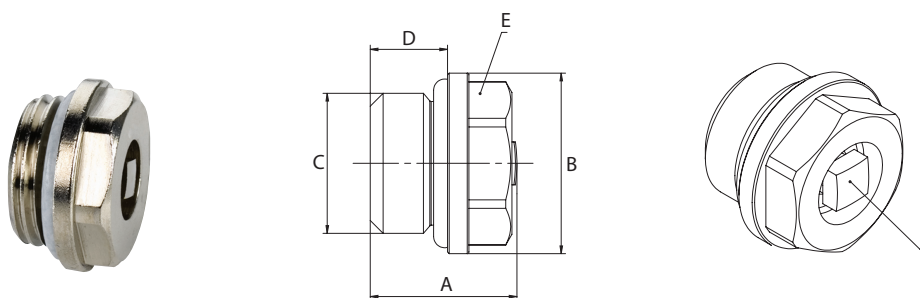
AIR PLUGS


- Components made of nickel-plated brass, partly with plastic (version STANDARD C)
- Sealing materials: EPDM
- Max. operating temp.: 110 °C permanent temperature, 130 °C short-term
- Max. operating pressure: 10 bar

STANDARD A Air Plug

PG = 705

Radiator plug with O-ring seal.



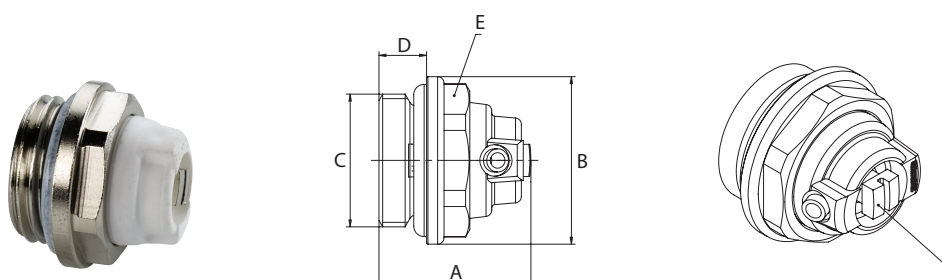
Type	Connection (C)	Dimensions [mm]						Article no.
		A	B	D	E (WS)	F (WS)		
Air Plug A - 3/8	G 3/8" M	16.5	21	9	17	5	10/100	F10710
Air Plug A - 1/2	G 1/2" M	16.3	26	8	22	5	10/100	F10711




STANDARD C Air Plug with Swivelling Outlet

PG = 705

Radiator plug with O-ring seal.



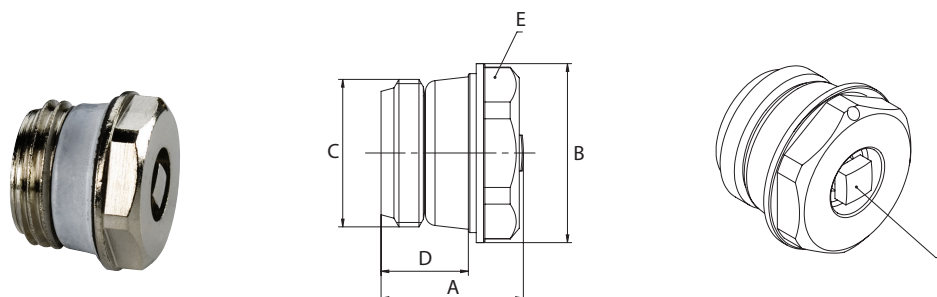
Type	Version	Connection (C)	Dimensions [mm]						Article no.
			A	B	D	E (WS)	F (WS)		
Air Plug C - 3/8	brass head	G 3/8" M	24	21	7.0	19	5	10/100	F10713
Air Plug C - 1/2	plastic head	G 1/2" M	25	26	7.4	22	5	10/100	F10714




EXCLUSIV A Air Plug

PG = 705

Radiator plug self-sealing with special thread seal.



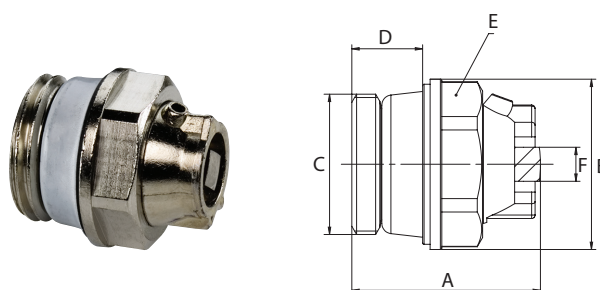
Type	Connection (C)	Dimensions [mm]						Article no.
		A	B	D	E (WS)	F (WS)		
Air Plug A EXCL. - 3/8	G 3/8" M	19.0	20	11.0	17	5	10/100	F10810
Air Plug A EXCL. - 1/2	G 1/2" M	20.0	25	12.2	22	5	10/100	F10811
Air Plug A EXCL. - 3/4	G 3/4" M	19.2	30	11.9	27	5	10/100	F10812




EXCLUSIV C Air Plug with Swivelling Outlet in Metal

PG = 705

Radiator plug self-sealing with special thread seal.



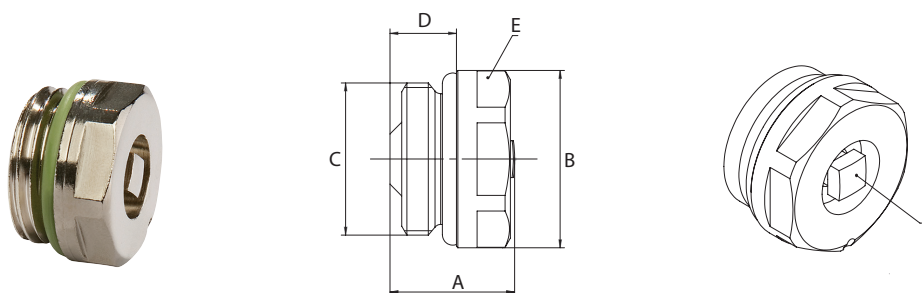
Type	Connection (C)	Dimensions [mm]						Article no.
		A	B	D	E (WS)	F (WS)		
Air Plug C EXCL. - 3/8	G 3/8" M	25.5	21	8.4	19	5	10/100	F10813
Air Plug C EXCL. - 1/2	G 1/2" M	28.0	25	10.4	22	5	10/100	F10814




Air Plug for Solar

Air plug for use in solar installations, heat-resistant FKM O-ring for water-glycol mixes up to 50%.

- Components made of nickel-plated brass
- Sealing materials: FKM
- Max. operating temperature: 180 °C permanent temperature, 200 °C short-term
- Max. operating pressure: 10 bar



Type	Connection (C)	Dimensions [mm]						Article no.
		A	B	D	E (WS)	F (WS)		
Air Plug Solar - 1/2	G 1/2" M	17	24	9	22	5	50/250	F99099




Metal Ventilation Key

PG = 705



Square ventilation key for radiator plugs.

- Material: Nickel-plated metal

Type	Dimension [mm]		Article no.
Ventilation Key	5	100/1000	F11202



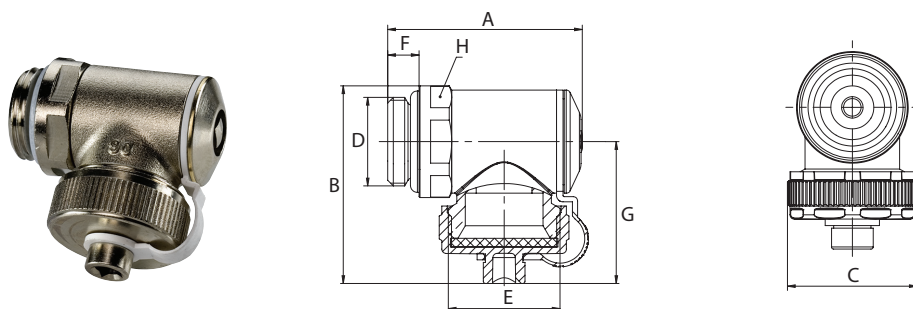
FILL AND DRAIN PLUGS


- Components made of brass, partly with plastic (version STANDARD V with plastic spout body)
- Sealing materials: EPDM
- Max. operating temp.: 110 °C permanent temperature, 130 °C short-term
- Max. operating pressure: 10 bar

STANDARD V Fill and Drain Plug, Spout Body in Metal

PG = 705

Fill and drain plug for radiators, blanking cap serves as operating key, with O-ring seal.



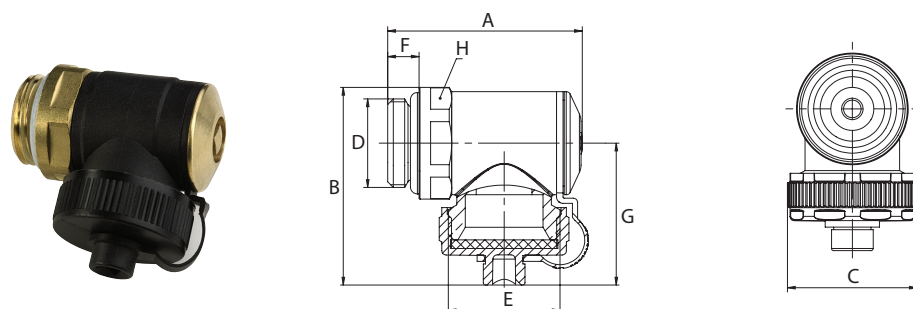
Type	Version	Connection		Dimensions [mm]							Article no.
		D	E	A	B	C	F	G	H (WS)		
Fill+Drain bl. - 3/8 x 3/4	blank	G 3/8" M	G 3/4" M	43	46	30	7	33	24	10/100	F10605
Fill+Drain Ni. - 3/8 x 3/4	nickel-pl.	G 3/8" M	G 3/4" M	43	46	30	7	33	24	10/100	F10613
Fill+Drain bl. - 1/2 x 3/4	blank	G 1/2" M	G 3/4" M	46	46	30	8	33	24	10/100	F10607
Fill+Drain Ni. - 1/2 x 3/4	nickel-pl.	G 1/2" M	G 3/4" M	46	46	30	8	33	24	10/100	F10608




STANDARD V Fill and Drain Plug, Spout Body in Plastic

PG = 705

Fill and drain plug for radiators, blanking cap serves as operating key, with O-ring seal.



Type	Version	Connection		Dimensions [mm]							Article no.
		D	E	A	B	C	F	G	H (WS)		
Fill+Drain pl./Ni. - 3/8 x 3/4	nickel-pl.	G 3/8" M	G 3/4" M	43	46	30	7	33	24	10/100	F10609*
Fill+Drain pl./bl. - 1/2 x 3/4	blank	G 1/2" M	G 3/4" M	46	46	30	8	33	24	10/100	F10611*
Fill+Drain pl./Ni. - 1/2 x 3/4	nickel-pl.	G 1/2" M	G 3/4" M	46	46	30	8	33	24	10/100	F10612

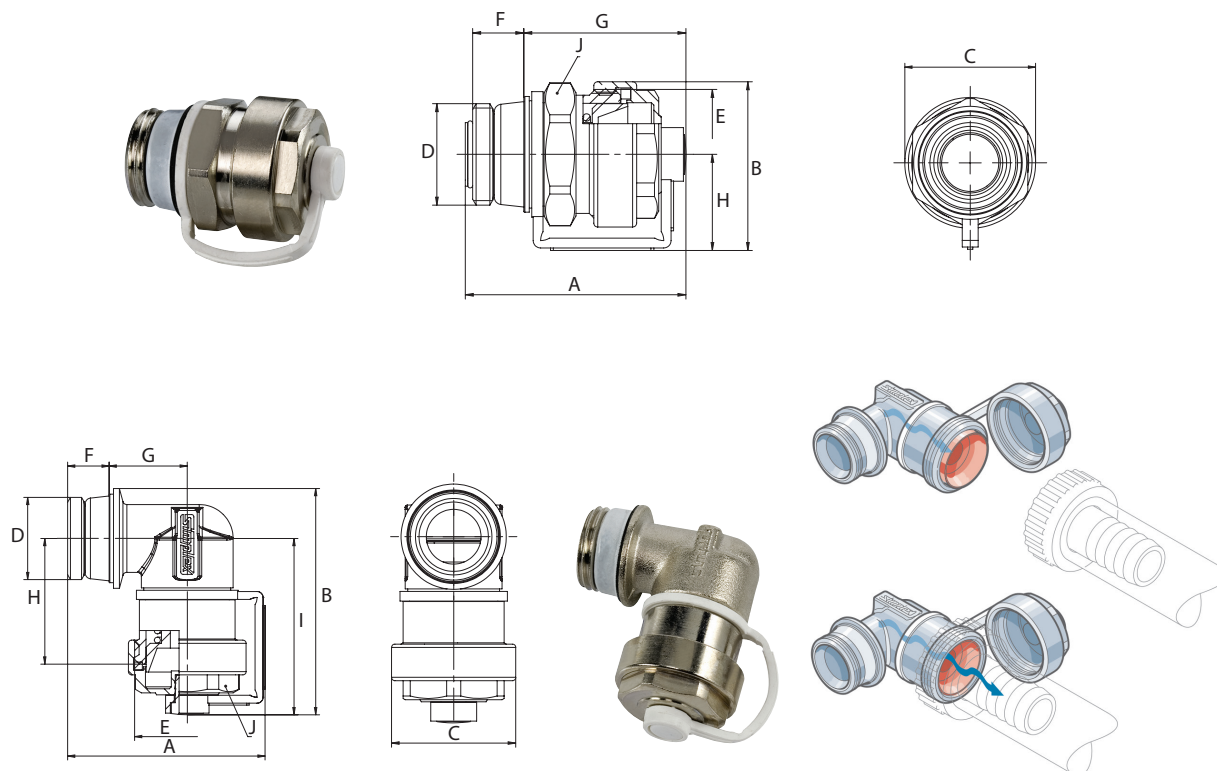
* discontinued article



EXCLUSIV Fill and Drain Plug

PG = 705

Fill and drain plug for radiators, draining and filling by attaching a standard hose connection, self-sealing with special thread seal.



Type	Version	Connection			Article no.
		D	E		
Fill+Drain EXCL. D - 1/2 x 3/4	straight	G 1/2" M	G 3/4" M	10/100	F10628
Fill+Drain EXCL. E - 1/2 x 3/4	angle	G 1/2" M	G 3/4" M	10/100	F10629



Dimensions

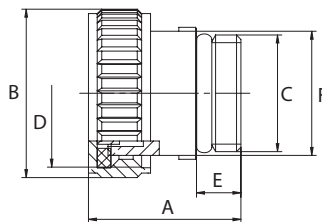
Type	Dimensions [mm]							
	A	B	C	F	G	H	I	J (WS)
Fill+Drain EXCL. D - 1/2 x 3/4	45.0	34.5	29.5	10.4	33.0	19.5	-	26
Fill+Drain EXCL. E - 1/2 x 3/4	49.5	57.0	29.5	10.4	19.6	31.5	44	24


Fill and Drain Plug

PG = 705

Fill and drain plug, draining and filling by attaching a standard hose connection together with the Simplex adapter F13447, with O-ring seal, self-closing, incl. cap.

- Components made of nickel-plated brass
- Sealing materials: EPDM
- Max. operating temp.: 110 °C permanent temperature, 130 °C short-term
- Max. operating pressure: 10 bar



Type	Connection		Dimensions [mm]					Article no.
	C	D	A	B	E	F (WS)		
Fill+Drain - 1/4	G 1/4" M	G 3/8" M	17.5	19	5	14	1/10	F13446



RADIATOR PLUGS FOR STEEL AND CAST IRON RADIATORS

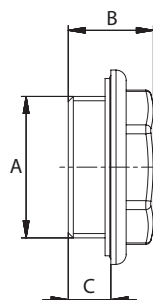
- Components made of steel, partly with plastic (light versions)
- Max. operating temp.: 110 °C permanent temperature, 130 °C short-term
- Max. operating pressure: 10 bar


→ **Installation spanner see Tools!**

Blind Plug for Steel and Cast Iron Radiators

PG = 705

- Light-weight, pressed version: with special flat seal EPDM 2.5 mm
- White coated version, with special flat seal



Type	Version	Connection (A)	Dimensions [mm]			Article no.
			B	C		
Blind Plug - light 1 1/4 R	light-weight	G 1 1/4" M (R)	27	13	10/100	F10901
Blind Plug - light 1 1/4 L	light-weight	G 1 1/4" M (L)	27	13	10/100	F10902
Blind Plug - white 1 1/4 R	white*	G 1 1/4" M (R)	27	13	10/100	F10951
Blind Plug - white 1 1/4 L	white*	G 1 1/4" M (L)	27	13	10/100	F10952

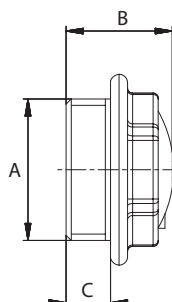
* similar to RAL 9016, (R) = right-handed thread, (L) = left-handed thread




Air Plug for Steel and Cast Iron Radiators

PG = 705

- Light-weight, pressed version: aluminium-coloured housing, rotatable outlet head in white* plastic, with special pressed seal
- White coated version: white housing, rotatable outlet head in white plastic, with special pressed seal



Type	Version	Connection (A)	Dimensions [mm]			Article no.
			B	C		
Air Plug - light 1 1/4 R	light-weight	G 1 1/4" M (R)	28	13	10/100	F10909
Air Plug - light 1 1/4 L	light-weight	G 1 1/4" M (L)	28	13	10/100	F10910
Air Plug - white 1 1/4 R	white*	G 1 1/4" M (R)	28	13	10/100	F10960
Air Plug - white 1 1/4 L	white*	G 1 1/4" M (L)	28	13	10/100	F10961

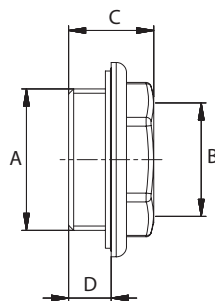
* similar to RAL 9016, (R) = right-handed thread, (L) = left-handed thread




Reducing Plug for Steel and Cast Iron Radiators

PG = 705

- Light-weight, pressed version: with special flat seal EPDM 2.5 mm
- White coated version, with special flat seal



Type	Version	Connection		Dimensions [mm]			Article no.
		A	B	C	D		
Red. Plug - light 1 1/4 R x 3/8	light-weight	G 1 1/4" M (R)	G 3/8" F	27	13	10/100	F10903
Red. Plug - light 1 1/4 R x 1/2	light-weight	G 1 1/4" M (R)	G 1/2" F	27	13	10/100	F10904
Red. Plug - light 1 1/4 R x 3/4	light-weight	G 1 1/4" M (R)	G 3/4" F	27	13	10/100	F10905
Red. Plug - light 1 1/4 L x 3/8	light-weight	G 1 1/4" M (L)	G 3/8" F	27	13	10/100	F10906
Red. Plug - light 1 1/4 L x 1/2	light-weight	G 1 1/4" M (L)	G 1/2" F	27	13	10/100	F10907
Red. Plug - light 1 1/4 L x 3/4	light-weight	G 1 1/4" M (L)	G 3/4" F	27	13	10/100	F10908
Red. Plug - white 1 1/4 R x 3/8	white*	G 1 1/4" M (R)	G 3/8" F	27	13	10/100	F10953
Red. Plug - white 1 1/4 R x 1/2	white*	G 1 1/4" M (R)	G 1/2" F	27	13	10/100	F10954
Red. Plug - white 1 1/4 R x 3/4	white*	G 1 1/4" M (R)	G 3/4" F	27	13	10/100	F10955
Red. Plug - white 1 1/4 L x 3/8	white*	G 1 1/4" M (L)	G 3/8" F	27	13	10/100	F10956
Red. Plug - white 1 1/4 L x 1/2	white*	G 1 1/4" M (L)	G 1/2" F	27	13	10/100	F10957
Red. Plug - white 1 1/4 L x 3/4	white*	G 1 1/4" M (L)	G 3/4" F	27	13	10/100	F10958

* similar to RAL 9016, (R) = right-handed thread, (L) = left-handed thread



Radiator Nipple for Steel and Cast Iron Radiators

PG = 705

Radiator nipple with right and left thread, HD seal 1 mm, non-stick coating.



Type	Connection		Article no.
Rad. Nipple - 1 1/4 R+L	G 1 1/4" M (R+L)	10/100	F10913

(R) = right-handed thread, (L) = left-handed thread



KE KELIT NZ Ltd.
0800 4 KE KELIT
0800 4 5353548
climatecontrol@kekelit.co.nz
www.kekelit.co.nz