

Heating & Cooling Buffer Tanks

For heat pump
installations



PS50

The PS 50 heating and cooling buffer tank was specially developed for heat pump applications. The 2-in-1 heating and cooling function is a particular advantage of this buffer tank.

Product Advantages

- Cooling in summer, heating in winter.
- Particularly space-saving due to low height.
- Sensor tube integrated in the flange.
- Buffer tank for efficient operation.

Technical Advantages

- Feet included for floor standing installation.
- Wall mounting factory fitted.
- Sheet steel outer casing.
- 1" connections (4x).
- Air vent valve G1/2" mounted.



PS100

The PS 100 is specially designed for operation with heat pumps. A particular advantage is, that this product can be used wall-mounted or floor-standing.

Product Advantages

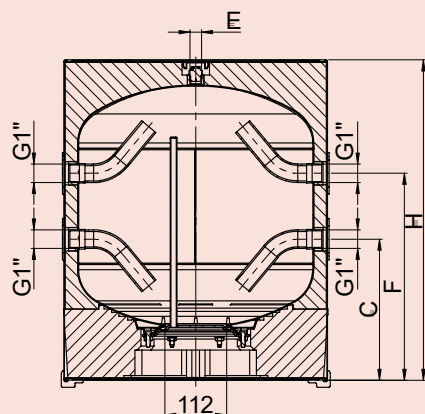
- Cooling in summer, heating in winter.
- Wall-mounted or floor-standing mountable.
- Sensor tube integrated in flange.
- Buffer tank for efficient operation.

Technical Advantages

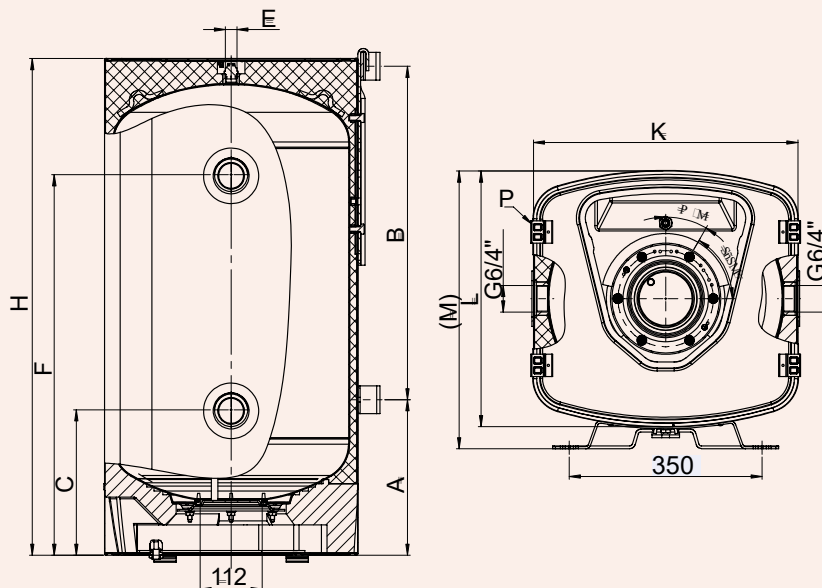
- Including feet for floor standing installation.
- Wall mounting factory fitted.
- 6/4" connections (4x).
- Vent valve G1/2" mounted.
- The direct-foamed insulation made of PU foam is diffusion-tight.

Technical Data

PS50



PS100



Type		PS50	PS100
Item Number		A 344 84	A 344 18
Weight	kg	38	44
Height with Insulation	mm	579	894
External dimensions with Insulation	mm	480x460 (500)	
Wall Bracket mounting	mm	350	
Wall foot Spacer	A	130	400
Suspension Dimension	B	280	600 adjustable 400-700
Feet for floor installation	P	4 pieces included	
Max. Operating Pressure	bar	3	
Max. Operating temperature	°C	-5* / 95	
Buffer connections	G	Female thread 4x G 1"	Female thread 4x G 6/4"
Buffer connections below	C mm	255	260
Buffer connection top	F mm	374	683
Flange outside diameter / clear width	mm	ø195 / ø112	
Venting	E	Venting valve G 1/2" mounted	
Sensor tube in flange plate	mm	Inner ø9 x 360	
Heat loss according to EN 12897	KWh/24h	0,72	1,17
Energy efficiency class	ErP	B	B
Construction type Inner tanks		Quality Steel	
Cladding		Powder-coated Steel Casing	
Heat insulation		Polyurethane Foam	

*For cooling applications, the flange and connections must be insulated diffusion-tight on site!