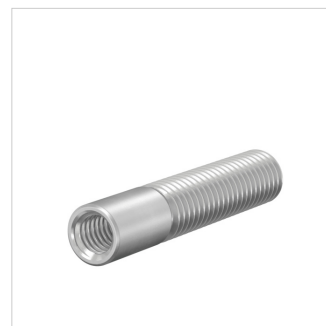
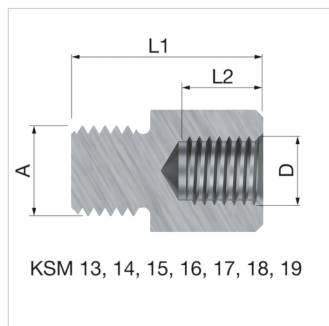
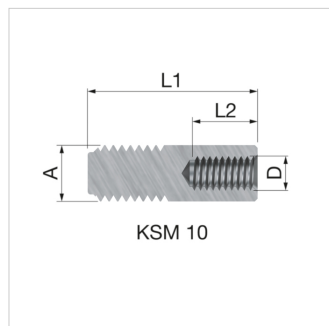
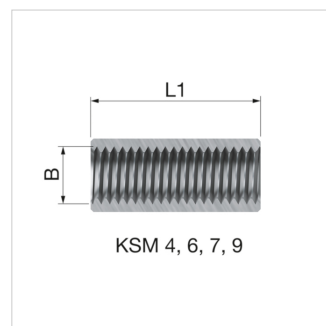
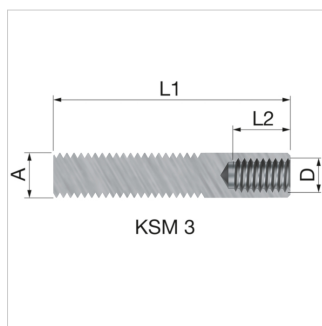
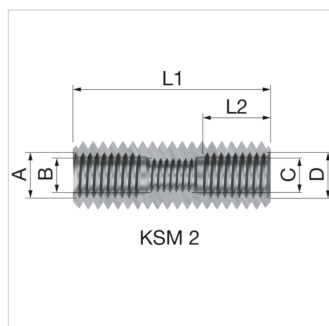
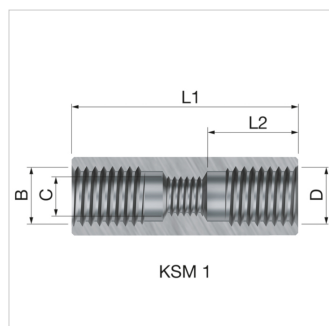



For connecting BK pipe hangers under each other, two threaded rods, or BS universal clips.

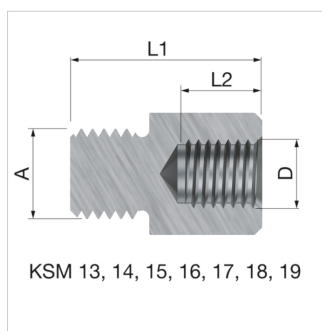
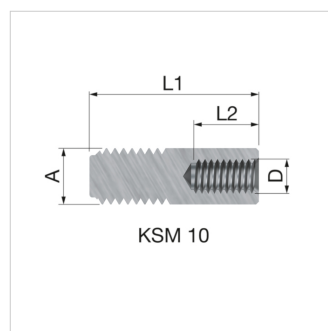
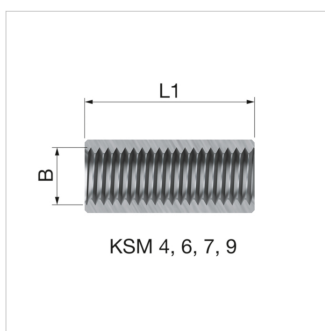
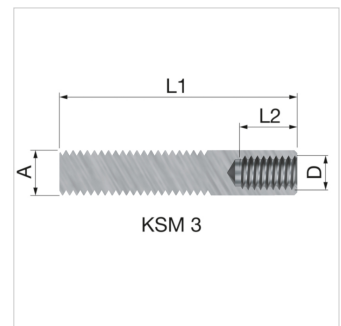
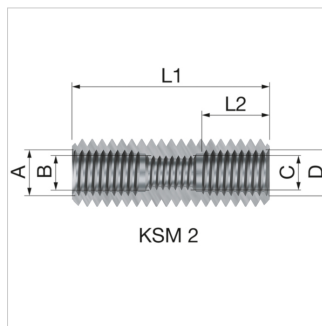
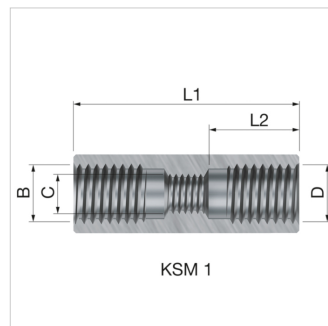
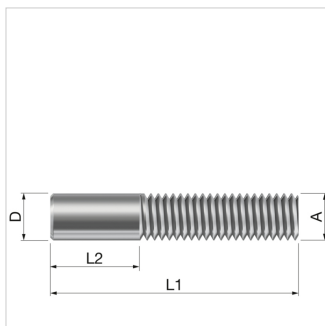


Technical Specifications

- Electrolytically zinc plated.
- As per DIN 13, part 12, rolled thread.



Type	Connection				Dimensions		Shape		Order Code
	A (M)	B (F)	C (F)	D (F)	L 1 [mm]	L 2 [mm]			
KSM 2	M 12	M 8	M 6	M 8	35	10	round	25	70902
KSM 3	M 8	-	-	M 6	42	8	round	25	70903
KSM 4	-	M 10	-	-	30	-	hex.	25	70904
KSM 6	-	M 6	-	-	20	-	hex.	25	70906
KSM 7	-	M 8	-	-	25	-	hex.	25	70907
KSM 9	-	M 12	-	-	30	-	hex.	25	70909
KSM 10	M 10	-	-	M 6	30	10	round	500	70910
KSM 13	M 8	-	-	M 10	22	7	hex.	25	70913
KSM 14	M 10	-	-	M 12	25	7	hex.	25	70917
KSM 15	M 12	-	-	M 10	23	7	hex.	25	70918
KSM 16	M 8	-	-	M 12	23	7	hex.	25	70916
KSM 18	M 16	-	-	M 12	34	12	hex.	25	70920
KSM 19	M 10	-	-	M 8	21.5	8	hex.	25	70921



Find more information online:

[KSM Connectors STEP](#)
[Export catalogue](#)
[Packaging data](#)

Fort Blauwkapel 1
1358 DB, Almere - nl

T +31 (0)36 52 62 300
E info@aalberts-hfc.com
I flamcogroup.com