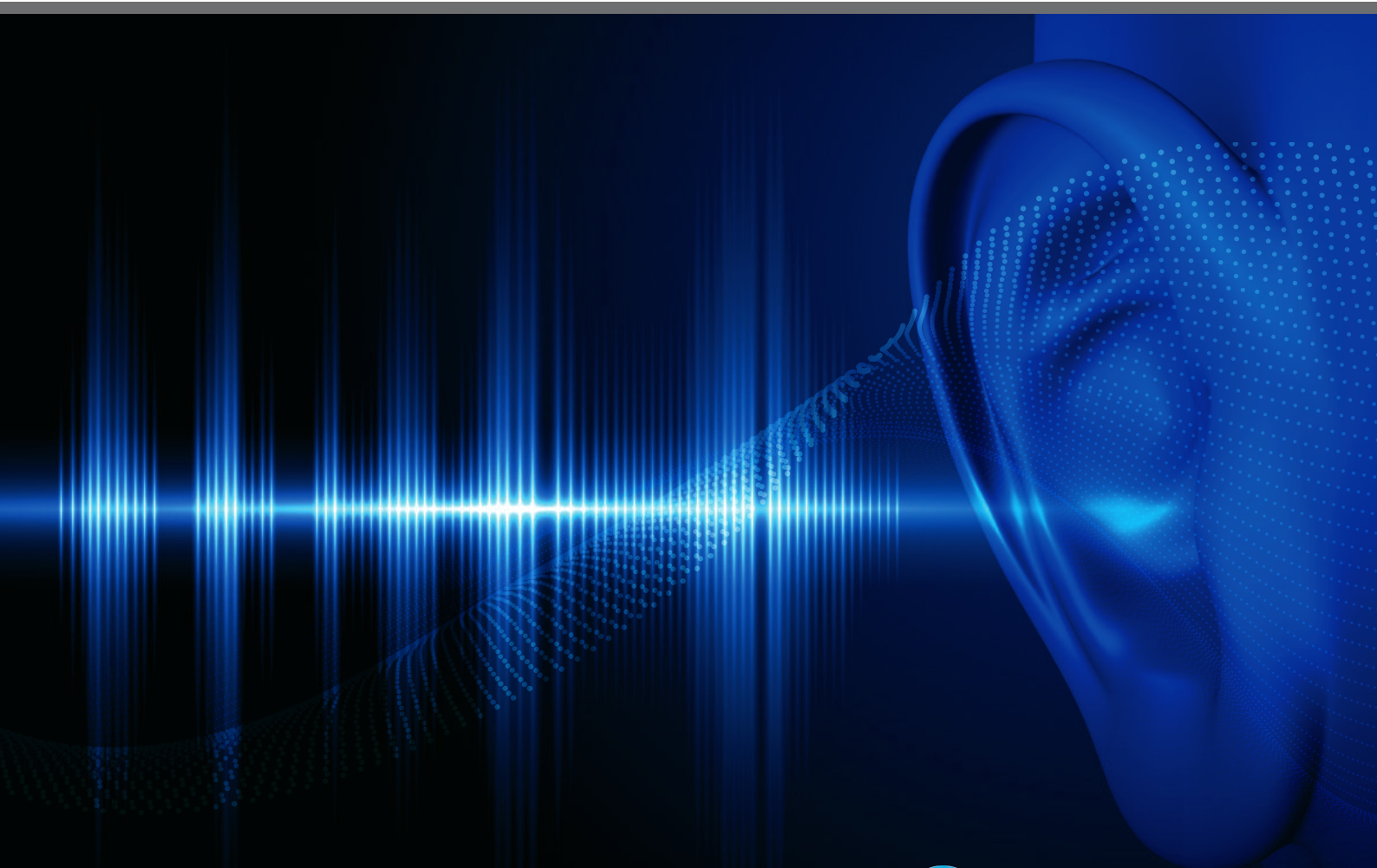


Noise Barrier Composite

FLEXIWRAP

Acoustic Insulation





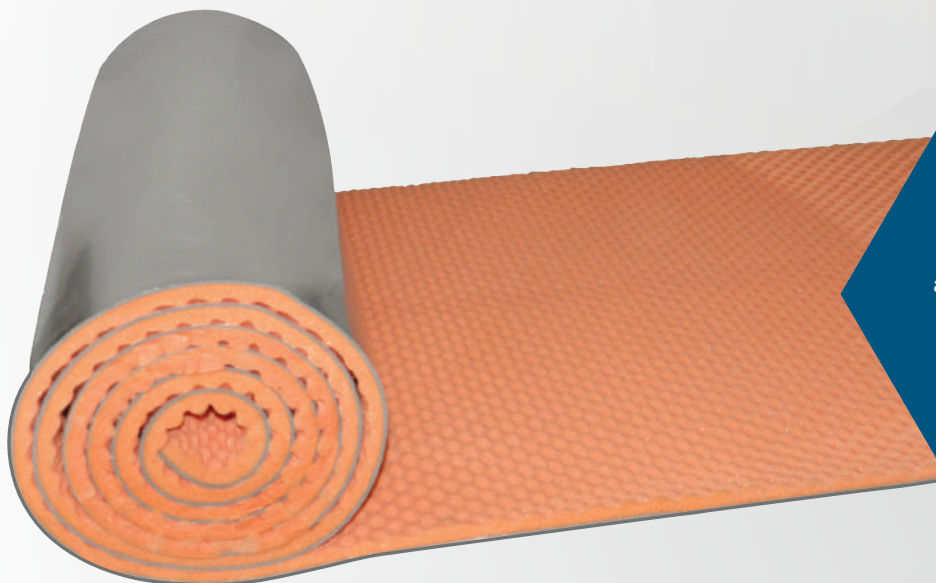
Flexiwrap - Flexible Noise Barrier

Convuluted PU open cell foam bonded to a flexible MLV* acoustic barrier covered with aluminium foil. Flexiwrap has been designed to reduce unwanted noise and to acheive Acoustic comfort.

*MLV(mass loaded vinyl)

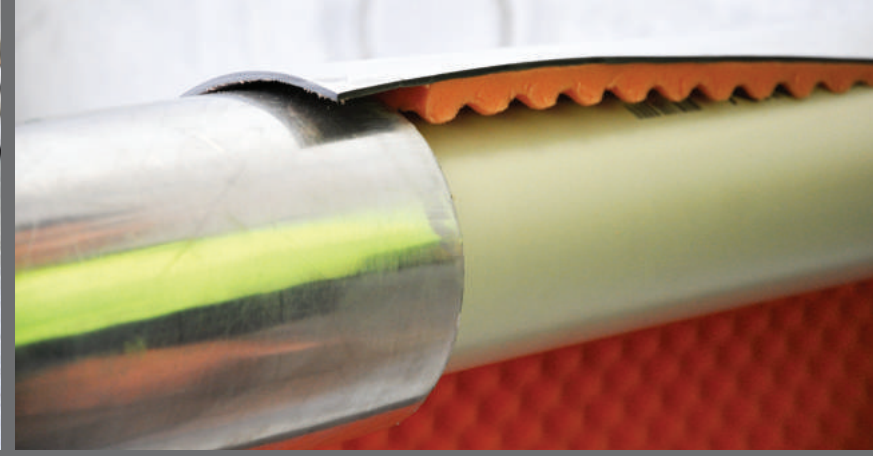
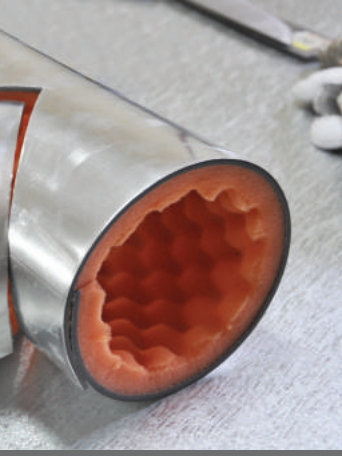
Acoustic comfort

During the construction of a home or an office, we focus our attention to the appropriate standard of the building, air conditioning, proper ventilation, orientation towards cardinal points of the compass, sun exposure or the distance from noise sources, such as busy roads. But often we forget about the thing that is imperceptible – the acoustic comfort. The sounds of ventilation, sanitation, equipment such as lifts and compressors, and of course the sounds generated by our neighbors or even precipitation – all this can cause noise disruption. Providing adequate soundproofing has a substantial impact on our well-being at home, as well as efficiency and concentration at work. The most effective solution is to ensure sound isolation of each room at the stage of construction of the building and use of sound absorptive materials. However, thanks to modern technology, it is possible to increase the acoustic comfort even in projects already completed, for example by using acoustic foams and Sound barriers.



Universal Solution for different acoustic applications such a drain, service and wastewater pipes, vehicle and automotive industries, machinery and construction industries providing a high acoustic performance, durability, flexibility, hygienic properties and long technical life.





Product Features:

Weight: 4kg/m², 5kg/m², 8kg/m², 10kg/m²

Thickness: (20-25mm ± 2)

Roll Size: (1.35m² x 2.5 / 5m)

VOC: (<0.5 mg/m /hr, as per ASTM D5116)

Temp. Range: (-40°C to +100°C) – Mass Loaded Vinyl(MLV) surface.

Accessories:

Alupet Tape

Examples of applications: Covering waste water or drainage pipes, garbage pipes, walls and all kind of partition, ventilation fan covering, compressors units covering, engine & generator compartments, air duct sound insulation (outer surface).

- | | | |
|--|---|--|
|  Sound barrier & Noise Control |  Excellent Acoustic properties |  Easy to Install |
|  Clean & hygienic products |  Long Technical Life |  Fire Safe |
|  Environment Friendly Products |  Cost Saving |  Excellent Thermal Properties |

PROPERTIES

Acoustic Performance – Use of a specially engineered flexible acoustic barrier provides excellent reduction in noise transmission. Designed to be used in multiple applications.

Durability – An aluminum foil barrier provides excellent protection to the product once installed.

Flexibility – Use of a very flexible foam, combined with an acoustic barrier, allows for ease of installation in all applications.

BENEFITS

Highly flexible allowing fast installation times.

Designed to be used in multiple applications. Fibre free non irritant product, requiring no special protective equipment. Low VOC emissions complying with building standards.

FLEXIWRAP

TECHNICAL DATA

Properties	Value / Assessment	Tested acc. to:
Sound Transmission Class (STC)	26 dB	ASTM E90, ASTM E413
Sound Reduction Index R_w	(C;Ctr) = 26 dB (-1;-4) dB	EN ISO 140-3, ASTM E413 ASTM E90
Sound Reduction (wastewater system)	12-14 dB	DIN EN 14366
Fire Properties	Ignitability: 0 Flame Propagation: 0 Heat Release: 0 Smoke Release: 1	AS/NZS 1530.3
	Class O	BS476 Part 6 & Part 7
Color	Silver/ Orange	
Thermal Conductivity	0.042 W/mK	ASTM C518
Total Volatile Organic Compound Emission Rate	<0.5 mg/m ² /hr	ASTM D5116
Operating Temperature Range (°C)	-40 °C to +100 °C	Continuous
Odour	Free from odour	
Size	W: 1350mm, L: 2.5m, 3m & 5m	
Weight	5kg/m ²	
Thickness	20-25mm	
Note: Product does not contain any fibres, asbestos, mercury or lead. 4kg/m ² , 8kg/m ² and 10kg/m ² can be manufacture upon request.		

AUSTRALIAN BUILDING CODE

Section F5.6 of the Building Code of Australia requires that:

“If a duct, soil, waste or water supply pipe, including a duct or pipe that is located in a wall or floor cavity, serves or passes through more than one sole-occupancy unit, the duct or pipe must be separated from the rooms of any sole-occupancy unit by construction with an $RW + Ctr$ (airborne) not less than -

- (i) 40 if the adjacent room is a habitable room (other than a kitchen); or
- (ii) 25 if the adjacent room is a kitchen or non-habitable room.”



KE KELIT NZ Ltd.
0800 4 KE KELIT
0800 4 5353548
info@kekelit.co.nz
www.kekelit.co.nz

