

## KELOX FB KU590W

### ULTRA PE-RT industrial surface manifold pipe 6/4"

- High-quality stainless steel pipe
- Corrosion-resistant and durable
- Installation option for KM596 thermal motor M30x1.5
- High flow rates due to 6/4" manifold bars
- Return flow bar with adjustable flow meter up to 15 l/min



1844/0610  
07LI10/QC532

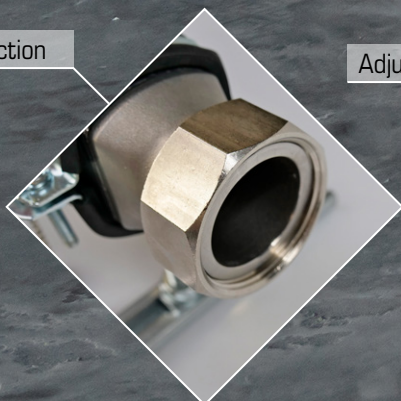
1844/0610  
07LI10/QC532

Bars with markings to  
indicate flow and  
return flow

Sound insulated fixture

6/4" connection

Adjustable flow meter





# KELOX FB KU590E

## ULTRA PE-RT industrial surface manifold pipe 6/4"

### Industrial surface heating for all your plant engineering requirements

Industrial surface heating is the best option for heating industrial buildings on an energy-saving basis.

#### Heating with a minimum energy requirement

When it comes to buildings, heating and cooling systems account for a large portion of the energy used. Radiant heating and cooling lowers the amount of energy used in buildings.

This technology is an excellent match for renewable energy thanks to low system temperatures.

Industrial surface heating using KE KELIT makes possible:

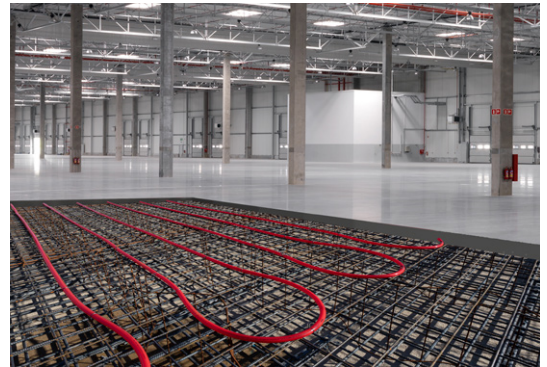
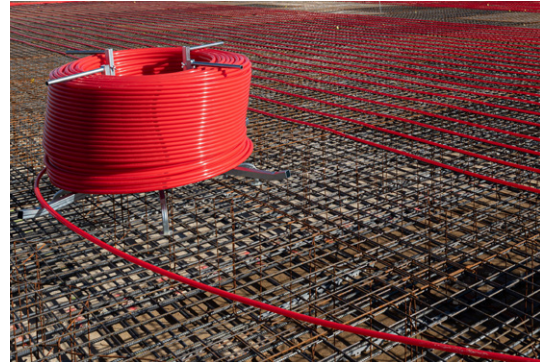
- Energy efficiency
- Lowering costs
- Use of renewable energy

You can install KE KELIT industrial surface heating systems in any floor structure and are highly adaptable to the area of application of your industrial floor.

Regardless of whether you want to use them to heat manufacturing, exhibition or aircraft facilities, workshops, production or storage facilities where fork lift trucks are in use.

Installing KELOX FB pipes in the foundation slab makes possible uniform heating with no visible convectors, heating pipes or distribution boxes.

Image on right: Example of a production building with installed industrial surface heating in a simulated concrete floor structure.



### Benefits

- Flow and return flow bars (6/4") with 2-16 circuits
- Bleeding takes place at the highest point
- Connections with pre-formed, flat-sealing 6/4" union nut
- Flow meter up to 15 l/min, adjustable by simply turning the flow meter after removing the protective cap
- F: Valve with 3/4" Euro cone male thread  
Non-porous metallized brass
- Filling valves are located directly by the manifold bar
- Suitable for KM576 manifold cabinet with metal cover stacking frame
- 6/4" pipe allows applications with high volume flow
- Application area for heating and brine (water-glycol mixture)

#### KE KELIT GmbH

A 4020 Linz, Ignaz-Mayer-Straße 17  
Austria, Europe

**TELEFON** +43 (0) 50 779

**FAX** +43 (0) 50 779 318

**E-MAIL** anwendungstechnik@kekelit.com



www.kekelit.com

