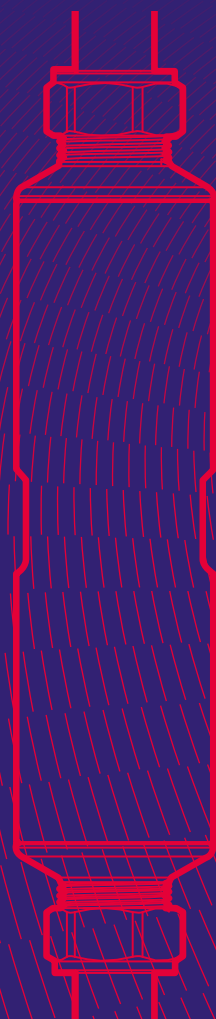


ADEY®



ElectroScale®

Scale Reducer -
15mm and 22mm compression
Installation and servicing



ElectroScale®

Whole House Protection against limescale

ElectroScale has been designed to prevent limescale build-up in homes and small commercial properties. This product is a non-polluting electrolytic water conditioner. The electrolytic cell alters the crystal structure of the limescale as it passes through making it less likely to stick to pipes or other services. *ElectroScale* does not require an electrical power supply.

Installation meets the requirements of Part L of the Building Regulations. This states that provision must be made to treat the feed water to water heaters and hot water circuit of combination boilers to reduce the rate of limescale accumulation.

Technical Specification

	ElectroScale 22mm Compression	ElectroScale 15mm Compression
Connection	22mm copper compression to BS EN 1254-2	15mm copper compression to BS EN 1254-2
Material	External copper body, end caps low lead brass, internal zinc anode	
Maximum operating temperature	Cold feed only	
Minimum operating temperature	3°C	
Maximum working pressure	10 bar	
Length (mm)	206	201
Diameter (mm)	38	38
Weight (g)	900	874
Pressure drop	36.0l/min = 67mbar	25.0l/min = 77mbar
Warranty	10 years	

For the most up to date version of the *MagnaScale* Installation instructions visit adey.com.

Installation

IMPORTANT:

Please read before installation of *ElectroScale* Scale Reducer.

ElectroScale can be installed on both horizontal and vertical pipework.

Where possible do not reuse old pipes.

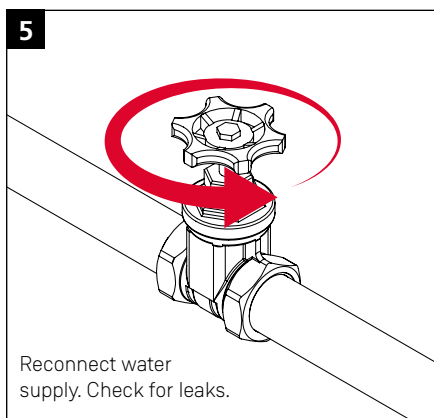
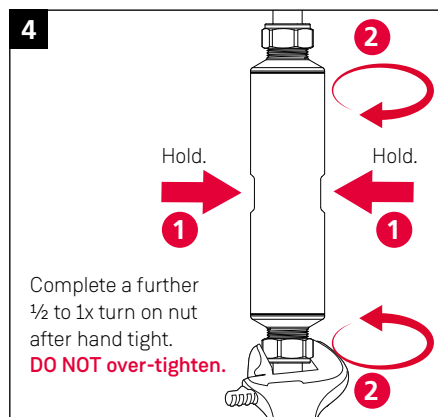
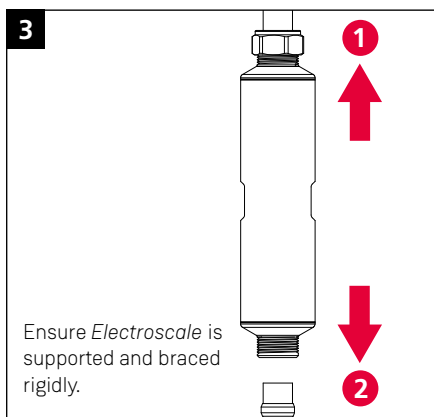
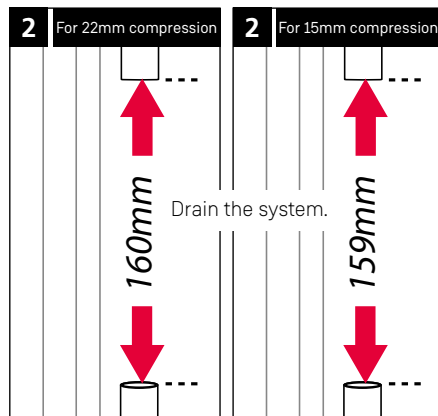
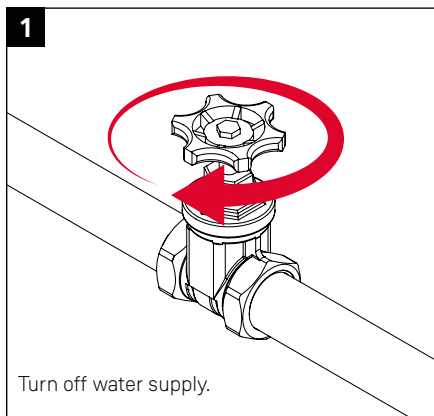
Only WRAS approved jointing compounds should be used.

To maintain earth continuity in accordance with current IEE regulations, when required a suitable earth bonding cable should be fitted to the pipework to bypass the product. Refer to NICEIC 17th edition for more information.

This product must be fitted in accordance with WRAS installation requirements and notes, which can be found on the WRAS website <https://www.wras.co.uk/> under approval number 1610300.

It is recommended that a pressure reducing valve is fitted to the incoming water mains to maintain a constant water pressure at all times.

Installation



KE KELIT NZ Ltd.
0800 4 KE KELIT
0800 4 5353548
climatecontrol@kekelit.co.nz
www.kekelit.co.nz



ADEY

www.adey.com



All ADEY marks are trademarks of Adey Holdings (2008) Limited. Please visit adey.com/trademarks for a list of ADEY marks Copyright Adey Holdings (2008) Limited © 2019. All rights reserved.