



Domestic product range



Contents

ADEY® Best Practice	4
---------------------	---

Filters

<i>MagnaClean Professional3 Sense®</i>	8
<i>MagnaClean Professional2®</i>	12
<i>MagnaClean Micro2®</i>	14
<i>MagnaClean Atom®</i>	16
<i>MagnaClean Professional2XP®</i>	18
<i>MagnaClean TwinTech®</i>	20
<i>MagnaCleanse®</i>	22

Chemicals

<i>MC1+®</i> and <i>MC1+ Rapide®</i> Central Heating System PROTECTOR	26
<i>MC2®</i> and <i>MC2+ Rapide™</i> Central Heating System SILENCER	27
<i>MC3+®</i> and <i>MC3+ Rapide™</i> Central Heating System CLEANER	28
<i>MC4®</i> and <i>MC4+®</i> Central Heating System LEAK SEALER	29
<i>MC5® Rapid Flush®</i> System CLEANER	30
<i>MC10+®</i> and <i>MC10+ Rapide™</i> Underfloor and Central Heating System BIOCID	31
<i>MC Zero®</i> Central Heating System ANTI-FREEZE	32
<i>MC Zero+®</i> Central Heating System ANTI-FREEZE	33
<i>MC 40®</i> Central Heating System CLEANER AND DESCALER	34

Scale reducers

<i>ElectroScale®</i>	35
<i>MagnaScale®</i>	35

Water testing

WaterTest Kit™	37
<i>MC1+®</i> Quick Test	37

ADEY Training Academy	38
-----------------------	----

ADEY® Best Practice

ADEY®, the industry leaders in central heating system maintenance and water treatment, have developed a range of products to help you deliver effective central heating system protection. The ADEY Best Practice approach promotes the process of Clean, *MagnaCleanse*, *MagnaClean*, Protect, Test and Maintain.

ADEY manufactures the largest range of domestic magnetic filters available on the market – from the compact *MagnaClean Micro2*, the best-selling *MagnaClean Professional2* to the *MagnaClean TwinTech*, specifically designed to protect underfloor heating systems.

The *MagnaCleanse* technology represents another breakthrough in central heating system protection. The unique and highly effective flushing system from ADEY transforms traditional power flushing, and when used with the range of MC+ chemicals provides the complete system water treatment solution.

Delivering a fast and reliable service, ADEY's UKAS accredited laboratory sets the highest standards for water testing in the HVAC industry. Producing premium online reports on water quality, the analysis provides explanations of the likely causes of system problems, along with recommendations to restore the heating system to full efficiency.

Developed by experts, ADEY's products and services help you to provide the most professional job, every time.



ADEY Cleaners remove damaging magnetite (black iron oxide sludge) which would otherwise collect in the system and could lead to boiler breakdown, reduced system efficiency and higher heating bills.

MC3+ Central Heating System Cleaner – page 28

MC5 Rapid Flush System Cleaner – page 30



A system flush with *MagnaCleanse* removes suspended black iron oxide and can be achieved in as little as two hours. This provides a more cost effective, efficient and simple flushing solution.

MagnaCleanse – page 22



Installation of the market leading magnetic filter, *MagnaClean*, removes magnetite from the system ensuring ongoing protection and helps extend the life of the boiler.

MagnaClean Filters – page 8-22



The increased strength high performance inhibitor protects against system corrosion and lime scale deposition, maintaining heating efficiency and boiler performance.

MC1+ Central Heating System Protector – page 26



A fast and reliable water test is carried out using the industry's only UKAS accredited laboratory with results returned within 24 hours of receipt of sample.

ADEY's UKAS accredited laboratory sets the highest standard for water testing within the HVAC industry. Producing premium online reports on water quality within 24 hours, the analysis provides assessments of the likely causes of system problems, along with recommendations to restore the heating system to full efficiency.

Water Testing – page 39



In order to ensure ongoing system efficiency, an annual service of the central heating system and *MagnaClean* filter should be conducted.

A water quality analysis should take place with the use of either ADEY's on site MC1+ Quick Test kit, or a full system check with ADEY's Water Test Kit.





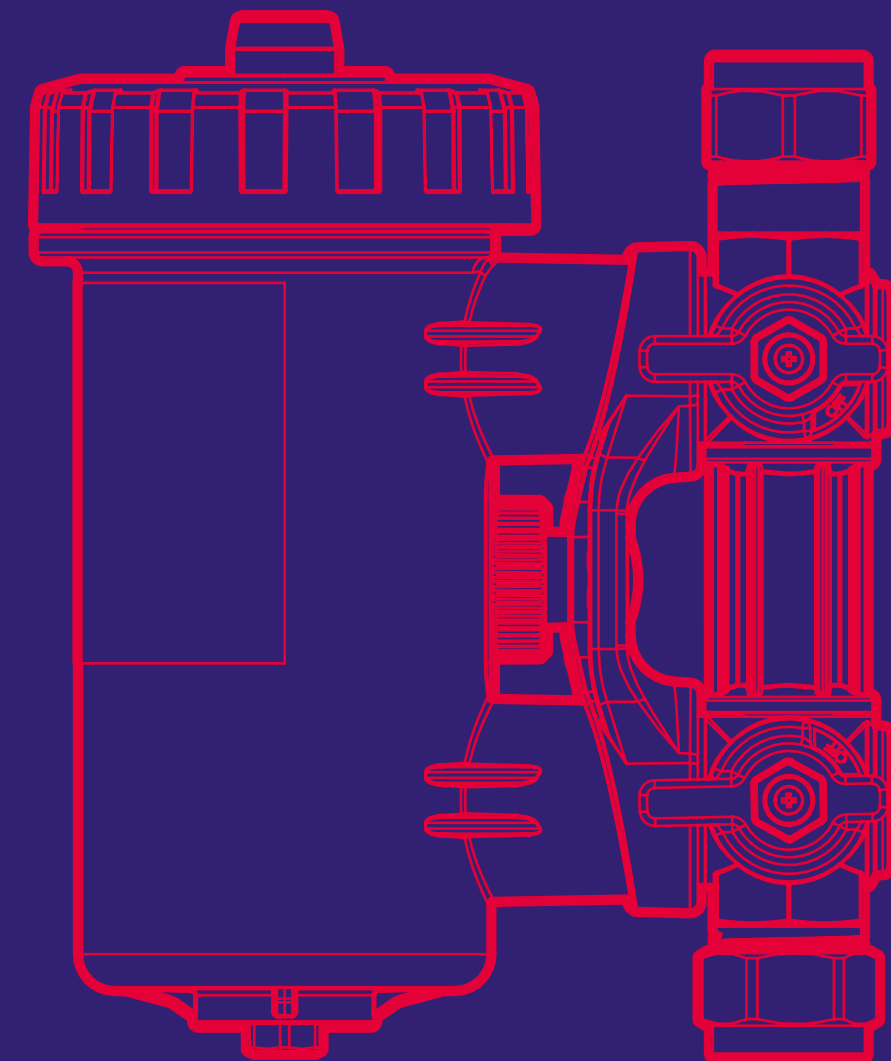
MagnaClean filters

Magnetite is the number one contributor to heating system breakdowns which can be avoided through the installation of magnetic filtration products from ADEY.

Due to the incredibly small particle size of black iron oxide, truly effective filtration can only be achieved by using a strong magnetic core as the primary filtration method. This process will work regardless of the size of particles passing through the heating system. It's therefore no surprise that ADEY have sold over 5 million filters in the UK alone and are used by thousands of heating engineers and recommended by specifiers nationwide.

ADEY's range of market leading filters from *MagnaClean Micro2* to *MagnaClean Professional2XP* specifically targets the removal of magnetite within heating systems. This product range provides ongoing protection and ensures high operational efficiency.

ADEY recognises that heating engineers want to offer their customers quality products and peace of mind for their long-term investment. ADEY filters undergo the equivalent of more than 10 years accelerated life-cycle tests, which, together with a commitment to providing the highest quality components is why the *Micro2* and *Professional2* filters now come with a 10 year complete product warranty.



* 10 year warranty on MagnaClean Professional2 and MagnaClean Micro2 only. T&C's apply. Visit adey.com for more information.

MagnaClean[®]

Professional3 Sense



The revolutionary solution to monitor the health of central heating systems, reducing costly and time-consuming onsite visits. The *MagnaClean Professional3 Sense*[®] gives installers the power to predict heating system breakdowns before they occur and is a smart solution for delivering protective and preventative heating system maintenance.

The *MagnaClean Professional3 Sense* connects via Wi-Fi directly to a smartphone sending system performance alerts to the ADEY *ProClub*[®] App. The filter will regularly analyse the system and provide recommendations to help maintain system health. LED light functionality is also available on the canister indicating the level of magnetite capture.

Homeowner benefits

- **Costs savings** - Can save up to 7% on annual heating bills. The filter ensures heating system is running efficiently and less likely to breakdown helping homeowners to budget*
- **Reassurance** - system is well maintained and less likely to fail
- **Time-saving** - installer can proactively contact homeowner and schedule appointments in advance

ADEY[®] Best Practice essentials:

MC1+[®] Central Heating System PROTECTOR
MC3+[®] Central Heating System CLEANER

Installer benefits

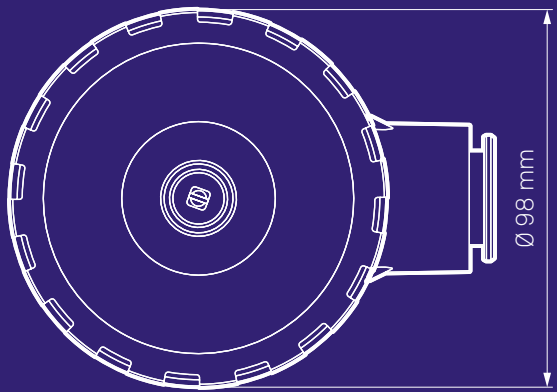
- Hallmark qualities of the *MagnaClean Professional2*[®] filter
- Provides an effective tool to establish a proactive relationship with customers
- Enables the possibility to offer an improved service and retaining existing customers
- Encourages homeowner to remain with the existing installer
- Provides independent validation of issue/service requirement

Fit a filter every time

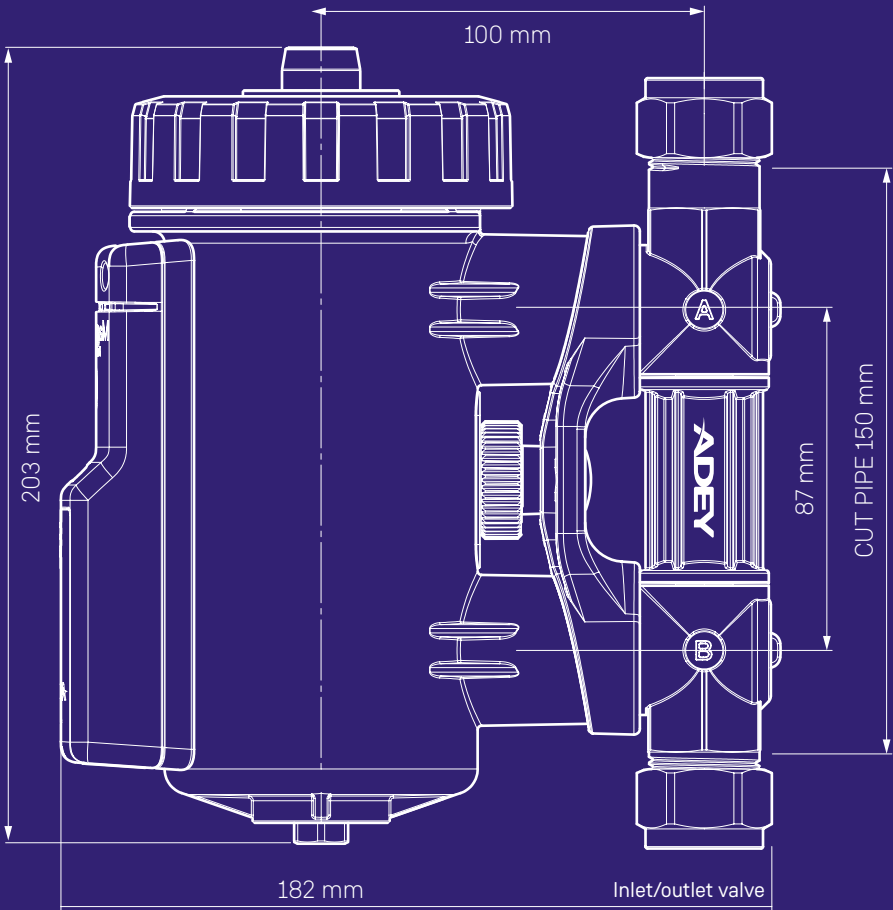
This filter should be fitted in-line on the return pipe. Alternative sitings can be located when the return pipe is not available.

The *MagnaClean Professional3 Sense* is the perfect product for installation on both new and existing heating systems. With the unique *Sense*[®] technology, it provides control and visibility of the heating systems to help extend the operational life of the boiler.

Technical specifications



Canister and lid



Canister and lid

Material: Glass reinforced nylon
Fluid capacity: 550 ml
Inlet diameter: 22 mm at valve
Outlet diameter: 22 mm at valve
Thread: Pressure thread
Flow configuration: Bi-directional
Main lid seal: EPDM
Valve to canister: EPDM

Magnet

Housing: Stainless steel
Length: 150 mm
Diameter: 19 mm

Bleed valve

Body material: Nickel plated brass
Screw: Nickel plated brass
Thread interface: M6
Seals: EPDM

Drain port

Drain plug material: Nickel plated brass
Drain plug thread: M8
Seals: EPDM

Triple seal valves

Body material: Nickel plated brass
Seals material: Long life PTFE ball seals
O ring material: EPDM 70 seals x3
Valve inlet/outlet: 22 mm

Servicing Clearance

Air vent (top): 50 mm
Drain Plug (bottom): 50 mm

Electronic sub-assembly

Enclosure rated to IP52 specification
Battery powered: 2x AA alkaline batteries

Full installation instructions are supplied with each filter and are also available to download from adey.com



ADEY ProClub App - Sense update



ADEY ProClub App - Sense update.
By purchasing a Professional3 Sense filter,
installers can set up and register their installations:

- Alerts when maintenance is required
- Indicates service dates
- Immediate view of system portfolio
- Magnetite level and battery life updates
- Automatic warranty registration

Setting the filter up is simple. By following the step by step process on the App, installers can connect the Pro3 Sense to the customer's Wi-Fi before installing the filter on the heating system.

1

Download the ADEY ProClub App from Google Play or App store

2

Log in to or register on the Adey Proclub App

3

Select the MagnaClean Sense® tile

4

Remove battery tab from filter. We recommend the batteries are replaced every two years

5

Connect the product to the customer's Wi-Fi router following the instructions on the App



MENU
Enables easy navigation of App

ADD A NEW FILTER
To set up the filter

ALERTS
Informs you of the filter status including:
Wi-Fi connection
Magnetite build-up
Service due date
Low battery

FILTER SEARCH FUNCTION
Searches for customers by name or the filter serial number

FILTER STOCKLIST
Displays customers' names, magnetite capture status and the battery level
Select filter to view details

The image shows the ADEY ProClub App dashboard. At the top, the user's name 'Harry Smith' is displayed. Below the name, there is a circular icon of a filter. A red arrow points from the 'ADD A NEW FILTER' button to the filter icon. Below the filter icon, there is a button labeled 'ADD A NEW FILTER'. Below this button, there is a section titled 'YOU HAVE 2 ALERTS' with two alerts listed: 'Adey 1 Wi-Fi Connection Successful Pro3-20000298' and 'Adey 1 Device Cleared Pro3-20000298'. Below the alerts, there is a table with columns 'Customer', 'Magnetite', and 'Batt'. The table contains three rows of data for 'Adey 1', 'Adey 2', and 'Adey 3'. Below the table, there is a red navigation bar with icons for home, notifications, calendar, and user profile.

MAGNETITE CAPTURE GAUGE
Green = Magnetite capture level is low
Amber = Magnetite capture level is medium
Red = Magnetite capture level is high

INFORMATION
Informs the installer about how the system is performing, including recommended courses of action where appropriate

HOMEOWNER CONTACT
Access customer contact details

REMOVE FILTER FUNCTION
Delete filters that you no longer service

FACTORY RESET
Restores the product to an 'out of box' state
The filter is disconnected from the Wi-Fi and is deleted from the Installer dashboard

The image shows the 'Filter details' screen of the ADEY ProClub App. At the top, the filter's serial number 'Pro3-40000197' is displayed. Below the serial number, there is a magnetite capture gauge with a needle pointing to the 'Green' section. Below the gauge, there is a section titled 'INFORMATION' with the following details: 'Last date reading: 02/01/2019', 'Annual service due: 02/01/2020', 'Magnetite capture at last read: Filter protecting Central heating System', and 'Filter warranty expiry date: 02/05/2029'. Below the information, there is a section titled 'ACTION' with three buttons: 'HOMEOWNER CONTACT', 'DELETE FILTER', and 'FACTORY RESET'. Red arrows point from the 'MAGNETITE CAPTURE GAUGE', 'INFORMATION', 'HOMEOWNER CONTACT', 'REMOVE FILTER FUNCTION', and 'FACTORY RESET' text blocks to their respective elements on the screen.

The App includes an easy to use dashboard showing an overview of all the properties within the installer's portfolio. A top-level analysis shows the customer information, the level of magnetite and the battery level. This allows installers to monitor all of their properties and ensure all systems are healthy.

Taking a step further into the in-app analysis, installers can view a gauge of how healthy a specific system is. The installer can see when the last reading was taken, when the annual service is due and any recommendations for the system. Within this section, the installer can also find the homeowner details, remove the filter from their dashboard or factory reset the filter completely.

MagnaClean[®] Professional2



It's no wonder the *MagnaClean Professional2* is the market leading magnetic filter due to its power and capacity to specifically target the removal of magnetite within central heating systems.

The unique design of the *MagnaClean Professional2* maximises first pass capture, actively trapping any circulating debris therefore providing year-round protection for the whole system. *MagnaClean Professional2* is the first-choice filter for thousands of UK installers, delivering exceptional domestic central heating system protection.

Homeowner benefits

- 6% annual saving on heating bills*
- Immediate ongoing system protection
- Extended system life
- Reduced carbon emissions

Installer benefits

- In-line installation can be completed in just two minutes
- 360° rotational valves providing multiple installation options
- Bi-directional flow so either port can be an inlet for increased flexibility
- Ultra-thin sheath to enhance magnetic capture performance
- Low profile drain valve designed for easier servicing and dosing
- Twin reverse flow that maximises debris capture
- Improved sheath design for dual non-magnetic capture
- Rapid fit connectors for faster servicing

Fit a filter every time

MagnaClean Professional2 should be fitted in-line on the return pipe. Alternative sitings can be located when the return pipe is not available.

ADEY always recommends that a magnetic filter be installed on both new and existing systems to extend the operational life of the boiler as well as reduce maintenance call-outs and heating bills.

ADEY Best Practice essentials:

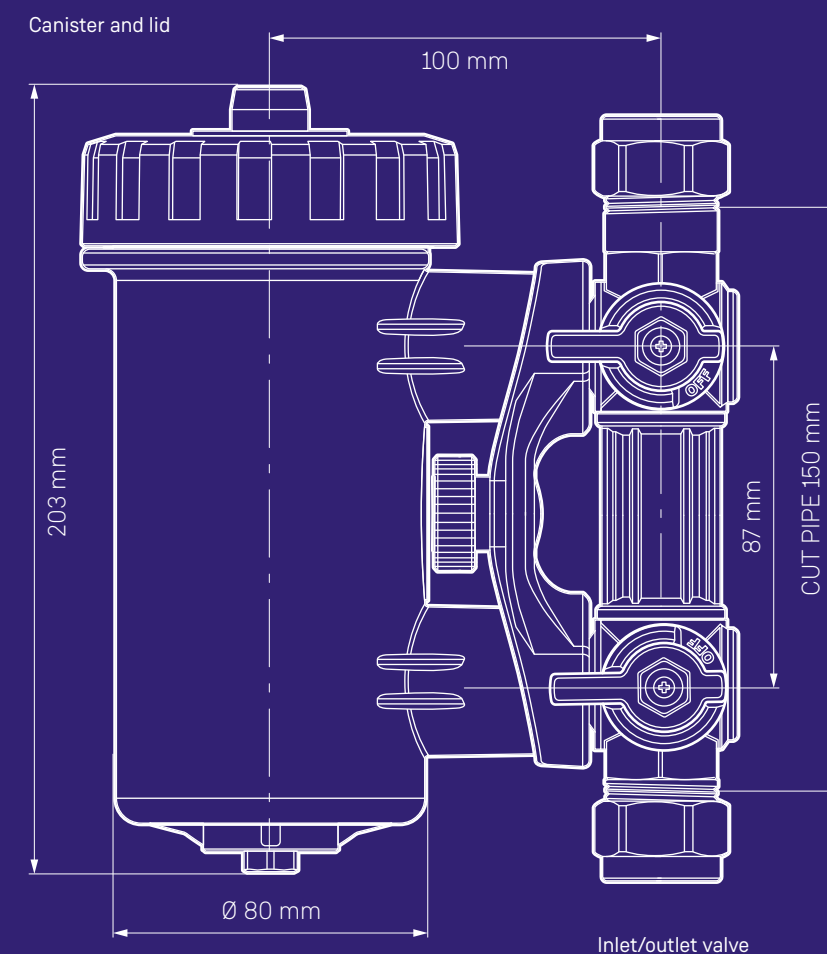
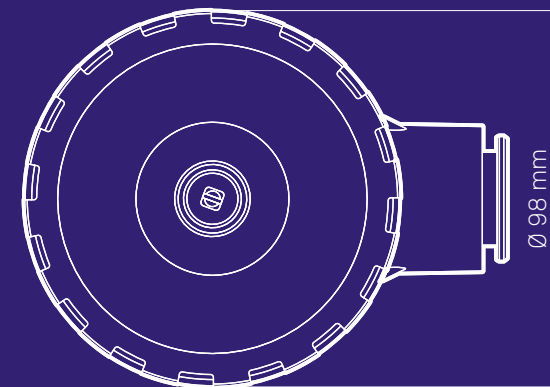
MC1+ Central Heating System PROTECTOR - page 20
MC3+ Central Heating System CLEANER - page 22



MagnaClean

* For a typical three-bedroom property based on independent research.

Technical specifications



Canister and lid

Material: Glass reinforced nylon
Fluid capacity: 550 ml
Inlet diameter: 22 mm at valve
Outlet diameter: 22 mm at valve
Thread: Pressure thread
Flow configuration: Bi-directional
Main lid seal: EPDM
Valve to canister: EPDM

Magnet

Housing: Stainless steel
Length: 150 mm
Diameter: 19 mm

Bleed valve

Body material: Nickel plated brass
Screw: Nickel plated brass
Thread interface: M6
Seals: EPDM

Drain port

Drain plug material: Nickel plated brass
Drain plug thread: M8
Seals: EPDM

Triple seal valves

Body material: Nickel plated brass
Seals material: Long life PTFE ball seals
O ring material: EPDM 70 seals x3
Valve inlet/outlet: 22 mm

Servicing Clearance

Air vent (top): 50 mm
Drain Plug (bottom): 50 mm

Full installation instructions are supplied with each filter and are also available to download from adey.com

MagnaClean[®] Micro2



Compact in design, the *MagnaClean Micro2* is a double action filter that targets the removal of magnetite in smaller central heating systems.

MagnaClean Micro2 delivers exceptional protection against the damaging effects of black iron oxide sludge and non-magnetic debris and is ideal for compact installations where space is limited.

Homeowner benefits

- 6% annual saving on heating bills*
- Immediate ongoing system protection
- Extended system life
- Reduced carbon emissions

Installer benefits

- High performance compact filter making it ideal for tight spaces
- In-line installation can be completed in just two minutes
- 360° rotational valves providing multiple installation options
- Bi-directional flow so either port can be an inlet for increased flexibility
- Ultra-thin sheath to enhance magnetic capture performance
- Low profile drain valve designed for easier servicing and dosing
- Twin reverse flow that maximises debris capture
- Improved sheath design for dual non-magnetic capture
- Rapid fit connectors for faster servicing

Fit a filter every time

MagnaClean Micro2 should be fitted in-line on the return pipe. Alternative sitings can be located when the return pipe is not available.

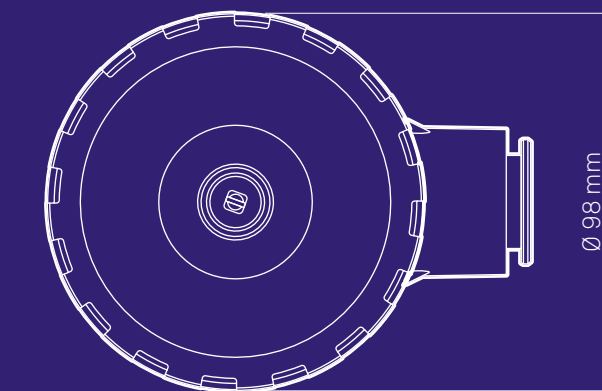
ADEY always recommends that a magnetic filter be installed on both new and existing systems to extend the operational life of the boiler as well as reduce maintenance call-outs and heating bills.

ADEY Best Practice essentials:

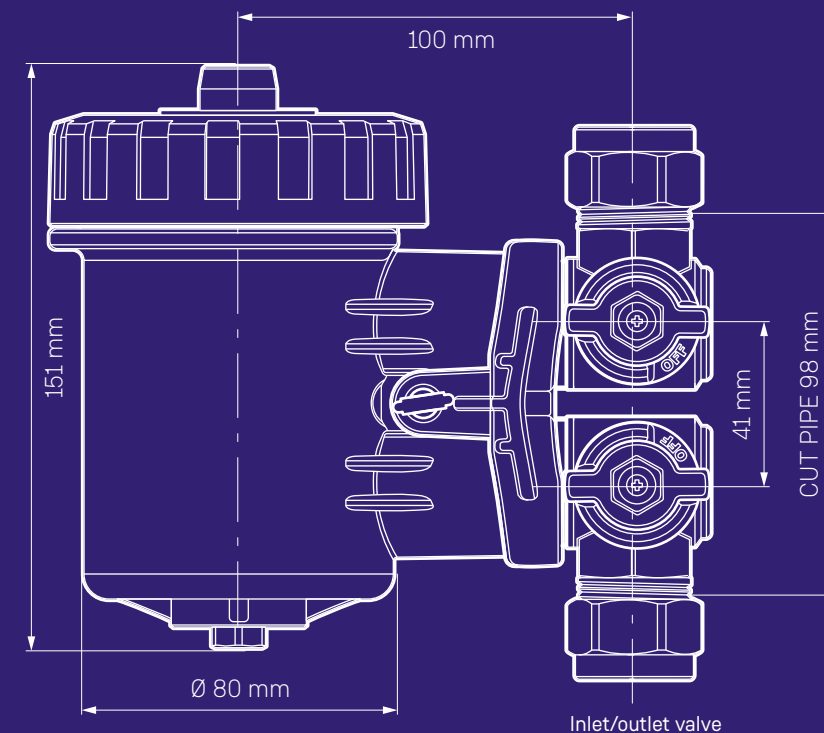
MC1+ Central Heating System PROTECTOR - page 20

MC3+ Central Heating System CLEANER - page 22

Technical specifications



Canister and lid



Inlet/outlet valve

Canister and lid

Material: Glass reinforced nylon
Fluid capacity: 250 ml
Inlet diameter: 22 mm at valve
Outlet diameter: 22 mm at valve
Thread: Pressure thread
Flow configuration: Bi-directional
Main lid seal: EPDM
Valve to canister: EPDM

Magnet

Housing: Stainless steel
Length: 97.5 mm
Diameter: 19 mm

Bleed valve

Body material: Nickel plated brass
Screw: Nickel plated brass
Thread interface: M6
Seals: EPDM

Drain port

Drain plug material: Nickel plated brass
Drain plug thread: M8
Seals: EPDM

Triple seal valves

Body material: Nickel plated brass
Seals material: Long life PTFE ball seals
O ring material: EPDM 70 seals x3
Valve inlet/outlet: 22 mm

Servicing Clearance

Air vent (top): 50 mm
Drain Plug (bottom): 50 mm

Full installation instructions are supplied with each filter and are also available to download from adey.com



MagnaCleanTM Atom



The new *MagnaClean Atom*TM the super compact, space saving filter. Developed with installers for even the tightest of installations.

MagnaClean Atom protects the central heating system against the damaging effects of black iron oxide sludge. The super compact design provides an opportunity to fit a filter into previously inaccessible spaces

Homeowner benefits

- 6% annual saving on heating bills*
- Immediate ongoing system protection
- Extended system life
- Reduced carbon emissions

Installer benefits

- Only 115mm pipe cutout length needed to install so can fit into even the tightest of spaces
- Fits vertical and horizontal pipework for additional flexibility
- Filter can be switched to bypass so no need to turn off the heating system when servicing
- Supplied fully assembled and ready for installation saving time on-site
- Slip socket design to allow easy installation
- Quick and easy chemical dosing using ADEY Rapide[®]

Fit a filter every time

MagnaClean Atom should be fitted in-line on the return pipe. Alternative siting's can be located when the return pipe is not available.

ADEY always recommends that a magnetic filter be installed on both new and existing systems to extend the operational life of the boiler as well as reduce maintenance call-outs and heating bills.

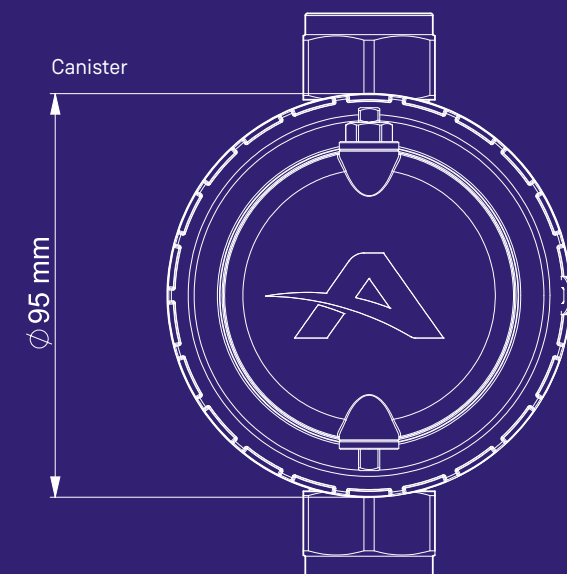
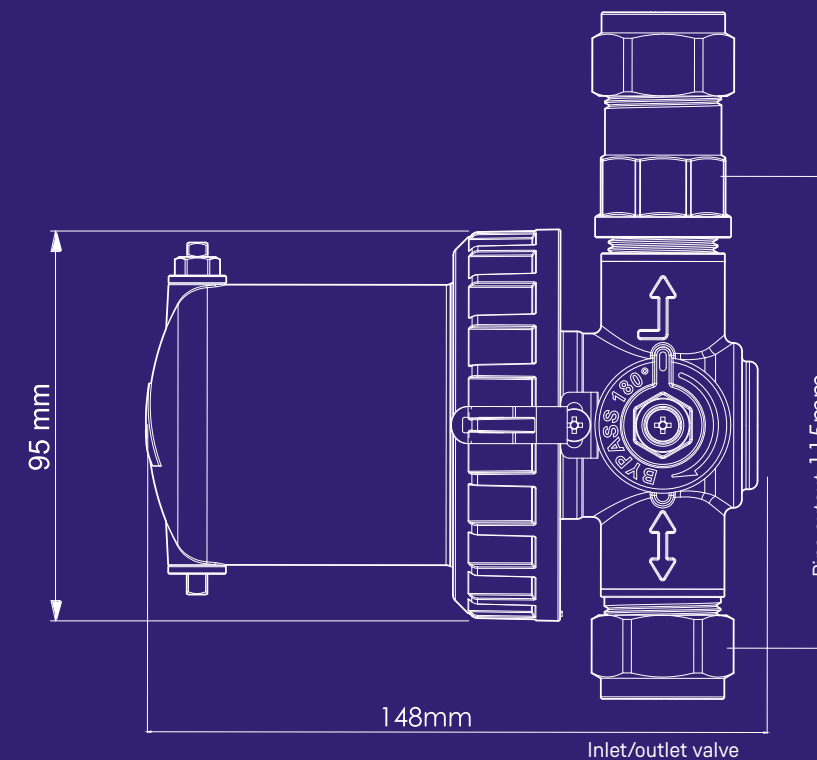
ADEY Best Practice essentials:

*MC1+ Rapide*TM Central Heating System PROTECTOR
*MC3+ Rapide*TM Central Heating System CLEANER



MagnaClean

Technical specifications



Canister

Material: Glass reinforced polymer
Fluid capacity: 230 ml
Inlet diameter: 22mm compression
Outlet diameter: 22mm compression
Thread: Pressure thread
Flow configuration: Uni-directional
Main lid seal: EPDM
Valve to canister: EPDM

Magnet

Length: 82.5 mm
Diameter: 20 mm

Bleed valve and drain port

Material: Brass
Thread interface: M8 (non-standard)
Seals: EPDM

Bleed Nipple

Material: Brass
Thread interface: M6

Servicing Clearance

Air vent (top): 20 mm
Drain Plug (bottom): 30 mm

Packaging and handling:

Packaged in single units with all components included

Storage:

No special storage requirements necessary

Internal water operating temperature:
3°C to 95°C

Internal operating water pressure:
up to 4.5 bar

Maximum flow rate: 50 L/min

Full installation instructions are supplied with each filter and are also available to download from adey.com

MagnaClean[®]

Professional2XP



MagnaClean Professional2XP has a larger filter capacity to remove greater volumes of magnetite and is the perfect solution for larger central heating systems.

MagnaClean Professional2XP delivers protection against the damaging effects of black iron oxide sludge and non-magnetic debris. Unlike other filters, it features; specially designed 28mm valves, ultra-thin sheath, dual capture chambers, larger canister and sludge capacity, enabling it to capture and remove greater volumes of debris produced by larger systems with more radiators.

Homeowner benefits

- 6% annual saving on heating bills*
- Immediate ongoing system protection
- Extended system life
- Reduced carbon emissions

Installer benefits

- Designed for larger heating systems
- Greater filter capacity
- Unique, full-flow 28mm valves
- 360° rotational valves providing multiple installation options
- Bi-directional flow so either port can be an inlet for increased flexibility
- Ultra-thin sheath to enhance magnetic capture performance
- Low profile drain valve designed for easier servicing and dosing
- Improved sheath design for dual non-magnetic capture
- Rapid fit connectors for faster servicing

Fit a filter every time

MagnaClean Professional 2XP should be fitted in-line on the return pipe. Alternative sitings can be located when the return pipe is not available.

ADEY always recommends that a magnetic filter be installed on both new and existing systems to extend the operational life of the boiler as well as reduce maintenance call-outs and heating bills.

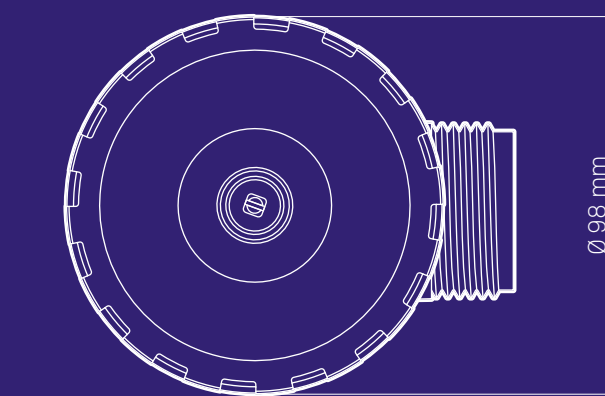
ADEY Best Practice essentials:

MC1+ Central Heating System PROTECTOR - page 20

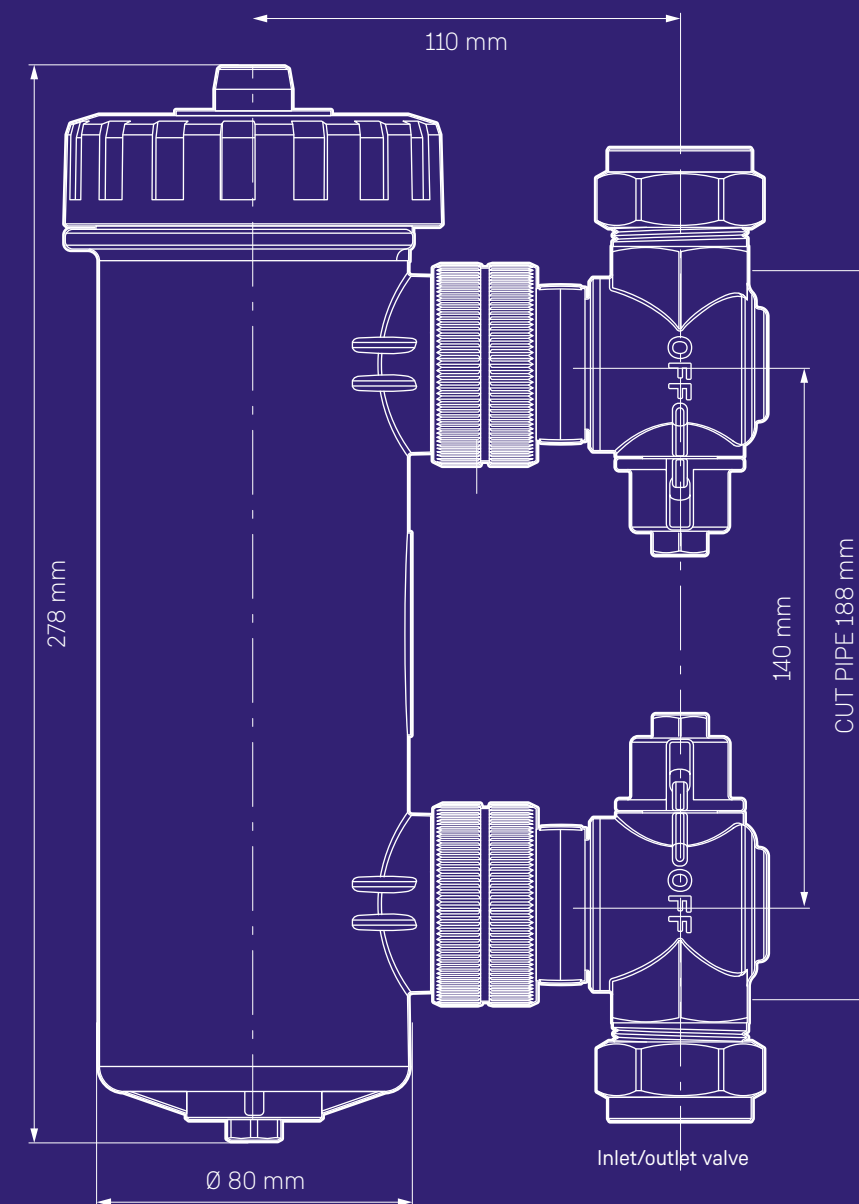
MC3+ Central Heating System CLEANER - page 22



Technical specifications



Canister and lid



Canister and lid

Material: Glass reinforced nylon
 Fluid capacity: 840 ml
 Inlet diameter: 28 mm at valve
 Outlet diameter: 28 mm at valve
 Thread: Pressure thread
 Flow configuration: Bi-directional
 Main lid seal: EPDM
 Valve to canister: EPDM

Magnet

Housing: Stainless steel
 Length: 225 mm
 Diameter: 19 mm

Bleed valve

Body material: Nickel plated brass
 Screw: Nickel plated brass
 Thread interface: M6
 Seals: EPDM

Drain port

Drain plug material: Nickel plated brass
 Drain plug thread: M8
 Seals: EPDM

Triple seal valves

Body material: Nickel plated brass
 Seals material: Long life PTFE ball seals
 O ring material: EPDM 70 seals x3
 Valve inlet/outlet: 28 mm

Servicing Clearance

Air vent (top): 50 mm
 Drain Plug (bottom): 50 mm

Full installation instructions are supplied with each filter and are also available to download from adey.com

MagnaClean[®] TwinTech



MagnaClean TwinTech is a powerful dual-action filter capturing magnetic and non-magnetic debris as well as biological films. Specifically designed for use with underfloor heating systems.

MagnaClean TwinTech delivers protection against the damaging effects of black iron oxide sludge and non-magnetic debris. The dual combination of the high performance magnetic filter and advanced fine wire gauze eliminates both the magnetic sludge along with non-magnetic debris and biological films, making it ideal for use within underfloor systems.

Installer benefits

- Dual-action system protection
- Exceptional magnetic capture
- Stainless steel gauze for efficient biological film removal
- Ideal for use with underfloor heating systems.
- One-way valve for simple chemical dosing
- Simple installation and servicing

Homeowner benefits

- 6% annual saving on heating bills*
- Immediate ongoing system protection
- Extended system life
- Reduced carbon emissions

Fit a filter every time

MagnaClean TwinTech should be fitted in-line on the return pipe. Alternative sitings can be located when the return pipe is not available.

ADEY always recommends that a magnetic filter be installed on both new and existing systems to extend the operational life of the boiler as well as reduce maintenance call-outs and heating bills.

ADEY Best Practice essentials:

MC1+ Central Heating System PROTECTOR - page 20

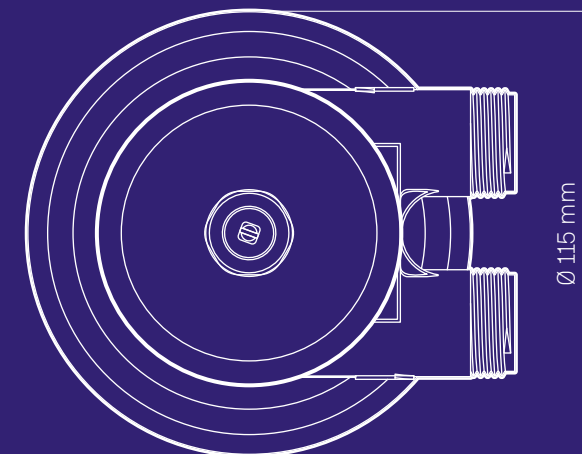
MC3+ Central Heating System CLEANER - page 22

MC10+ Underfloor and Central Heating System BIOCID - page 25

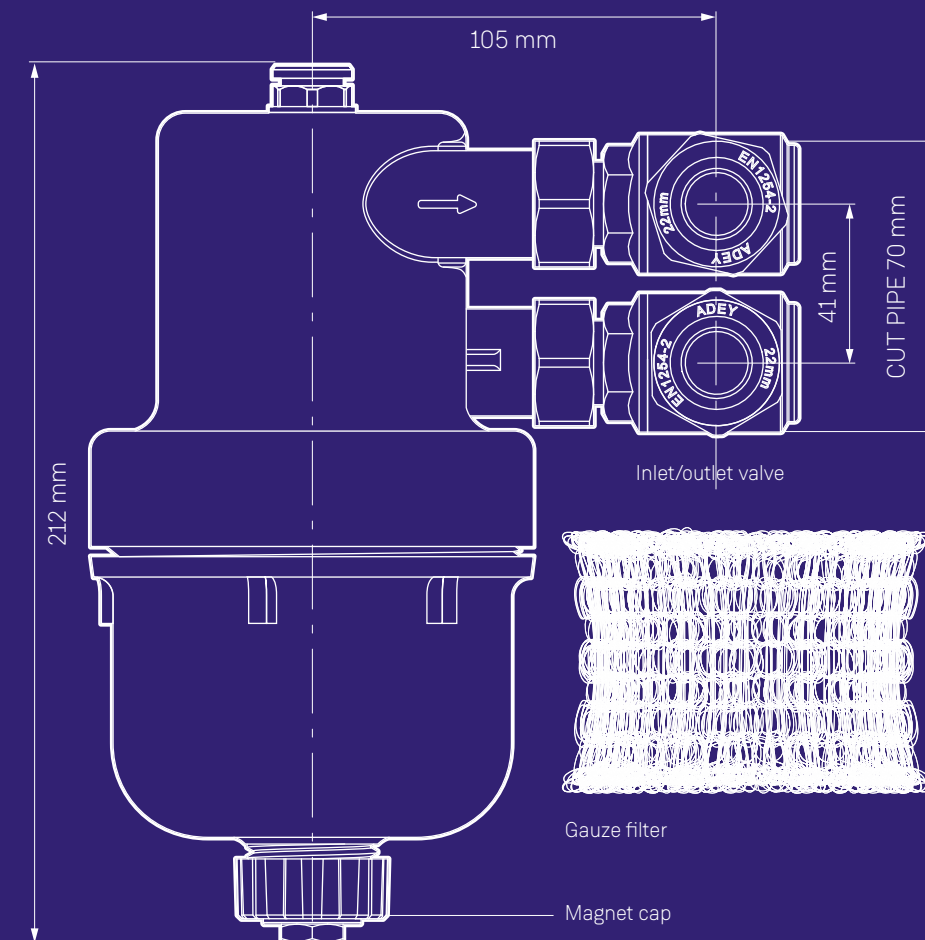


MagnaClean

Technical specifications



Canister and lid



Canister and lid

Material: Glass fibre reinforced nylon
Fluid capacity: 340 ml (chemical bowl)
Inlet diameter: 22 mm at valve
Outlet diameter: 22 mm at valve
Thread: Pressure thread
Flow configuration: Flow must enter the bottom port and exit the top port

Magnet

Housing: Stainless steel
Length: 150 mm
Diameter: 25 mm

Bleed valve

Body material: Nickel plated brass
Screw: Nickel plated brass
Retainer: Nickel plated brass
Ball: Stainless steel
Spring: Stainless steel
Outer hex: 22 mm

Triple seal valve

Body material: Nickel plated brass
Seals material: Long life PTFE ball seals
O ring material: Nitrile 70
Valve inlet/outlet: 22 mm

Servicing Clearance

Air vent (top): 50 mm
From magnet cap (bottom): 95 mm

Wire gauze

Material: Stainless steel
Diameter: Approximately 90 mm

Full installation instructions are supplied with each filter and are also available to download from adey.com

MagnaCleanse®

Magnetite (black iron oxide) is the number one contributor to central heating system breakdowns. **MagnaCleanse** targets its removal and, combined with the implementation of ADEY's Best Practice, provides an extremely effective solution for the ongoing protection of central heating systems.

The use of the *MagnaCleanse* kit delivers a fast and effective flushing process that removes damaging magnetite and non-magnetic material from central heating systems.

Installer benefits

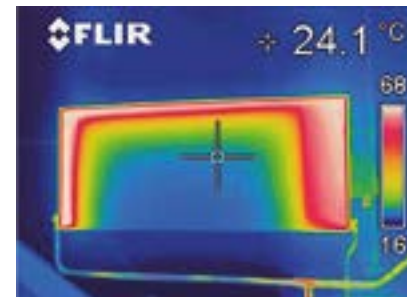
- Removes suspended magnetite in as little as 2 hours
- Cleaner remains concentrated within the system throughout the flushing process
- System water remains heated during the cleaning process, giving a fast and more effective clean
- Saves water as drain down is only required at the end of the cleaning process
- For optimum results use with ADEY's MC5 *RapidFlush* System Cleaner

ADEY's drain valve provides greater control and flexibility during the flushing process. Installed onto the *RapidFlush* filter's lower inlet hose, the valve delivers the following benefits:

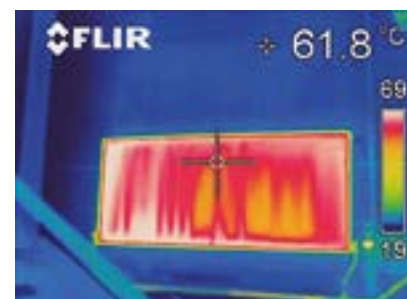
- Release system pressure
- Simple and easy cleaning and disconnection of the *RapidFlush* filter
- Easy flushing of residual cleaner from the system
- Assisting in cleansing the system of non-ferrous particles

VibraClean®

ADEY's *VibraClean*® radiator agitator forms an essential part of the *MagnaCleanse* flushing process. The precision agitator liberates sludge and hardened deposits without the need to remove the radiator. Using *VibraClean* in conjunction with the *MagnaCleanse* not only speeds up the process, but significantly contributes to a higher quality system flush. It is possible to remove more sludge in 20 seconds with *VibraClean* than in 30 minutes without it.



Before system flush.



After MagnaCleanse system flush

Kit Contents

The complete *MagnaCleanse* kit gives everything needed to carry out a full system flush:

- 1x *MagnaCleanse* *RapidFlush* filter
- 1x *VibraClean*
- 1x *MagnaCleanse* hose-to-valve connector
- 2x Hose lengths
- 6x Hose clamps
- 4x Female cam locks
- 1x Drain valve





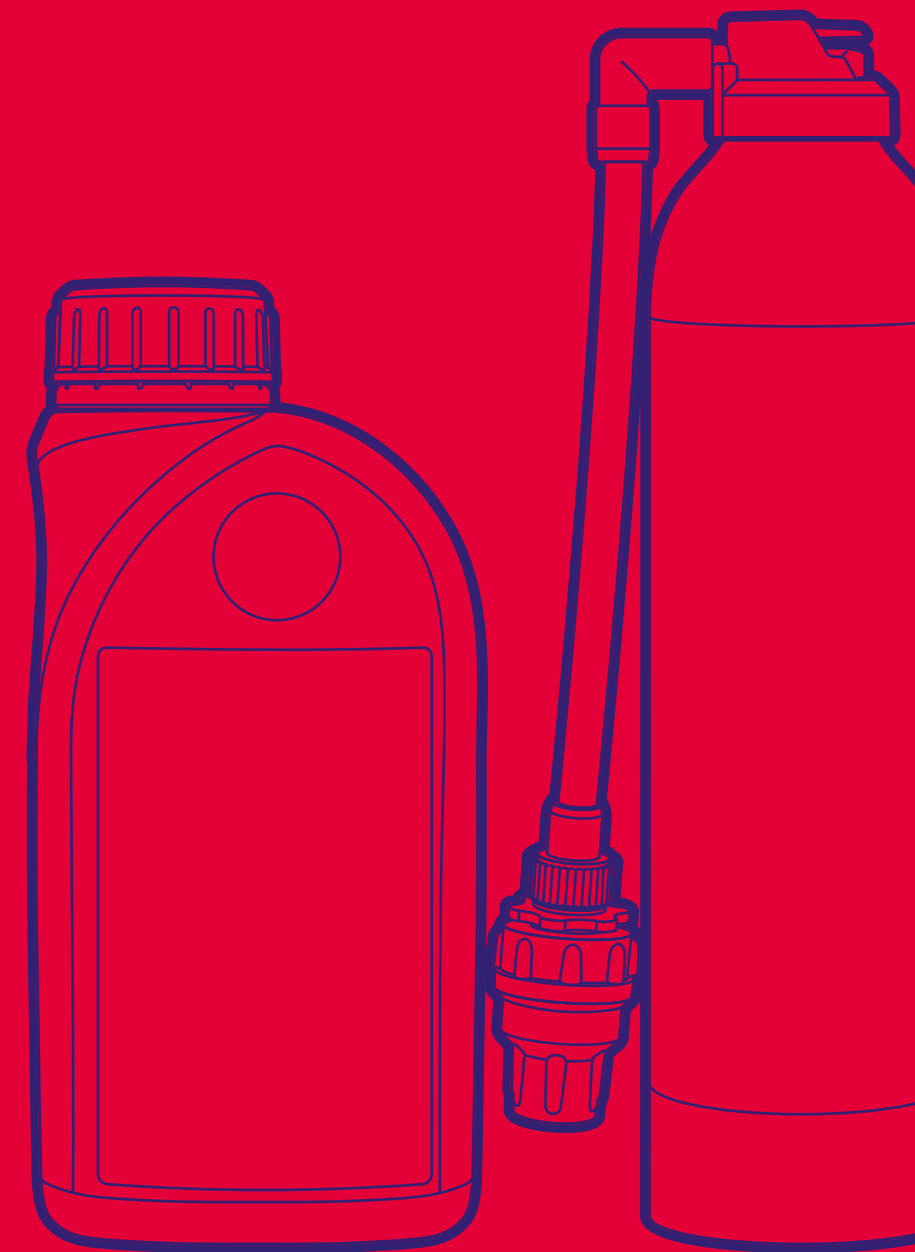
Award winning chemicals

Whether it's market leading filters or award winning chemicals, we design and manufacture effective solutions for protecting the nation's heating systems.

ADEY's advanced chemical range has been created to provide a solution for the maintenance and protection of central heating systems. The MC+ range has been specifically designed for use by professional installers as part of ADEY's 6 step Best Practice approach to central heating system protection.

ADEY's pioneering work in maintaining and protecting the nation's central heating systems has been rewarded with a second Queen's Award for Innovation. The award specifically recognises the development of new chemical formulations for the MC1+ Protector and MC3+ Cleaner range of products, uniquely designed to work in tandem with ADEY's market leading MagnaClean filters.

The chemicals are available in bottles or via the Rapide canisters.



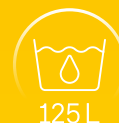
MC1+TM MC1+TM *Rapide*

Central Heating System PROTECTOR

High performance MC1+ Protector prevents both system corrosion and limescale deposition. It maintains boiler and system efficiency and prevents the formation of sludge and scale, contributing to a longer system life.

- Best in class formulation for mild steel protection to prevent magnetite generation
- Every bottle of MC1+ is performance tested
- Protects against corrosion and scale
- Increased strength high performance inhibitor
- Maintains heating efficiency
- Helps reduce heating costs and maintenance bills
- Suitable for all heating systems
- Compatible with all metals
- Part L Building Regulation compliant
- The MC1+ bottle can be dosed into the system through the MagnaClean filter
- MC1+ Rapide can be injected into the system via the radiator, air vent or boiler filling loop and can be completed in as little as 20 seconds
- Treats 125 litres which is up to 15 standard radiators, 25% more than other brands
- Available in 500ml bottle and 300ml Rapide canister

Compatible with BS7593 and BuildCert CIAS approved.



Protect

MC2TM MC2+TM *Rapide*

Central Heating System SILENCER

MC2+ Silencer effectively reduces boiler noise and restores heat efficiency.

- Reduces boiler noise
- Suitable for all heating systems
- Compatible with all metals
- The MC2 bottle can be dosed into the system through the MagnaClean filter
- MC2+ Rapide can be injected into the system via the radiator, air vent or boiler filling loop, and can be completed in as little as 20 seconds
- MC2+ Rapide treats 125 litres which is up to 15 standard radiators, 25% more than other brands
- Available in 500ml bottle and 300ml Rapide canister



Protect

MC3+TM MC3+TM *Rapide*

Central Heating System CLEANER

MC3+ is a rapid performing and powerful chemical cleaner specially designed to remove central heating system sludge and debris.

MC3+ starts to work as quickly as one hour after application. For maximum flexibility, it can be left in the system for up to 28 days.

- Removes sludge, debris and scale
- High performance chemical cleaner
- Restores heating efficiency
- High concentrate formula
- Helps reduce heating and maintenance bills
- Suitable for all heating systems
- Part L Building Regulation compliant and compatible with BS7593
- The MC3+ bottle can be dosed into the system through the *MagnaClean* filter
- MC3+ *Rapide* can be injected into the system via the radiator, air vent or boiler filling loop and can be completed in as little as 20 seconds
- MC3+ *Rapide* treats 125 litres which is up to 15 standard radiators, 25% more than other brands
- Available in 500ml bottle and 300ml *Rapide* canister

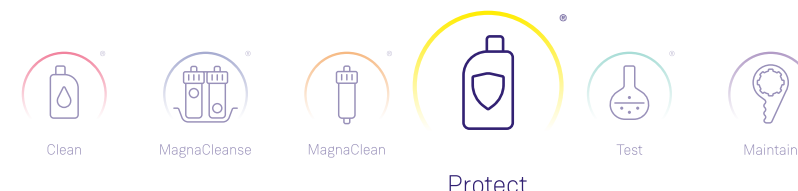


MC4TM MC4+TM *Rapide*

Central Heating System LEAK SEALER

MC4+ is an effective solution designed to seal small system leaks and weeping joints.

- High performance leak sealer
- Seals small inaccessible leaks and weeping joints
- Reduces pressure loss on sealed systems
- Avoids costly maintenance repairs
- Reduction in blocked pumps, valves or air vents
- Suitable for all heating systems
- The MC4 bottle can be dosed into the system through the *MagnaClean* filter
- MC4+ *Rapide* can be injected into the system via the radiator, air vent or boiler filling loop and can be completed in as little as 20 seconds
- MC4+ *Rapide* treats 125 litres which is up to 15 standard radiators, 25% more than other brands
- Available in 500ml bottle and 300ml *Rapide* canister



MC5™

Rapid Flush System CLEANER

MC5 RapidFlush System Cleaner is an advanced high strength cleaner developed specifically to work with ADEY's MagnaCleanse system and removes central heating system sludge, debris and scale.

MC5 starts to work as quickly as one hour after application. For maximum flexibility, it can be left in the system for up to 7 days.

- Advanced strength formula
- Recommended for use with MagnaCleanse and for other mechanically assisted cleaning processes
- Restores system efficiency
- Removes system sludge, debris and scale
- Suitable for all heating systems
- Part L Building Regulation compliant and compatible with BS7593
- The MC5 bottle can be dosed into the system through the MagnaClean filter
- Treats 100 litres which is up to 10 standard radiators
- Available in a 500ml bottle



MC10+™ MC10+™ Rapide

Underfloor and Central Heating System BIOCIDES

MC10+ is a concentrated, dual biocide formulated to prevent the formation and growth of bacterial contamination, algae and micro-organisms in underfloor and central heating systems.

- High performance dual biocide with two separate active ingredients making it more effective than a single biocide
- Prevents bacterial contamination and algae
- Designed for use with underfloor heating
- Compatible with all ADEY MC range products
- Ensures efficient system operation
- The MC10+ bottle can be dosed into the system through the MagnaClean filter
- MC10+ Rapide can be injected into the system via the radiator, air vent or boiler filling loop and can be completed in as little as 20 seconds
- Treats 125 litres which is up to 15 standard radiators or 100 m²
- Available in 500ml bottle and 300ml Rapide canister



MCZero™

Central Heating System ANTI-FREEZE

MCZero is a mono propylene based anti freeze solution designed to prevent freezing in all types of water. Also prevents metal corrosion and scale formation.

For the long-term protection of domestic central heating systems against freezing and the damaging effects of metallic corrosion of all metals and alloys found in heating systems including mild steel, copper and aluminium and their alloys.

- Prevents freezing
- Best in class formulation for mild steel protection to prevent magnetite generation
- Protects against corrosion and scale
- Increased strength high performance inhibitor
- Maintains heating efficiency
- Helps reduce heating costs and maintenance bills
- Suitable for all heating systems
- Compatible with all metals

Dosage guide:

Concentration	25%	30%	35%	40%
Protection	-11°C	-15°C	-18°C	-22°C



MCZero+™

Central Heating System INHIBITED ANTI-FREEZE

MCZERO+ is a concentrated monopropylene glycol solution designed to prevent freezing in all types of water. The formulation also contains inhibitor to protect against corrosion and scale formation and biocide to prevent bacterial contamination.

The high performance heat transfer fluid is specifically designed to protect low temperature heating and cooling systems, including Heat Pumps and underfloor heating.

- Prevents freezing
- Prevents corrosion, scale formation and microbial growth
- Best in class formulation for mild steel protection to prevent magnetite generation
- Protection at -3°C at a 10% concentration
- Compatible with all metals
- Buffered to maintain a neutral pH of system water
- Compatible with all ADEY chemicals
- The concentration of MCZERO+ can be adjusted for lower levels of freeze protection



Dosage guide:

Concentration	10%	15%	20%	25%	30%	35°C	40°C
Protection	-3°C	-5°C	-6°C	-9°C	-12°C	-15°C	-18°C



MC40+™

Central Heating System CLEANER and DESCALER

MC40+ is a fast-acting, citric-based acidic cleaner designed to dissolve limescale and dislodge hardened sludge deposits in heating systems.

MC40+ is a powder chemical which should be dissolved in warm water before addition to the system. It starts to work immediately and should be left in the system for no more than 4 hours. It is important that the chemical is neutralised, before draining down and flushing the system, to remove any remaining acid residues.

- Fast acting cleaner removes limescale, sludge and debris
- Contains a ph indicator which shows the acidity of the system water
- Turns yellow when the product has been neutralised or exhausted
- Free-flowing powder makes the product ideal for use with ADEY's *MagnaCleanse*
- Restores heating efficiency
- Helps reduce heating costs and maintenance bills
- Suitable for all heating systems
- Treats 125 litres



15



125 L



100m²

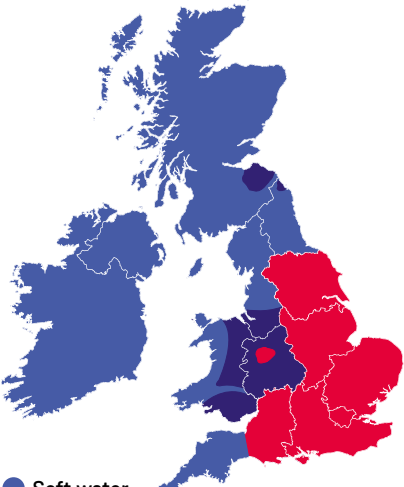
Scale reducers



Where mains water hardness levels go beyond 200 ppm, Part L of the Building Regulations states that provision must be made to treat the feed water to water heaters and hot water circuit of combination boilers to reduce the rate of limescale accumulation and the subsequent decline in energy efficiency.

ADEY scale reducers provide the ideal solution with *ElectroScale* and *MagnaScale*.

UK hard water map



- **Soft water**
less than 100 mg/l
- **Medium water**
100-200 mg/l
- **Hard water**
above 200 mg/l

ElectroScale™ Long-term limescale protection

- Immediate long-term limescale protection for homes and commercial properties
- No running costs and no mains power supply required
- Flexible installation fits both horizontal and vertical pipework
- Maintenance free
- Part L Building Regulation compliant

To achieve an effective level of protection, install ElectroScale on the incoming water supply after the water meter and primary filter units (if installed). This ensures that the whole property is protected.

MagnaScale™ Magnetic limescale prevention

- Immediate magnetic limescale prevention for individual appliances
- No running costs and no mains power supply required
- Flexible installation fits horizontal and vertical pipework
- Maintenance free
- Part L Building Regulation Compliant

To achieve an effective level of protection, install as close to the appliance as possible, without exceeding maximum operating temperature.





Water testing

Testing the quality of the central heating system water is an essential part of ADEY's Best practice process. ADEY's water testing delivers a fast, accurate and reliable service, providing an online facility which produces reports on water quality and an explanation of the likely causes of system problems. Recommendations are made using ADEY's Best Practice to restore the heating system to full efficiency.

The ADEY Water Test Kit comes complete with vials to collect the system and mains water samples, and a freepost envelope to send on to the UKAS accredited water testing laboratory.

UKAS accredited laboratory

ADEY's Water Testing Laboratory is the only laboratory within the HVAC industry to be UKAS accredited, delivering the most accurate and reliable results for the testing of both system and mains water. ADEY's water testing service conducts comprehensive tests on a broad range of parameters including determination of corrosion products, scale deposition, pH, chloride, conductivity and inhibitor levels.

The water test results are made available within 24 hours via a secure web portal followed by an email notification.



Protector level testing

ADEY's MC1+ Quick Test kit delivers fast and accurate on-site testing of the MC range inhibitor concentration in the central heating system.

After draining off some system water, the test strip only needs to be dipped in the solution for a second. Results are then revealed after just ten seconds.

MC1+ Quick Test Kits are suitable for testing the levels of MC1, MC1+ and MC1+ Rapide.



Test

ADEY Training Academy

Training and education of installers has been key in ensuring ADEY filters are fitted to over 70% of new boiler installations in the UK*. The ADEY training academy at the Head Office in Cheltenham is one of the 13 locations throughout the UK delivering course's on ADEY's award winning Best Practice.

ADEY Best Practice Training Course

The full-day training course covers all 6 steps of ADEY's Best Practice. This will include hands-on practical demonstrations using the chemical range, *MagnaCleanse* flushing process and installing *MagnaClean* filters. This is then followed by a detailed explanation of the ADEY Water Testing process, including analysis of the test reports.

Clean

The importance of the use of Cleaners will be explored including a demonstration on how ADEY's MC3+ and MC5 Cleaners are used. Delegates will be shown how these are introduced to a Central Heating System either by bottle or *Rapide*.

MagnaCleanse

The *MagnaCleanse* kit will be shown to attendees followed by an actual demonstration on how the kit is assembled and attached to the heating system prior to the *MagnaCleanse* process commencing. This will be followed by a 'live' demonstration of the full *MagnaCleanse* flushing process, allowing delegates to understand how the magnetite is removed from the system.

MagnaClean

Delegates will review the installation, servicing and unique design characteristics of the complete range of magnetic filters, from the super compact *MagnaClean* Atom to the only WI-FI enabled connected magnetic filter, the *MagnaClean Professional/3 Sense*. The trainer will demonstrate the filter capturing suspended magnetite and providing ongoing protection to the heating system.

Protect

Delegates will be shown how the use of ADEY MC1+ will ensure the ongoing protection of the system components by slowing down the corrosion rate.

Test

The trainer will demonstrate how to carry out a quick test and how to do a full water test by taking a sample of water from the system and sending it to ADEY's UKAS accredited laboratory for analysis. The resulting test reports will be explained and how these are used to make recommendations for restoring full heating system efficiency.

Maintain

It will be explained to the delegates the importance of continually maintaining the central heating system and that the introduction of a protector (MC1+) doesn't mean for life. Explanation will be given as to why a water test should be carried out annually to ensure there is sufficient protector in the system and re-dosing can be done where necessary.

Book your place now at adey.com/training.

Training Locations

ADEY's Best Practice course is held at the following locations throughout the UK.

ADEY Training Academy

UK Head Office
Gloucester Road, **Cheltenham** GL51 8NR

Alpha Heating Innovation

Nepicar House, London Road
Kent, TN15 7RS

Barkwell Plumbing & Heating

Barowe House, Beardown Road
Devon, EX20 1UA

Bedford College Gas Centre

Triumph Way
Bedford, MK42 7QB

Blackburn College Gas Centre

Saturn Centre, Challenge Way
Blackburn BB1 5QB

Chichester College

Westgate Fields
Chichester, PO19 1SB

Elements Training and Assessment

Stamermill Ind. Est, Unit 4 Timmis Road
Dudley, DY9 7BQ

Nationwide Training

Unit 2, Dunlop Square
Scotland, EH54 8SB

Norwich Gas Centre

49 Roundtree Way, Norfolk
Norwich, NR7 8SG

Octillion Training Academy

Unit 7, Swan Wharf
Uxbridge, UB8 2RA

Robinsons UK Training

Site 3 Coldhesledon Ind. Est., Seaham,
Co Durham SR7 8ST

Sterling Training & Assessment Services

17 Alexander Court, Earlstrees Ind. Est
Corby, NN17 4SW

Y.I.T.C

Unit 6, Lambourne Crescent
Cardiff, CF14 5GF

50five

Unit 3B, Broom Business Park
Chesterfield, S41 9QG

ADEY Training Map



Clean

MagnaCleanse

MagnaClean

Protect

Test

Maintain

* As found through independent research.

Notes

[illegible]

ADEY



KE KELIT®
CLIMATE CONTROL SYSTEMS

KE KELIT NZ Ltd.
0800 4 KE KELIT
0800 4 5353548
climatecontrol@kekelit.co.nz
www.kekelit.co.nz