

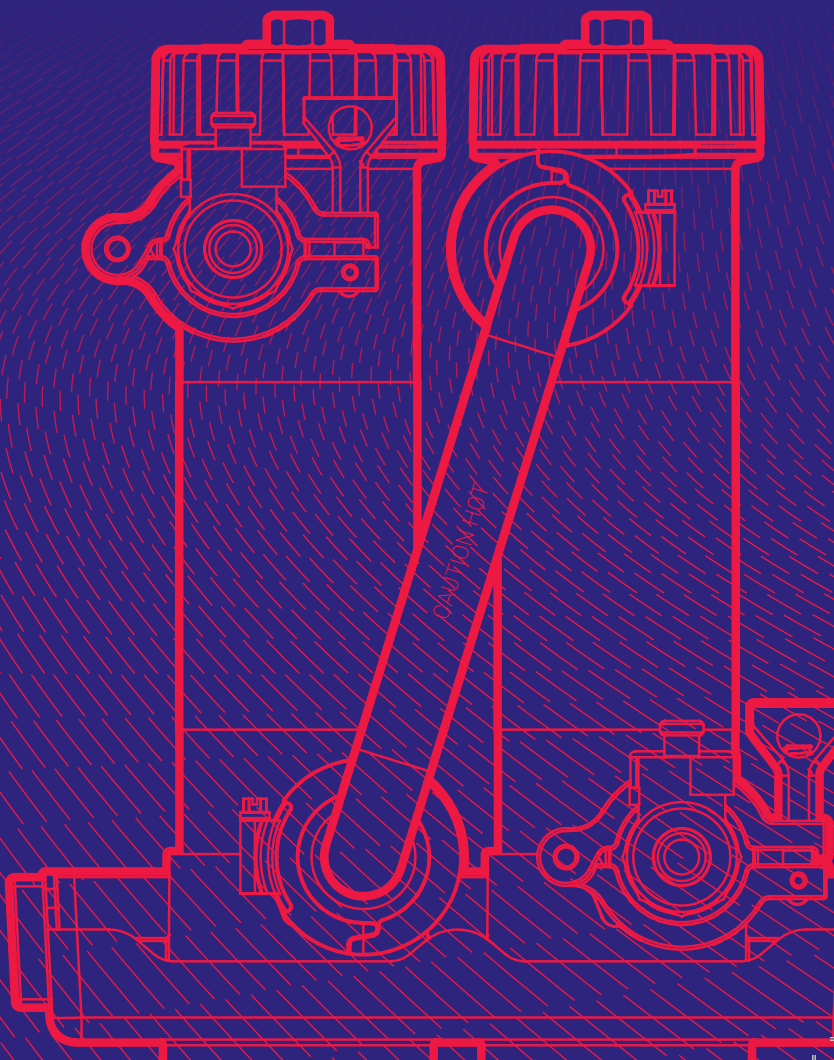
ADEY®



# MagnaCleanse®

Advanced Central Heating System Flushing

## User Guide for Combination and Sealed Systems



## Important

### CAUTION:



*MagnaCleanse RapidFlush*® filters contain a strong magnet. Keep away from all electrical devices, bank cards and other magnetic devices.



*MagnaCleanse RapidFlush* filters contain a strong magnet. Caution should be taken at all times when handling if you have a pacemaker fitted.



*MagnaCleanse RapidFlush* filters. Always release pressure before servicing.



*MagnaCleanse* system will be hot in operation. Handle with care.



A *MagnaCleanse RapidFlush* filter **MUST** be used when carrying out a system flush with a *MagnaCleanse*.



Installation of *MagnaClean*® filters and carrying out a system flush with a *MagnaCleanse* should only be undertaken by competent installers. If in any doubt consult a qualified heating engineer.



Monitor the *MagnaCleanse* system throughout operation.



Check jubilee clips are secure before and during operation

For the most up to date version of the *MagnaCleanse* User Guide visit [adey.com](http://adey.com). Warranty Terms & Conditions can be found at [adey.com](http://adey.com)



Clean



MagnaCleanse



MagnaClean



Protect



Test



Maintain

## Product Overview

*MagnaCleanse* delivers a fast and effective flushing process for central heating systems. The process involves ADEY's proven and award-winning *MagnaClean* technology.

### **MagnaCleanse system contents, including:**

- *MagnaCleanse RapidFlush* filter
- *VibraClean*® radiator agitator
- *MagnaCleanse* adaptor kit
- *MagnaCleanse* hose-to-valve connector
- Hose lengths (x2)
- Female camlocks (x2)
- Tri-clamps (x2)
- Drain valve

You will also need *MagnaClean* domestic filter

To achieve the best protection for the boiler, it is important that the flushing process is carried out with the *MagnaCleanse* hose-to-valve connector attached to the return pipe of the system.

For maximum effect it is recommended that cleaner is added:

*MC3+*® - Leave for up to 25 days.

*MC5*® - Leave for up to 7 days.

The following instructions are designed to assist engineers in the safe and effective operation of the *MagnaCleanse* process.

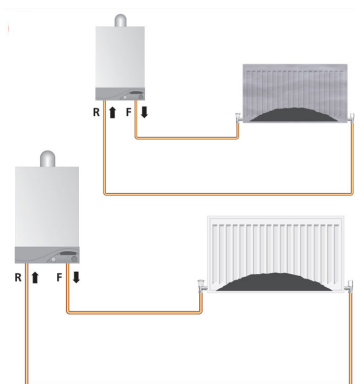
These instructions are for combination/closed heating systems. If the system is an open vented system, please refer to the *MagnaCleanse* User Guide for Open Vented systems.



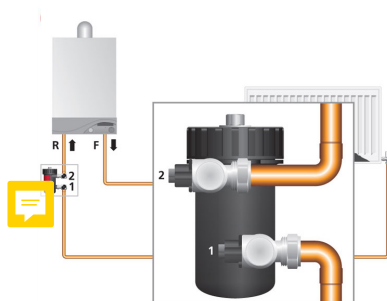
## Step-by-step

Removal of black iron oxide and non-magnetic material for combination/sealed systems

- 1 Complete all relevant preliminary electrical safety checks to boiler and pipework to confirm safe isolation and earth path.



- 2 Isolate central heating system and drain.



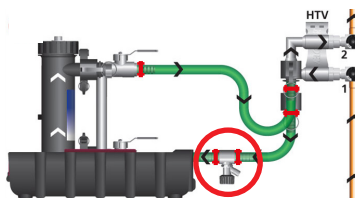
- 3 If a *MagnaClean* filter is installed, remove the filter.

Attach the *MagnaClean* hoses between the *RapidFlush* Filter and the *MagnaClean* HTV connector.

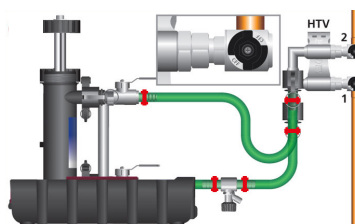
Attach *MagnaClean* HTV connector to the isolation valve on the pipework, using the appropriate adaptor.

Ensure drain valve is in lower hose.

**N.B. The flow through *MagnaClean* *RapidFlush* filter should enter the bottom right and exit top left.**



- 4 Turn OFF isolation valves on the *RapidFlush* filter. Loosen and remove the lid assembly from one of the *RapidFlush* filter canisters.



Check jubilee clips are secure before and during operation.

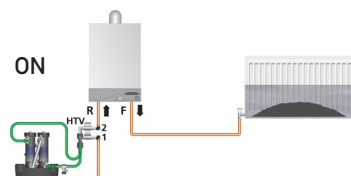
## Step-by-step

- 5** Add a suitable cleaner, such as *MC5*®, to the system via the *RapidFlush* Filter canisters.

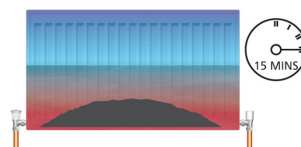
If this has already been added, skip this step.



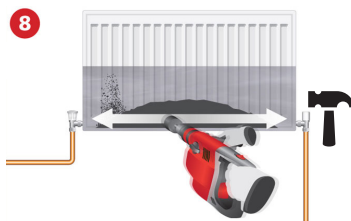
- 6** Turn ON isolation valves on the *RapidFlush* Filter. Re-fill and pressurise the central heating system ensuring the radiators are half-full. Check for leaks.



- 7** Turn on central heating system (all radiators open) for 15 minutes. The radiators should be hot at the bottom, cold at the top.



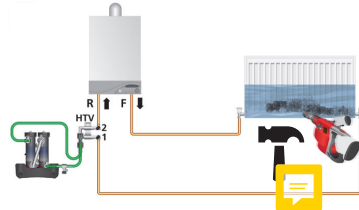
- 8** Turn off any bypass valves and all the radiators, ensuring they are FULLY closed. Leave the furthest radiator open. With the system running, use ADEY *Vibraclean* tool attached to an SDS drill, set to hammer only mode with no rotary action, agitate open radiator for 15-20 seconds, along the bottom of the radiator. Repeat process on each radiator, moving from furthest away radiator to radiator closest to the boiler.



*Remember to monitor the MagnaCleanse throughout operation.*

## Step-by-step

- 9 Continue the *VibraClean* radiator agitation to dislodge any sludge deposits until the return hose to the *RapidFlush* filter runs clear.

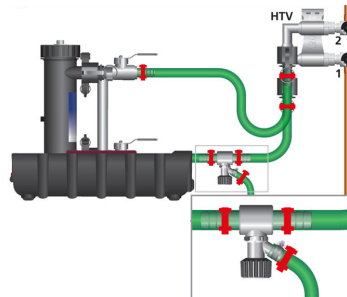


- 10 Isolate and clean the *RapidFlush* filter as required. Using Personal Protective Equipment i.e. gloves and paper towels, wipe off any magnetite into a bucket. Waste should be bagged and thrown away. When satisfied, open up the next radiator, turn off the treated radiator and repeat the process until all radiators are clean.

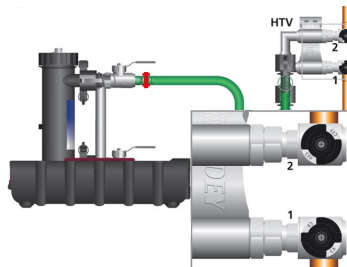


Sludge removal tool available at [adeyspares.co.uk](http://adeyspares.co.uk).

- 11 Set the boiler control to OFF. Attach a drain hose to the *MagnaCleanse* drain valve and secure with jubilee clip.

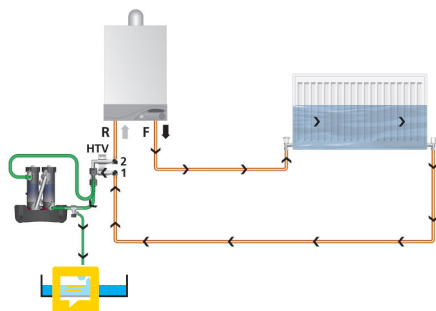


- 12 Turn OFF the HTV connector isolation valve 2 on the return pipe to the boiler, leaving the HTV isolation valve 1 open.



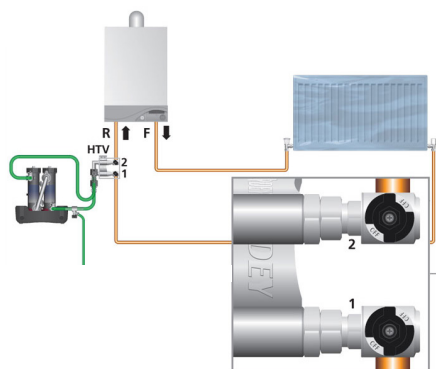
Check jubilee clips are secure before and during operation.

- 13** Check that all radiators and bypasses are turned OFF, leaving the furthest radiator from the boiler open. Turn on the filling loop and allow the mains water to flush through the system. Allow the water to drain out to a convenient point outside until clear. When complete, fill and vent the radiator and allow to circulate. Always open up the cleansed radiator before turning off the cleared radiator. Repeat this process on each radiator until system flushing is complete.



- 14** Turn off the filling loop and HTV connector isolation valve 1, drain and remove *MagnaCleanse* assembly. All the radiators should now be full. Reinstall/Install the *MagnaClean* filter to system.

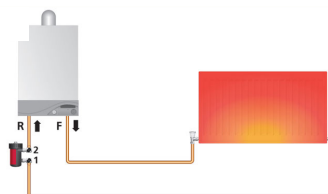
**N.B Refer to MagnaClean installation instructions.**



- 15** Add a suitable inhibitor, such as *MC1+*®, into the canister. i.e. use the pro-fill bleed valve or remove canister lid assembly and dose filter. Open up the isolation valves and remove any air by venting using filter air vent.



- 16** Turn on the central heating system and re-set controls to the customer requirements. Open any bypass valves previously closed. Commission the system following the manufacturer's instructions. Before leaving the property, carry out the final job – service *MagnaClean* filter ensuring a final check is carried out for leaks.



**Remember to monitor the MagnaCleanse throughout operation.**



KE KELIT NZ Ltd.  
0800 4 KE KELIT  
0800 4 5353548  
climatecontrol@kekelit.co.nz  
www.kekelit.co.nz



adey.com

For the most up-to-date version of installation and serving instructions visit [www.adey.com](http://www.adey.com)

All ADEY marks are trademarks of Adey Holdings (2008) Limited. Please visit [adey.com/trademarks](http://adey.com/trademarks) for a list of ADEY marks.  
Copyright Adey Holdings (2008) Limited © 2019. All rights reserved.

M01924 LF2-01-03189 v1