

# BROEN

VALVE TECHNOLOGIES



2018 | All rights reserved



# Ballofix® with handle - GAS

Ballofix® Gas straight w handle Male x Female

## Applications

Natural gas

## Approvals

DG

## Product information

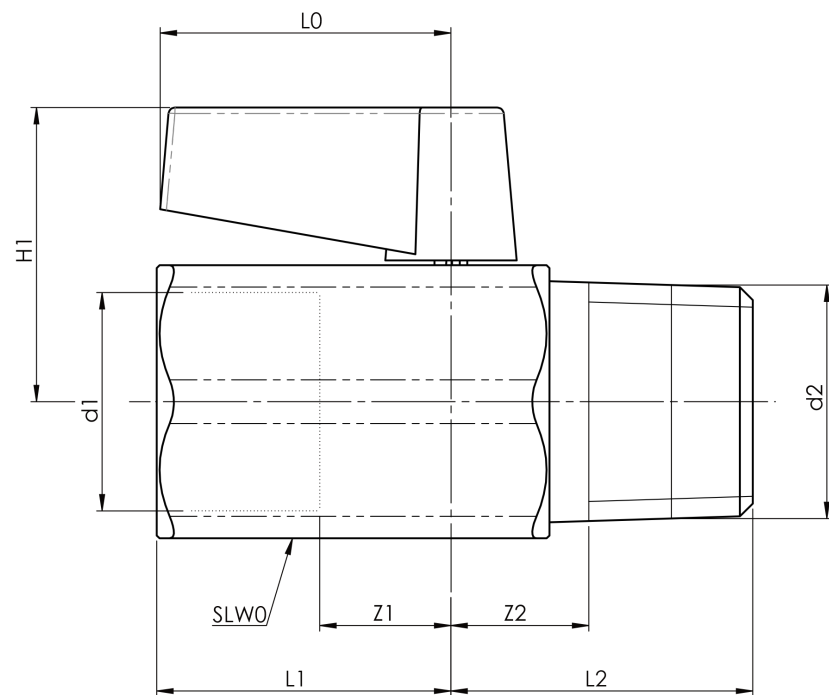
### Assortment

Description	3/4 × 3/4
Internal diameter connection 1	DN20
Internal diameter connection 2	DN20
Art. no.	34502GU-601002
Description	Ballofix® with handle - GAS
Connection 1	M - female thread metric
Connection 2	M - Male thread metric
Connection 3	
Retail no	34502GU-601002

### Characteristics

Manufacturer	BROEN
Material	Brass
Finishing	Powder
Finish	
Shape	
Intrastat no.	84818019
Weight	0.247 KGM
GTIN	05708537069433
Sealing	
Max temperature	
Maximum Operating Pressure Liquid	0
Class feature class code	

# Dimensions



Series	BALLOFIX VALVES
Type	BALLOFIX Gas Ball valve
Art. no.	
L0	37.3
Slv0	32
Slv1	
slv2	
L1	31.4
L2	31.6
L3	31.6
H1	36.0
H2	
Z1	15.3
Z2	15.3

**BROEN VALVE TECHNOLOGIES**

For more than 70 years BROEN has been the global leader in the development and production of valve technology for the control of water, air, gas and oil. BROEN delivers complete solutions for HVAC building installations and is a leading supplier of district energy valves.

We know application and valve technology in depth and in close dialogue with our customers and partners all over the world we create value and reliability with proven valves offering full quality assurance.

BROEN Group – part of Aalberts Industries – is headquartered in Assens, Denmark.

**BROEN Group locations**

Headquarters in Assens, DK

**Sales- and productions sites ●**

BROEN A/S, Assens (DK)

BROEN SA, Dzierżonów (PL)

BROEN LLC, Kolomna (RU)

BROEN INC., Houston (US)

BROEN OIL & GAS, Suchy Las & Rogoźno (PL)

Clorius Controls, Dzierżonów (PL)

**Sales companies and offices ○**

BROEN, Assens

BROEN, Stockholm

BROEN, Helsinki

BROEN SEI, Romania

BROEN, Beijing

BROEN, Singapore

BROEN, Dusseldorf

BROEN, Moscow

Clorius Controls, Copenhagen

Clorius Controls, Shanghai

**BROEN A/S**