



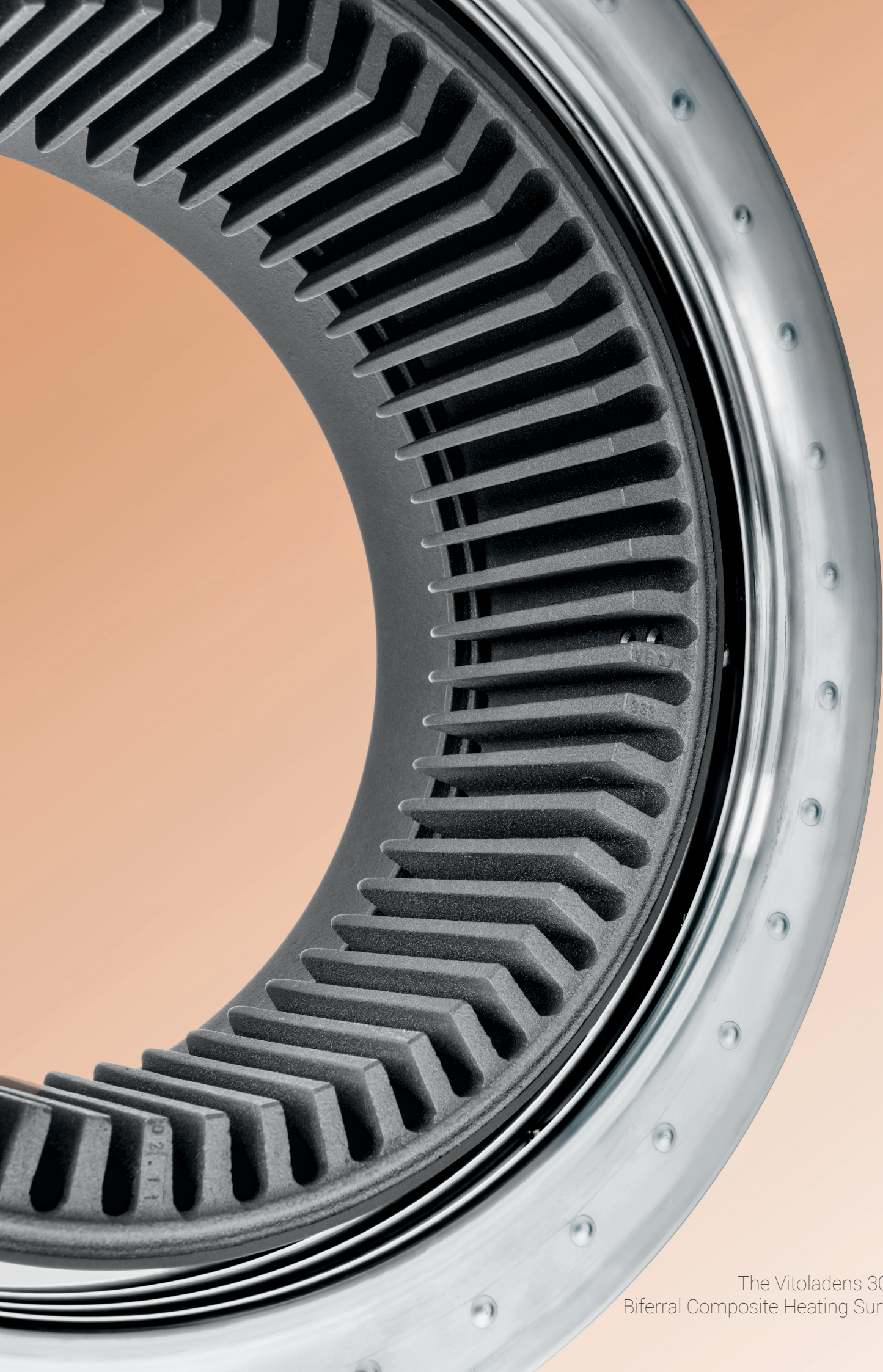
## Diesel Boilers & Radiator Heating

**VIESSMANN**



**VOGEL&NOOT**





The Vitoladens 300-C  
Biferral Composite Heating Surface



# CONTENTS

<b>Viessmann Condensing Diesel Boilers</b>	<b>4</b>
Vitorondens 200-T Diesel Boiler	11
Vitoladens 300-C Diesel Boiler	13
<b>Vogel &amp; Noot Radiators</b>	<b>14</b>
T6 Centrally Connected Radiator	19
<b>Vogel &amp; Noot Towel Warmers</b>	<b>21</b>
DION-VM Towel Warmer	21
AVONMORE Towel Warmer	23



# Simple, Economical

# Clean, Durable





While reticulated gas is not available at all New Zealand homes, Viessmann's diesel boilers are an extremely popular alternative for efficient and comfortable home heating.

Converting fuel oil into heat, diesel condensing boilers are highly efficient. They extract nearly all of the heat contained in the flue gases, turning this into additional heating energy and therefore minimising waste. In fact, Viessmann diesel condensing boilers have an unbeaten high efficiency of 98 percent. So, using one of these appliances will help you to save energy and reduce your carbon footprint.

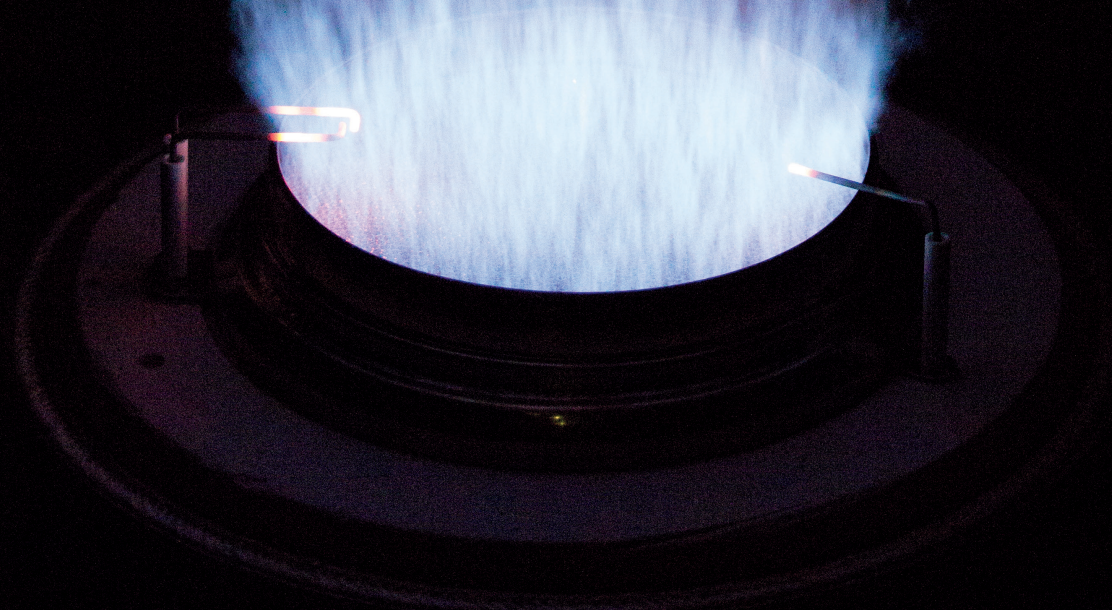




Environmentally Responsible,

Energy Efficient.

Viessmann Sets the Standard.





## **Viessmann has regularly set new milestones in the development of advanced heating technology throughout its 100 year history**

Viessmann has been a pacemaker in the heating technology industry for decades. Ongoing innovation has raised the efficiency in converting energy into heat to the limits of that which is currently technically possible.

At the same time, it has been possible to drastically reduce the energy consumption levels and CO<sub>2</sub> emissions of all boilers

### **The Biferral Composite Heating Surface**

The invention of the duplex biferral composite heating surface in the 1970s was a quantum leap for energy efficient heating. Even today it is synonymous with high operational reliability and long service life.

This heating surface is an important component of the successful Vitoladens 300-C diesel boiler, and has been installed in around two million Viessmann boilers worldwide.

### **Stainless Steel Inox-Radial Heat Exchanger**

All Viessmann condensing diesel boilers are equipped with the stainless steel Inox-Radial heat exchanger. This indestructible technology brings with it high efficiency of 98 percent, plus safe and efficient operation during its long service life. Condensing diesel boilers are already designed to meet future standards, as they can be fired with different types of fuel oil and partial mixtures of bio-oil.

Viessmann guarantees Inox-Radial heat exchangers up to 150 kW with a ten year warranty against leaks resulting from corrosion.

### **Award-Winning Design**

For Viessmann, top technology and an attractive design go hand in hand. In recent years, the company has received more than 40 significant design awards from all over the world for its products. Viessmann boilers have won the renowned red dot design award **twenty times**.







## Weather Compensation with Gas Boilers

### How does weather compensation work?

A small temperature sensor is located on the outside of the building, on a south facing wall (coldest side of the house). This is wired to the internal controls of the heat source and information about the outside temperature is sent to the heat source controller constantly.

When the temperature changes outside the heat source responds and starts to increase or decrease the heating water temperature to compensate. This pro-active mechanism means that people inside the building won't even notice that the temperature has changed outside.

For example, when the outside temperature drops at night, more heat is lost through the walls of the building. Because the outdoor sensor detects the fall as soon as it happens, the heat source is able to raise the heating water temperature and keep the inside temperature stable. With a conventional system, the temperature is dependent on a room thermostat, which will only take effect after the inside of the building has become too hot or too cold.

In summary, weather compensation controls enable the heat source to respond to outside temperature changes and adjust the radiator and/or central heating output to use only the energy required. This ensures a constant temperature is maintained indoors.

### What does weather compensation mean to the householder?

**Lower fuel bills** - save up to 15% of your annual fuel bill - that's on top of the savings you'll make by changing a conventional boiler for a high efficiency condensing boiler.

**A comfortable home** - a constant temperature is maintained inside, despite the changing weather.

**You won't even notice the changes** - with central heating you won't notice the weather compensation control working, you will simply feel a very consistent and comfortable room temperature. If radiators are incorporated into your central heating system, you may notice changes to your radiator temperature automatically changing as the outside temperature increases and decreases to maintain the desired room temperature.

With weather compensation the boiler should fire so infrequently that for the first few months you'll probably keep checking it's still on!

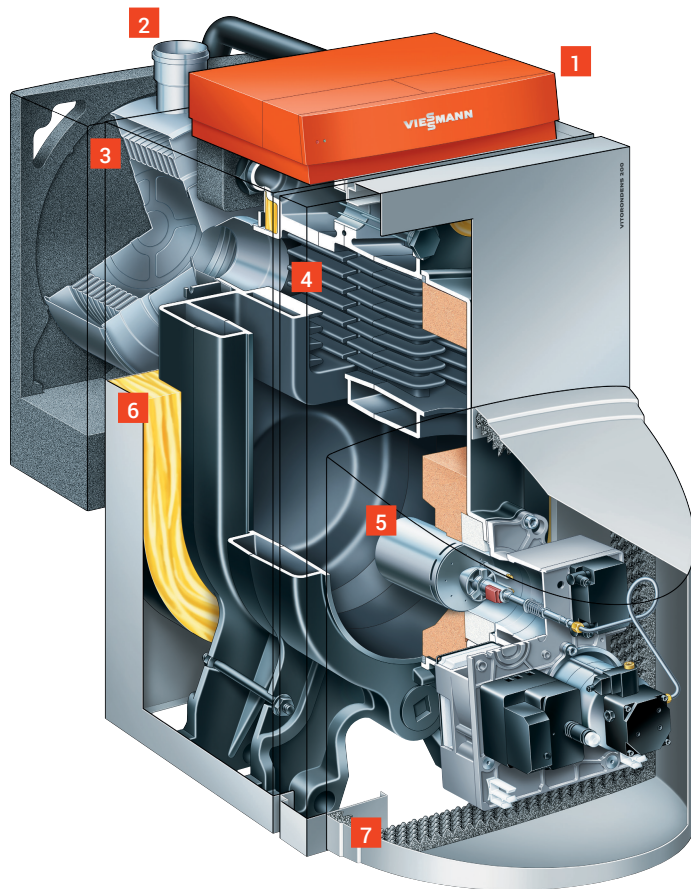




# VITORONDENS 200-T

## Floor-Standing Condensing Diesel Boiler

Efficient, compact, quiet and affordable, the Vitorondens 200-T is a floor-standing cast iron oil condensing boiler with an attractive price/performance ratio. Their dimensions are impressively compact and they are particularly suitable for modernisation projects. The Vitorondens 200-T comes fitted with a Vitoflame 300 blue flame burner which offers particularly clean, environmentally responsible and efficient combustion.



### 10 Year Warranty

On all Stainless Steel Heat Exchangers for  
Condensing Diesel Boilers up to 150 kW

- 1** Vitotronic Control Unit
- 2** Flue Outlet
- 3** Inox-Radial Heat Exchanger
- 4** Eutectoplex Heating Surface
- 5** Vitoflame 300 Blue Flame Diesel Burner
- 6** Thermal Insulation
- 7** Sound Insulation

### Benefits at a Glance:

- Affordable cast iron diesel condensing boilers which are ideal for modernisation projects
- Proven components for high operational reliability and a long service life
- Available in outputs from 20 to 53kW
- Downstream stainless steel Inox-Radial heat exchanger that cleans itself
- Easy-to-operate Vitotronic control unit with plain text and graphic display
- Quiet operation through external flue gas silencer option
- 5 year standard warranty for the boiler. 10 year warranty for the heat exchanger



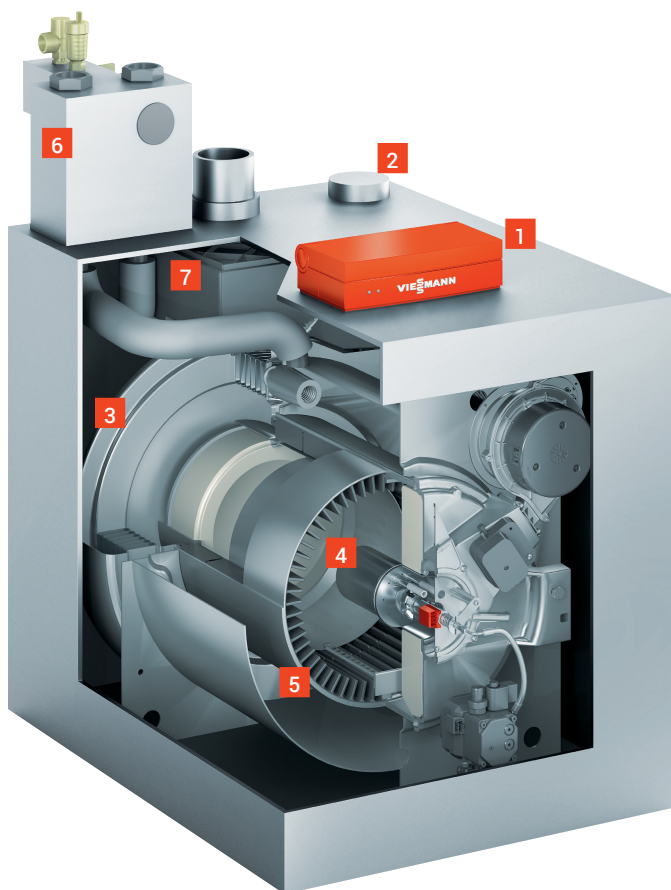


# VITOLADENS 300-C

## Floor-Standing Condensing Diesel Boiler

The Vitoladens 300-C is an unbeatable boiler when it comes to modernising an older heating system. This boiler is amongst the most popular Viessmann products in Germany due to its combination of high levels of efficiency with a stylishly compact and appealing design. The biferral composite heating surface and downstream Inox-Radial heat exchanger play a major role in ensuring that the energy used is converted into heat with virtually no losses and efficiency of up to 98 percent.

**Please Note:** This boiler is available on indent only. Please contact KE KELIT Climate Control for more information [climatecontrol@kekelit.co.nz](mailto:climatecontrol@kekelit.co.nz)



## 10 Year Warranty

On all Stainless Steel Heat Exchangers for  
Condensing Diesel Boilers up to 150 kW

- 1 Vitotronic Control Unit
- 2 Flue Outlet
- 3 Inox-Radial Heat Exchanger
- 4 Compact Blue Flame Burner
- 5 Biferral Composite Heating Surface
- 6 Safety Assembly
- 7 Integral Silencer

### Benefits at a Glance:

- Maximum energy utilisation with minimum dimensions
- Biferral composite heating surface with directly connected stainless steel Inox-Radial heat exchanger
- Two-stage or modulating compact blue flame burner for open flue or room sealed operation
- Quiet operation thanks to the integral silencer
- Safety assembly included in standard delivery
- Available in outputs from 10.3kW to 28.9kW (modulating)
- 5 year standard warranty for the boiler. 10 year warranty for the heat exchanger

# Superior Design, Superior Efficiency.





Perfectly suited for New Zealand's unpredictable weather, radiators provide high performance, rapid heat-up times and healthy, radiant heat without forcing dust allergens around your home. KE KELIT Climate Control offer a diverse and stylish range of radiators and heated towel rails from European supplier Vogel & Noot.

Radiator central heating is a fast and efficient way to heat your home. Radiators give you complete control over the temperature in each individual room. They heat from a lower level, so objects around them feel the warmth quickly through natural convection. Radiators are perfectly safe for children, elderly and pets and pose no risk to any furniture in close proximity.









## **Natural & Comfortable Warmth**

The main advantage of central heating with radiators is its high level of performance. Radiant heat means that the warmth is concentrated where you need it most. Radiant heat heats up the room, furniture and people in it, which creates a more comfortable and natural warmth, similar to the rays of the sun.

It's a highly controllable heat too. You can make each room a separate zone, varying heat output according to the time of day and location. You'll enjoy radiant heat even in the largest rooms, with no cold spots and no draughts caused by air circulation. It's even good for furniture, with its gentler, more even heat and smaller variations in humidity.

## **More Benefits, More Savings**

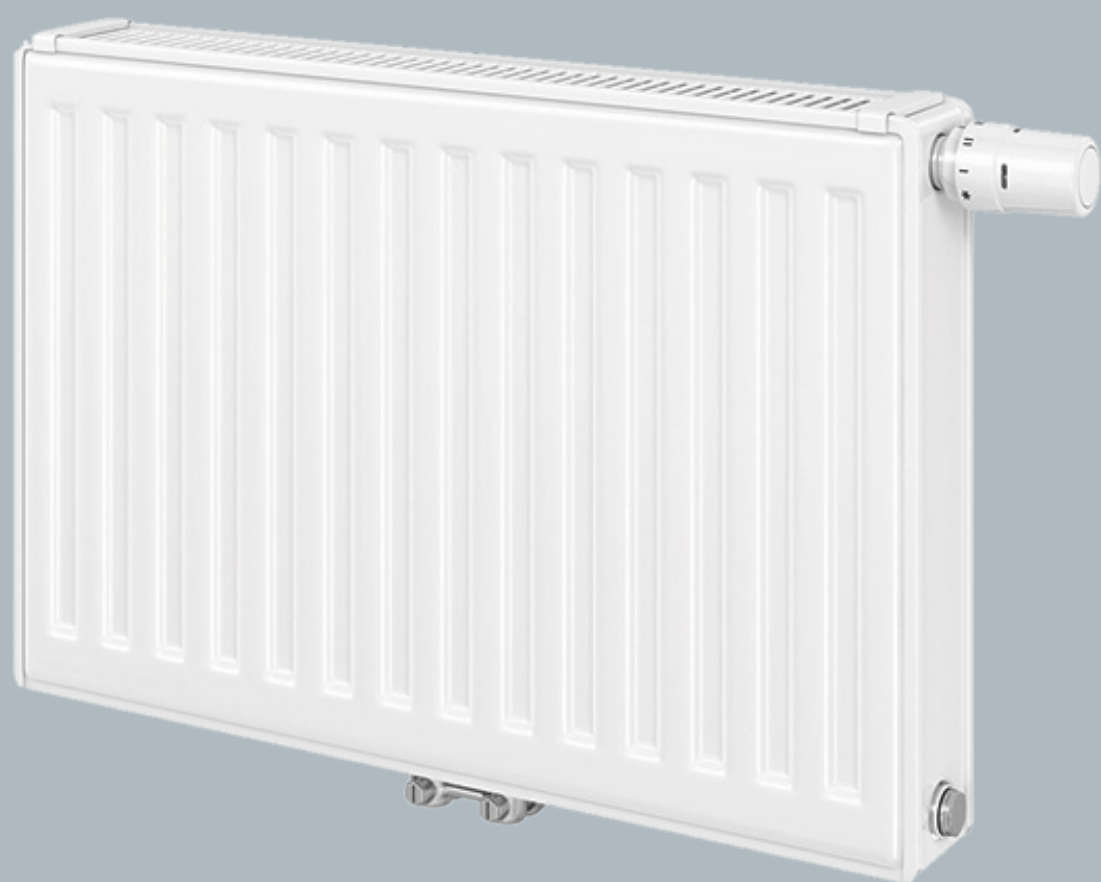
At KE KELIT Climate Control we act according to our values, are responsible to our clients and strive to protect our environment. The use of high-efficiency heat sources and weather compensation controls in conjunction with radiators will save our clients significant amounts of money over the life cycle of the system and reduce CO<sub>2</sub> emissions by meaningful amounts.

KE KELIT Climate Control has only two rules that are not flexible when designing a central heating system;

- All heat sources must be high efficiency and;
- Every system design must have a weather compensating control system.

These two rules are mandatory in countries like Germany; however, in New Zealand the option for inefficient heat sources and control systems are still allowed.

The small increase in investment is quickly returned by significant energy savings of up to 35%, and once this investment is returned you will experience efficient operation of your central heating system for years to come.





# VOGEL & NOOT T6

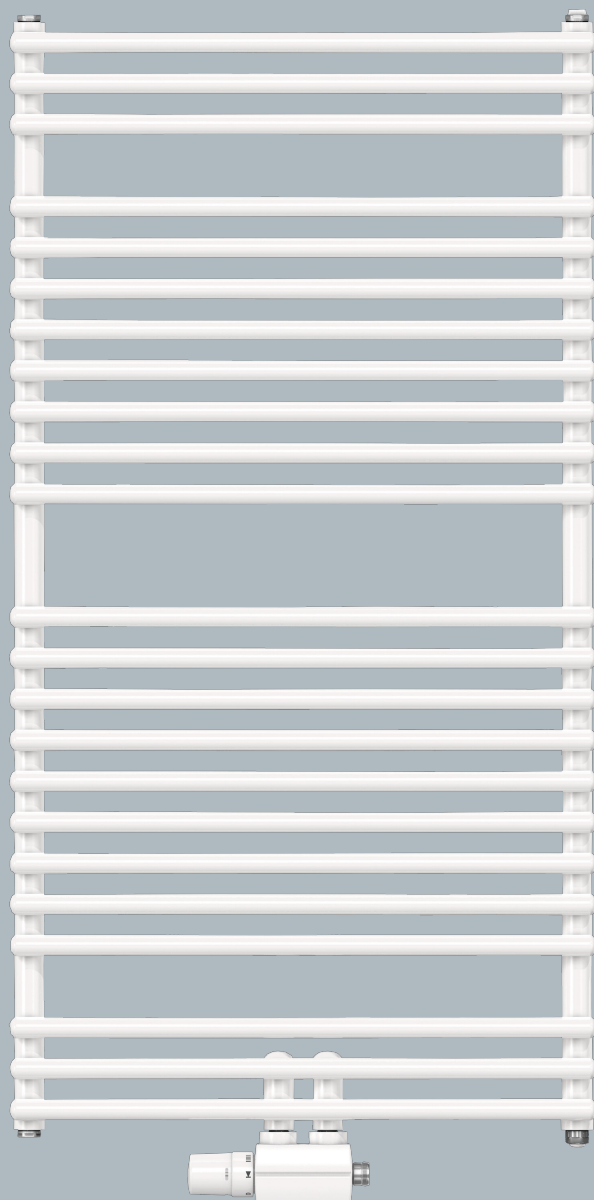
## Centrally Connected Panel Radiator

As a long-standing top seller, the T6 defines the high standards of energy-efficient residential building. Due to its central connection position, it stands out for its remarkable flexibility in installation and planning. It comes with a removable top cover, closed lateral ports and special air-bleeding plugs. The T6 is a highly efficient high temperature radiator with a maximum operating temperature of 110°C.



### Benefits at a Glance:

- Available in 4 models in over 200 sizes
- 71 different colours available (on indent)
- Thermostatic valve can be switched from either side of the radiator, with no need to turn the radiator and without crossing over the supply and return.
- Compared to sectional radiators, the T6 offers average energy savings of 15%





# VOGEL & NOOT DION-VM

## Centrally Connected Towel Warmer

An eye-catching, elegant design that brings comfort into your bathroom. The discreet horizontal heating pipes are ideal for hanging and drying hand towels and bath towels.



### Benefits at a Glance:

- Available in white
- 12 different sizes available
- Provides additional storage space in your bathroom due to the amount of towels it can hold





# MYSON AVONMORE

## Side Connected Towel Warmer

An elegant, multi-rail design that brings style and comforting warmth into your bathroom. The curved horizontal heating pipes are ideal for hanging and drying towels



### Benefits at a Glance:

- Available in chrome
- 12 different sizes available
- Available in curved or straight (on indent) models



---

**KE KELIT NZ Ltd**

12 Gregory Street

Naenae, Lower Hutt 5011

**PHONE** +64 4 5684870

**EMAIL** [climatecontrol@kekelit.co.nz](mailto:climatecontrol@kekelit.co.nz)

**WEB** [www.kekelit.co.nz](http://www.kekelit.co.nz)