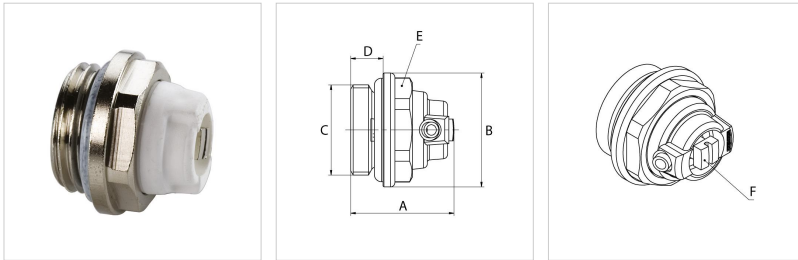


Product Data Sheet

STANDARD C Air Plug with Swivelling Outlet

Radiator plug with O-ring seal.



Type	Version	Connection (C)	Dimensions [mm]					###	Article no.
			A	B	D	E (WS)	F (WS)		
LS-C - 3/8	brass head	G $\frac{3}{8}$ " M	24	21	7.0	19	5	10/100	F10713
LS-C - 1/2	plastic head	G $\frac{1}{2}$ " M	25	26	7.4	22	5	10/100	F10714

Technical information

- Components made of nickel-plated brass and plastic
- Sealing materials: EPDM
- Max. operating temperature: 110 °C permanent temperature, 130 °C short-term
- Max. operating pressure: 10 bar

Find more information online:

[Extra documentation](#)

Simplex Armaturen & Systeme GmbH
Isnyer Straße 28
88260, Argenbühl - Eisenharz - de
+ 49 75 66 94 08-0
info@simplex-armaturen.de
www.simplex-armaturen.de