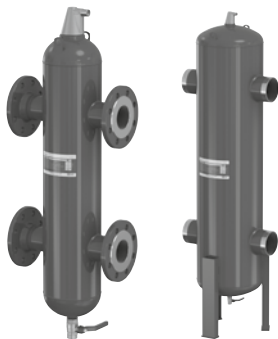




Flamco



FlexBalance® (Plus)

ENG

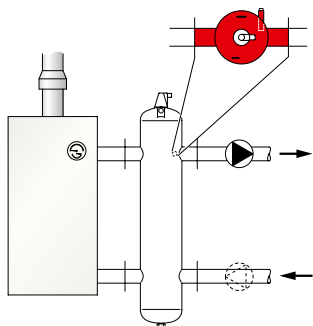
Installation and operating instuction



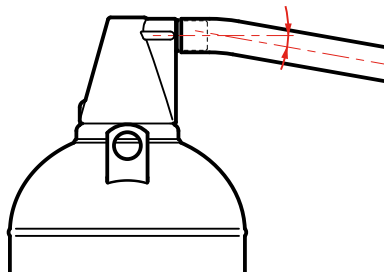


Flamco

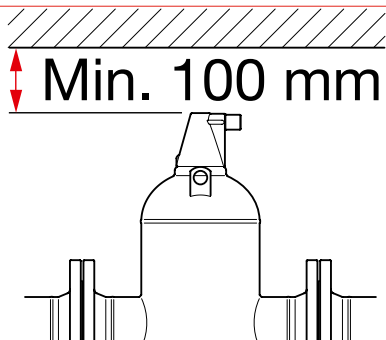
1



2



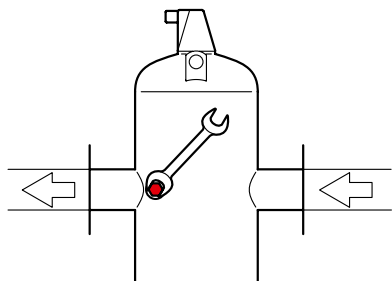
3



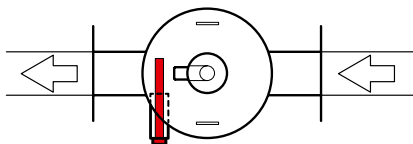
4

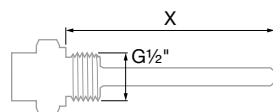
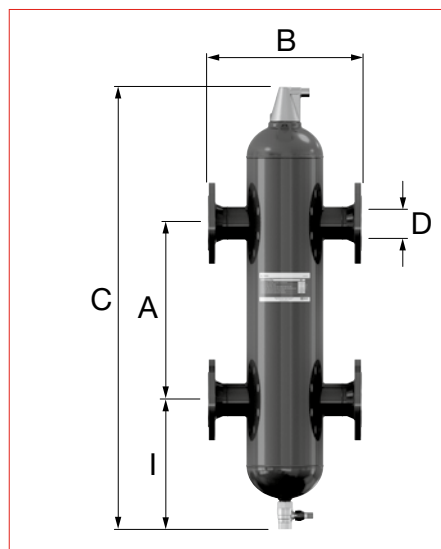


5



6





		[mm]				[Ø]	[mm]			
		A	B				C	E	F	X
			Type F	Type S	Type R					
FlexBalance	DN 50	490	350	260	260	900	60,3	88	154	150
FlexBalance	DN 65	635	350	260	260	1045	76,1	88	154	150
FlexBalance	DN 80	745	470	370	370	1340	88,9	135	188	200
FlexBalance	DN 100	965	470	366	366	1585	114,3	135	188	200
FlexBalance	DN 125	1180	635	525	525	2065	139,7	180	213	250
FlexBalance	DN 150	1430	774	664	664	2385	168,3	225	237	250
FlexBalance	DN 200	1860	1000	876	876	3155	219,1	300	277	250
FlexBalance	DN 250	2340	1220	1080	-	3940	273	400	325	300
FlexBalance	DN 300	2790	1220	1064	-	4390	323,9	400	369	400
FlexBalance	DN 350	3060	1580	1416	-	5160	355,6	500	398	400
FlexBalance	DN 400	3500	1870	1700	-	5915	406,4	600	432	400
FlexBalance PLUS	DN 50	400	350	260	260	960	60,3	88	154	150
FlexBalance PLUS	DN 65	400	350	260	260	960	76,1	88	154	150
FlexBalance PLUS	DN 80	625	470	370	370	1390	88,9	135	188	200
FlexBalance PLUS	DN 100	625	470	366	366	1390	114,3	135	188	200
FlexBalance PLUS	DN 125	830	635	525	525	2015	139,7	180	213	250
FlexBalance PLUS	DN 150	1040	774	664	664	2345	168,3	225	237	250
FlexBalance PLUS	DN 200	1400	1000	876	876	3145	219,1	300	277	250
FlexBalance PLUS	DN 250	1850	1220	1080	-	4000	273	400	325	300
FlexBalance PLUS	DN 300	1850	1220	1064	-	4000	323,9	400	369	400
FlexBalance PLUS	DN 350	2325	1580	1416	-	5170	355,6	500	398	400
FlexBalance PLUS	DN 400	2700	1870	1700	-	5965	406,4	600	432	400



1. General

The FlexBalance (Plus) allows hydraulic separation between the primary and secondary circuits of commercial heating systems and is supplied complete with an automatic vent. The FlexBalance Plus can also act as an air and dirt separator.

FlexBalance (Plus) |10 bar is in accordance with the Pressure Equipment Directive 2014/68/EU. A declaration of conformity is available from Flamco on request.
Or see www.flamcogroup.com --> Support --> Certificates.

The FlexBalance (Plus) is suitable for heating and cooling systems that use anti-freeze with a glycol content of up to 50%.

The FlexBalance (Plus) can be fitted with an immersion pipe with temperature sensor.

Minimum and maximum system temperature:

-10 °C - see label.

Maximum system pressure:

10 bar.



Safety requirements

Installation and maintenance must be carried out by qualified personnel.

Observe local regulations and guidelines.

2. Installation



Flush the installation thoroughly installing the FlexBalance (Plus).

Install the FlexBalance (Plus) in a dry location not susceptible to frost and which is easily accessible for maintenance purposes.

The FlexBalance (Plus) should be connected vertically to the flow and return circuit as close to the boiler as possible (**fig. 1**).

Note: the sensor connection must be located at the outlet side to the installation (the second circuit) (**fig. 1**).

For maximum efficiency the flow rate in the flow pipe should be approx. 1 m/s (maximum 2 m/s).

The valve end of the air vent has an external measurement of 22 mm allowing it to be easily attached to the air venting pipe which should slope downwards (**fig. 2**).

For ease of maintenance there must be a clearance (**fig. 3**) of at least 100 mm above the air vent.

Before using the temperature sensor, remove the plug from the sensor connection and install an immersion pipe with a G½" connection. See the table for the correct immersion pipe length (**X**) (**fig. 5, 6**).

3. Inspection and maintenance

Perform regular inspections.

To remove the silt that collects inside the FlexBalance Plus use the drain tap (only for FlexBalance Plus).

To flush the FlexBalance (Plus) properly it is recommended to place the product between stop valves. In the unlikely event of contamination or leakage from the air vent this valve can be closed by turning the integrated screw (**fig. 4**).

4. Removal

Depressurise the system and remove the FlexBalance (Plus).

Observe local regulations for disposing of the FlexBalance (Plus).





Flamco



KE KELIT®
CLIMATE CONTROL SYSTEMS

KE KELIT NZ Ltd.
0800 4 KE KELIT
0800 4 5353548
climatecontrol@kekelit.co.nz
www.kekelit.co.nz

Copyright Flamco B.V., Bunschoten, the Netherlands.

No part of this publication may be reproduced or published in any way without explicit permission and mention of the source.

The data listed are solely applicable to Flamco products.

Flamco B.V. shall accept no liability whatsoever for incorrect use, application or interpretation of the technical information.

Flamco B.V. reserves the right to make technical alterations.